



Percy Mews, W1T

£800 Per week

Dexters



Percy Mews, W1T

A two double bedroom apartment situated in a modern building at the end of a quiet Central London mews.

The ground floor accommodation comprises two double bedrooms, a large reception room with adequate space to dine and also work from home, separate modern galley kitchen and a bathroom. There are also two large storage cupboards within the property.

Moments from the world famous Oxford Street with the bright lights of Soho and Marylebone nearby.

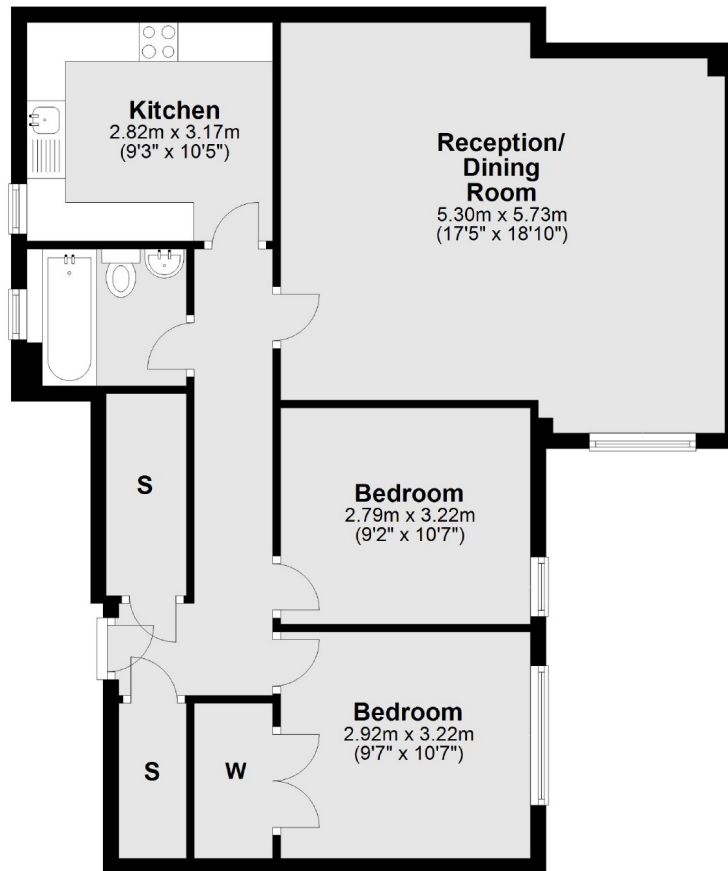
Features

- Two Double Bedrooms
- Reception
- Separate Kitchen
- Bathroom
- Mews Location
- Ground Floor



Percy Mews, London, W1T

Ground Floor



Total area: approx. 75.3 sq. metres (810.8 sq. feet)