



Market Place, W1W

£1,595 Per week

Dexters



Market Place, W1W

A unique and exceptionally spacious two bedroom apartment on the fifth floor of this landmark art-deco building.

This modern and stylish apartment benefits a principal bedroom with en suite bathroom, second double bedroom, bathroom, open plan living and space with dining area and fully fitted kitchen. The property also benefits from a balcony.

Market Place is conveniently located directly behind Oxford Street and near the junction of Regent Street and Oxford Circus is just a few yards away.

Features

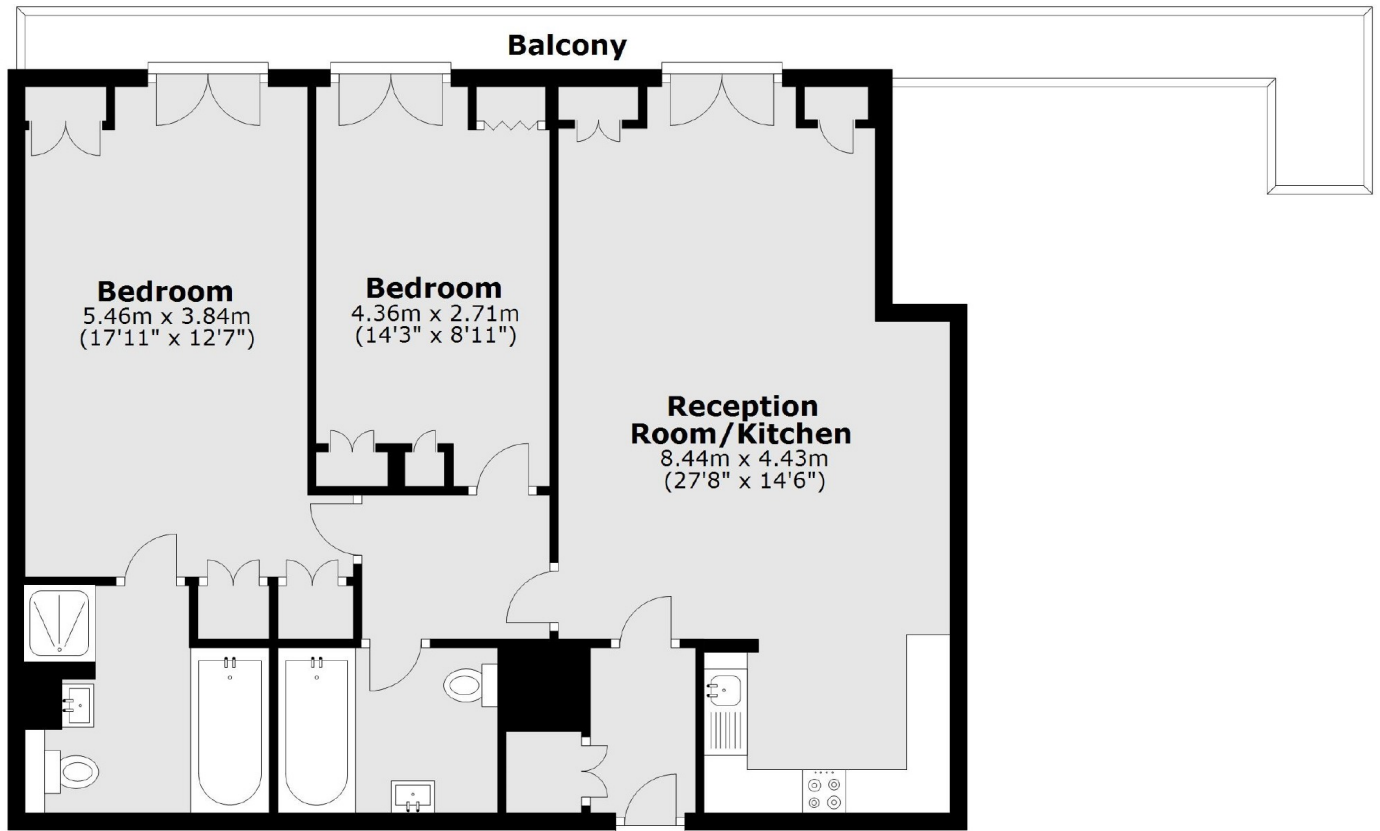
- Air Conditioning
- Two Double Bedrooms
- Open Plan
- Central Location
- Wooden Floors
- Fifth Floor with a Lift







Market Place, London, W1W



Main area: Approx. 87.6 sq. metres (942.8 sq. feet)
Plus balconies, approx. 12.6 sq. metres (135.9 sq. feet)

Dexters

Fitzrovia & Covent Garden
66 Goodge Street
London
W1T 4NG
Lettings
020 7067 2402

Energy Rating: C. We aim to make our particulars both accurate and reliable. However they are not guaranteed; nor do they form part of an offer or contract. If you require clarification on any points then please contact us, especially if you're traveling some distance to view. Please note that appliances and heating systems have not been tested and therefore no warranties can be given as to their good working order.

 **RICS** | Regulated
Estate Agent
and Letting Agent

[dexters.co.uk](https://www.dexters.co.uk)