



## Adeline Place, WC1B

£915 Per week

This exceptionally spacious two bedroom flat on the raised ground floor has well-preserved Victorian period features in each room. The property has high ceiling along with generous storage spaces. This well-lit apartment has a modern fitted kitchen and unspoilt wooden flooring throughout. Hot water and heating bills are included in rent expenses.

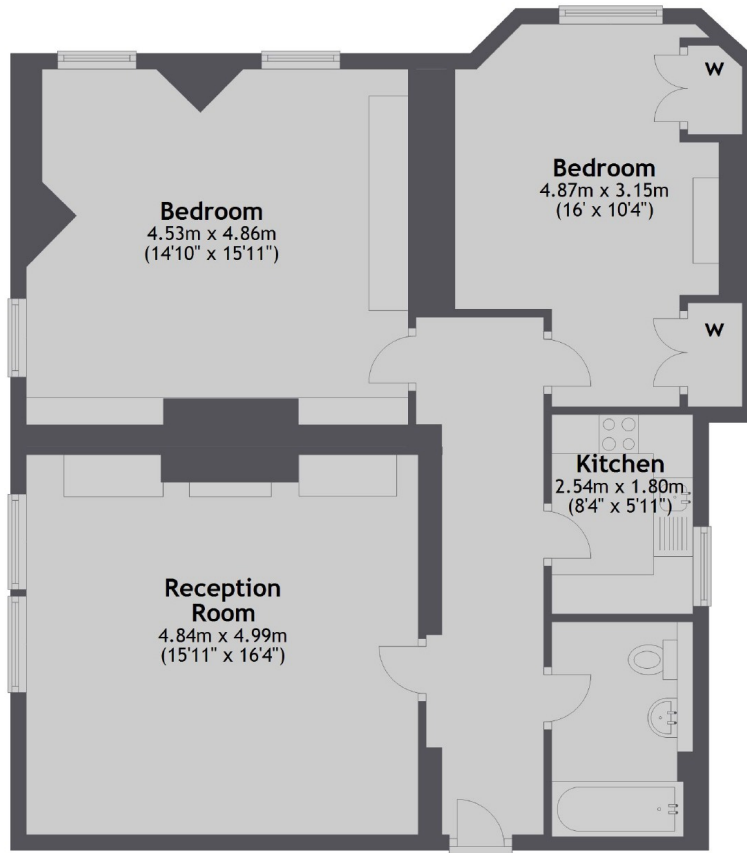
Bedford Court Mansions is a very well kept mansion block situated just off Bedford Square. It is a few minutes walk from Tottenham Court rail for tube/rail links. It is a short walk as well to Oxford Street and the delights of Fitzrovia.

### Features

- Two Bedroom
- Wooden Flooring
- Double Height Ceilings
- Original Period Features
- Newly Refurbished
- Heating Included
- Hot Water Included

# Adeline Place, London, WC1B

## Raised Ground Floor



Total area: approx. 86.5 sq. metres (931.1 sq. feet)