



Pemberton Row, EC4A

£600 Per week

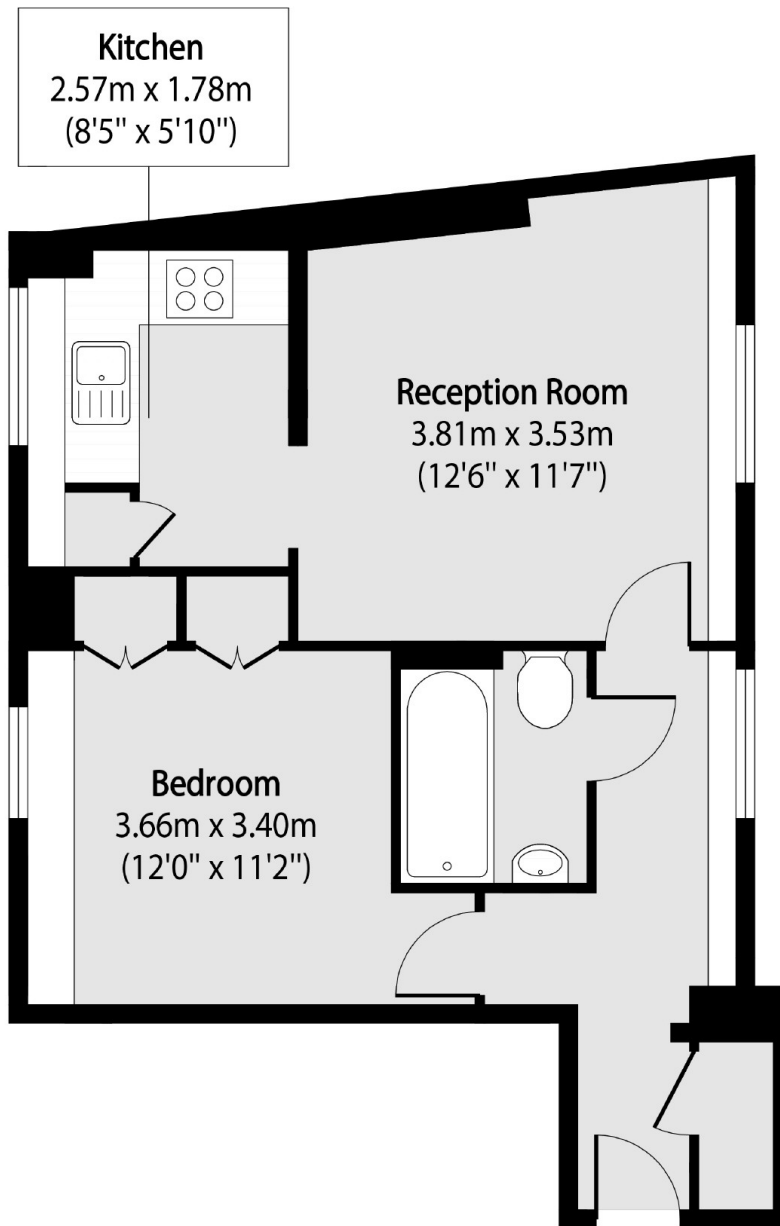
A well proportioned and well maintained one bedroom flat, located on the first floor with lift, and situated just off Fleet Street and Fetter Lane.

Pemberton Row is located just off Fleet Street and is within half a mile to Chancery Lane, Temple and Blackfriars stations. There is a wide variety of shops, restaurants and bars in nearby Holborn and Covent Garden.

Features

Furnished/Unfurnished
Separate Kitchen
Centrally Located
Lift
Modern Bathroom
Spacious

Pemberton Row, London, EC4A



Total area (approx): 39.20 sq m (422 sq. ft)