



## Great Turnstile, WC1V

£750 Per week

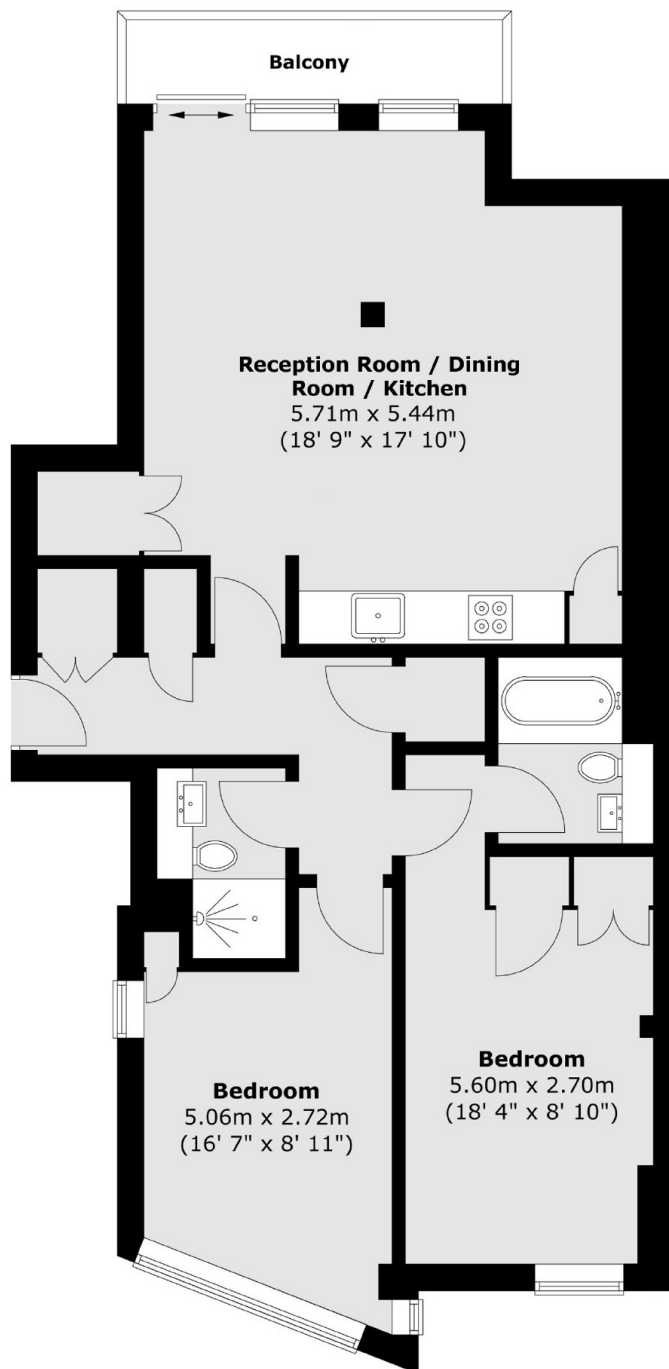
A modern and spacious two bedroom two bathroom 3rd floor apartment within the architecturally designed Great Turnstile House development with ample storage and a balcony.

Great Turnstile House is situated off High Holborn next to Lincoln's Inn Fields within central Holborn. The property provides excellent access to Holborn's restaurants, bars and shopping.

### Features

- Secure Development
- Balcony
- Separate Storage Unit
- Wood Floors
- Open Plan Kitchen
- Centrally Located

# Great Turnstile, London, WC1V



Total area (approx.) : 74.8 sq. m (805 sq. ft)  
Total balcony area (approx.) : 3.7 sq. m (40 sq. ft)

**Dexters**

Fitzrovia & Covent Garden  
66 Goodge Street  
London  
W1T 4NG  
Lettings  
020 7067 2402

Energy Rating: B. We aim to make our particulars both accurate and reliable. However they are not guaranteed; nor do they form part of an offer or contract. If you require clarification on any points then please contact us, especially if you're traveling some distance to view. Please note that appliances and heating systems have not been tested and therefore no warranties can be given as to their good working order.

 **RICS** | Regulated  
Estate Agent  
and Letting Agent

dexters.co.uk