



Percy Mews, W1T

£700,000

A bright two double bedroom top floor apartment. Located in the corner of a quiet cobbled mews moments from Tottenham Court Road Station and the West End.

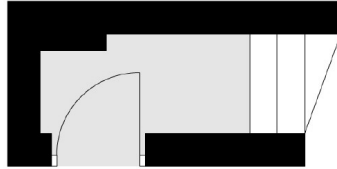
The restaurants, galleries and coffee houses of Fitzrovia are on the doorstep. Theatreland and Oxford Street are accessible on foot.

Features

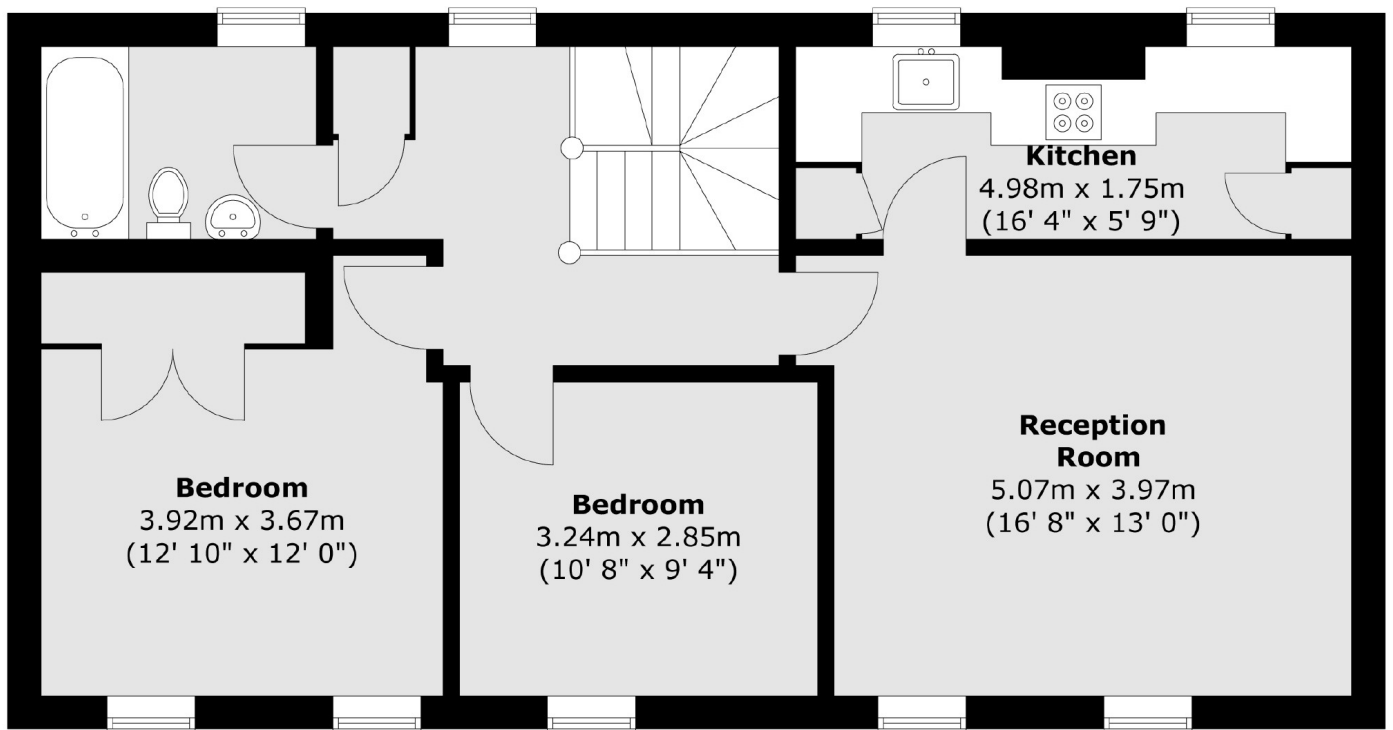
Two Double Bedrooms
Mews Location
Top Floor
Newly Decorated
Chain Free

Percy Mews, London, W1T

First Floor



Second Floor



Total area (approx.) : 72.7 sq. m (782 sq. ft)