



Hanway Place, WIT

£900,000

Dexters



Hanway Place, W1T

A two double bedroom, two bathroom apartment with over 900 sq ft of internal space. Fitzrovia, Soho and Covent Garden are accessible within minutes.

The apartment comprises of a galleried reception area, double height windows, exposed brickwork en-suite bathroom off master bedroom, the custom kitchen is fully equipped with central island.

The property also benefits from a private terrace and is conveniently located within a few minutes walk from Tottenham Court Road, Holborn Station and Oxford Circus.

The nearest station is Tottenham Court Road where the Elizabeth line provides direct access to London Heathrow to the west, Liverpool Street and Canary Wharf to the East.

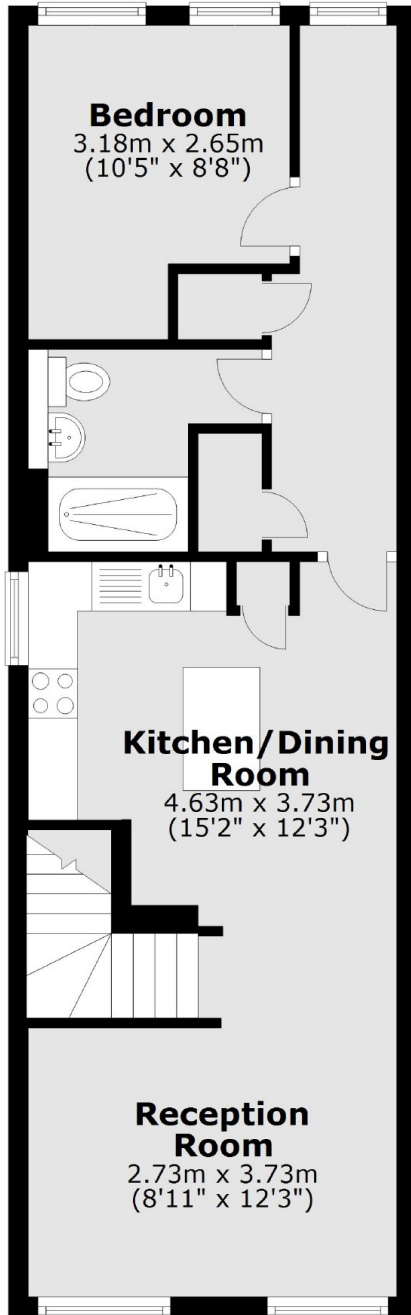
Features

- Two Double Bedrooms
- Main Bedroom En-Suite
- Shower Room
- Open Living Area
- Reception/Study

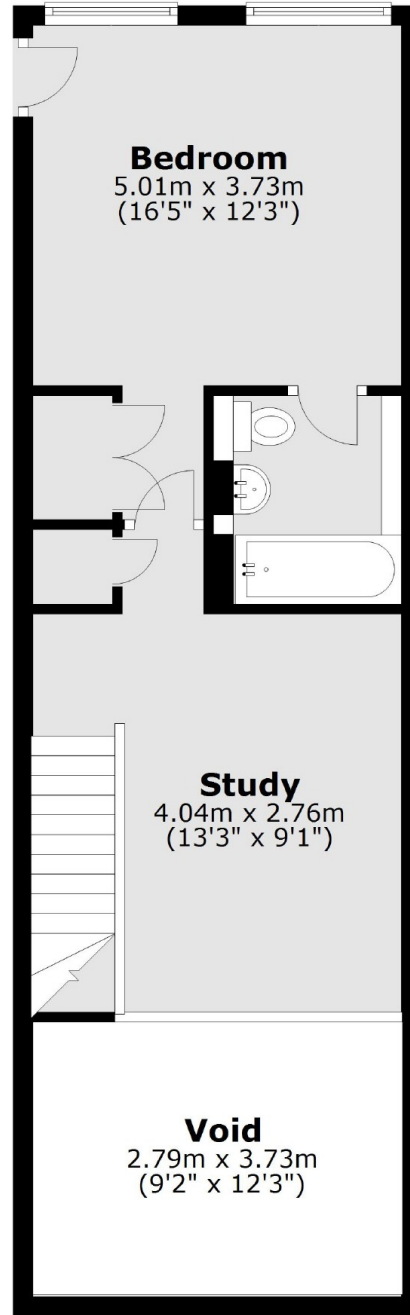


Hanway Place, London, W1T

First Floor



Second Floor



Total area: approx. 85.4 sq. metres (919.2 sq. feet)