



## Hanway Place, W1T

£950,000

A two double bedroom, two bathroom apartment with over 900 sq ft of internal space. Fitzrovia, Soho and Covent Garden are accessible within minutes.

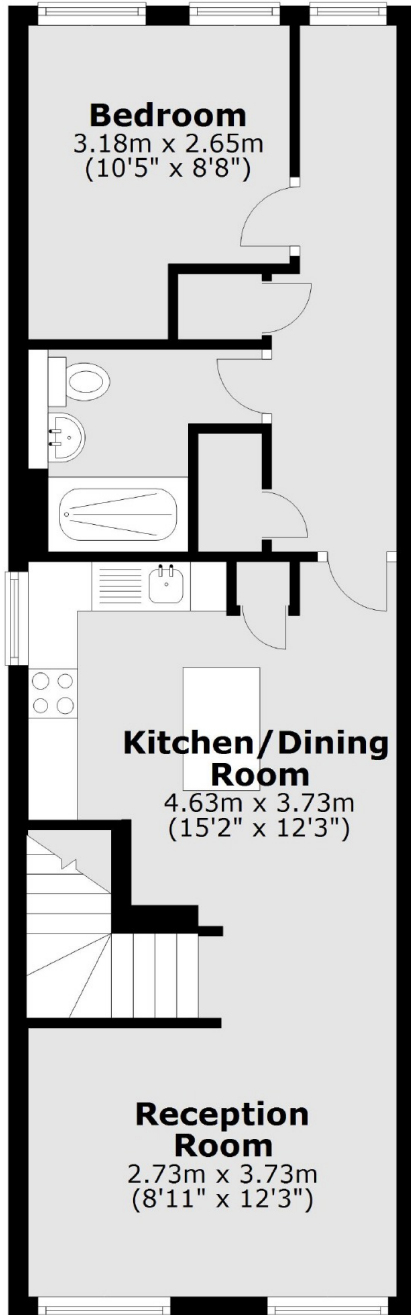
The nearest station is Tottenham Court Road where the Elizabeth line provides direct access to London Heathrow to the west, Liverpool Street and Canary Wharf to the East.

### Features

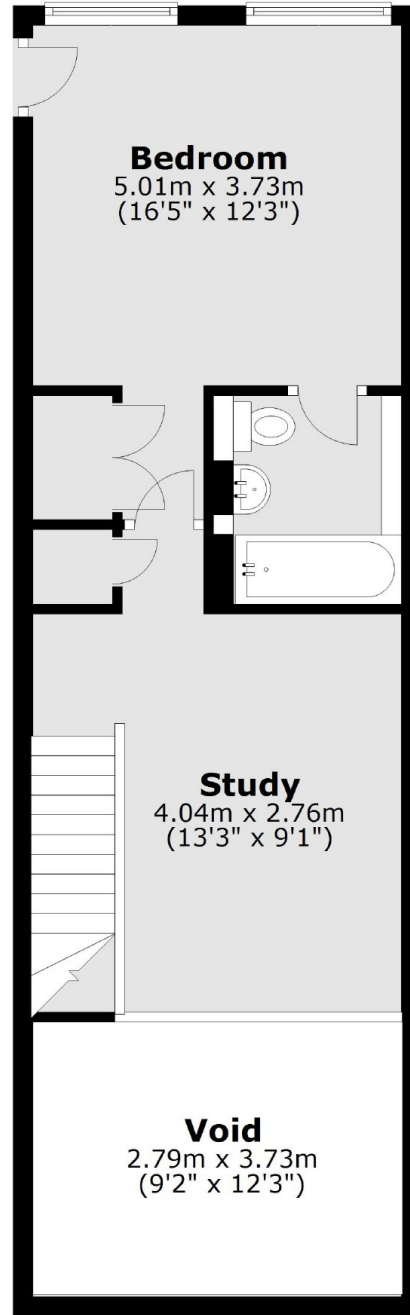
Two Double Bedrooms  
Main Bedroom En-Suite  
Shower Room  
Open Living Area  
Reception/Study

# Hanway Place, London, W1T

## First Floor



## Second Floor



Total area: approx. 85.4 sq. metres (919.2 sq. feet)