

## Panton Street, SW1Y

£427 Per week

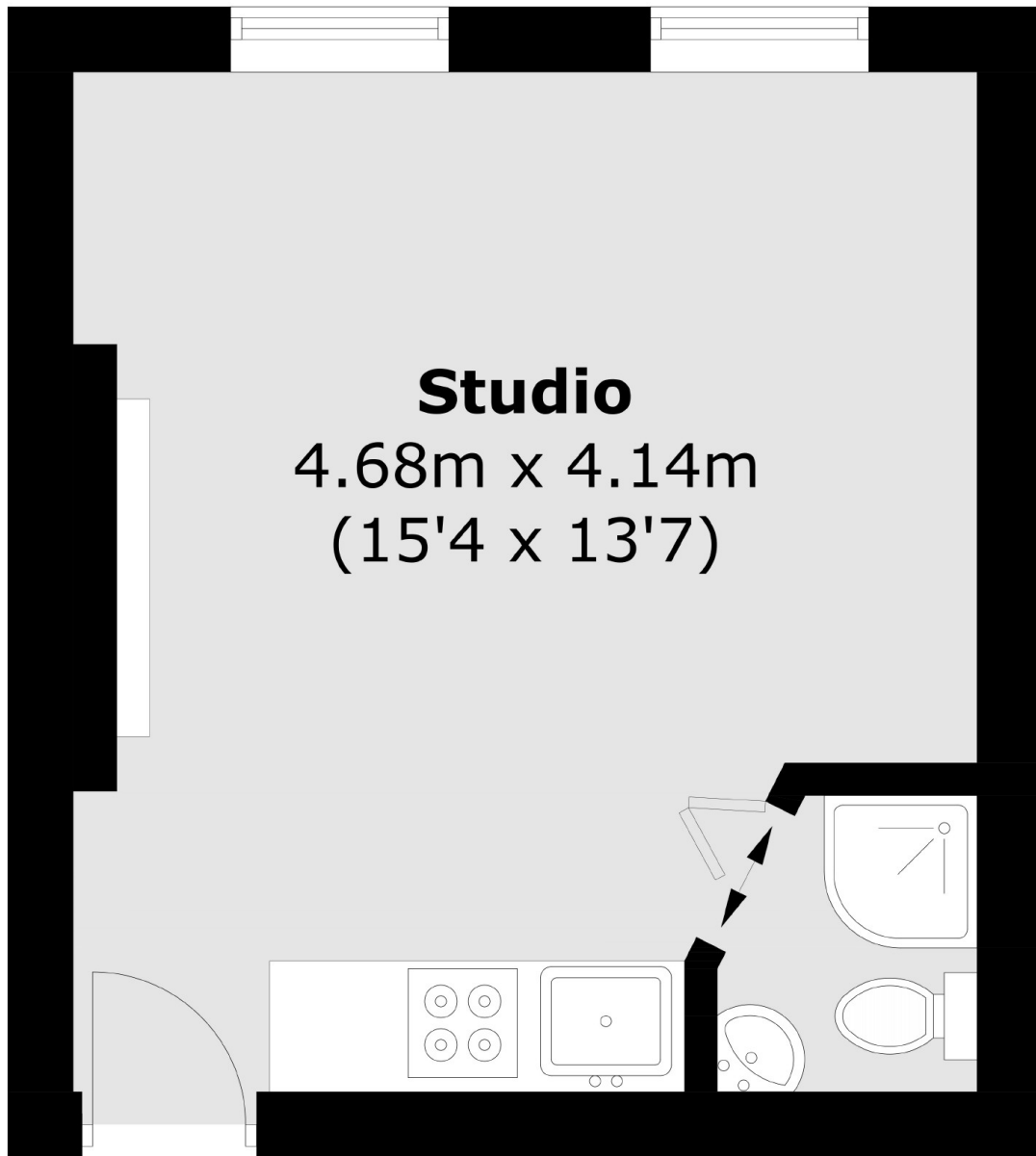
A modern studio with a private shower room, kitchenette, and wooden flooring conveniently located on the second floor, only moments away from Leicester Square.

Conveniently located off the Haymarket, moments away from St James's Park, Westminster and the West End.

### Features

- Studio Flat
- One Bathroom
- Second Floor
- Fully Furnished
- Central Location
- Wooden Flooring

**Panton Street,  
London, SW1Y**



Total area (approx.): 19.5 sq. m (209.9 sq. ft)

**Dexters**

Fitzrovia & Covent Garden  
66 Goodge Street  
London  
W1T 4NG  
Lettings  
020 7067 2402

Energy Rating: D. We aim to make our particulars both accurate and reliable. However they are not guaranteed; nor do they form part of an offer or contract. If you require clarification on any points then please contact us, especially if you're traveling some distance to view. Please note that appliances and heating systems have not been tested and therefore no warranties can be given as to their good working order.

 **RICS** | Regulated  
Estate Agent  
and Letting Agent

[dexters.co.uk](http://dexters.co.uk)