

Colosseum Terrace, NW1

£750 Per week

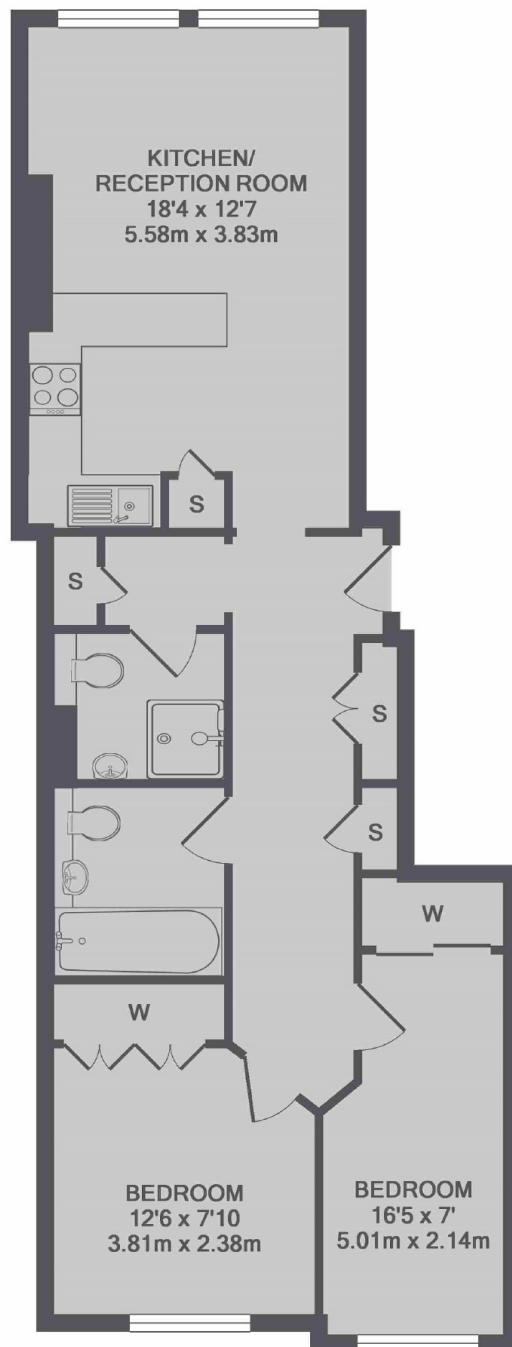
A spacious and newly refurbished two double bedroom, two bathroom apartment on the ground floor of this well maintained Period Mansion house.

Colosseum Terrace is a popular street which runs from Marylebone Road up to Gloucester Gate and is just moments from Great Portland Street Underground Station.

Features

- Central Location
- Ground Floor
- Two Bedrooms
- Period Conversion
- High Ceilings
- Recently Refurbished

Colosseum Terrace, London, NW1



TOTAL APPROX. FLOOR AREA 699 SQ.FT. (64.9 SQ.M.)