



Hobhouse Court, SW1Y

£675 Per week

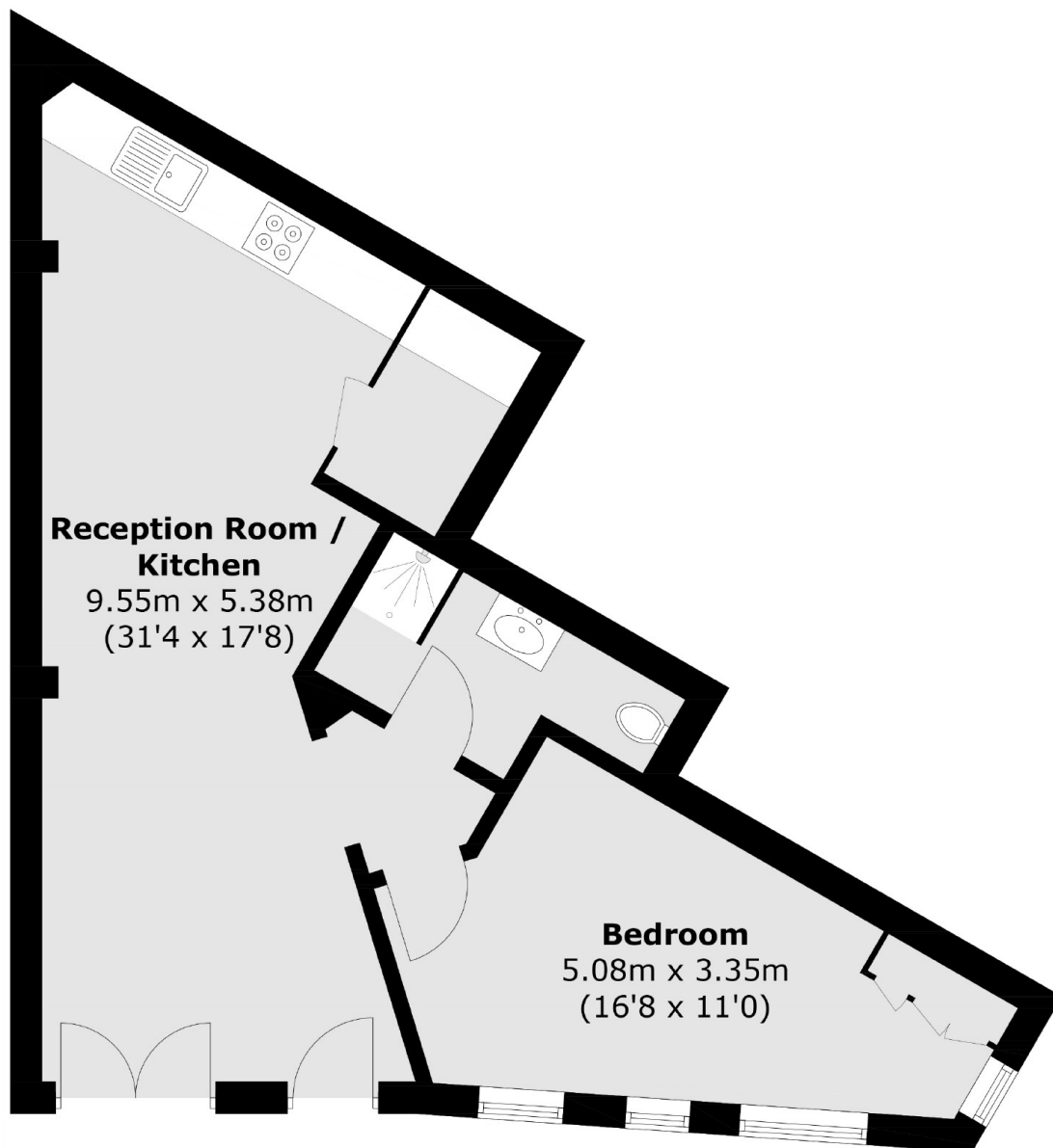
A stunning one bedroom, one bathroom apartment on the ground floor of the gated prestigious Hobhouse Court development.

Hobhouse Court is located less than 50 meters from Trafalgar Square and is between Mayfair, Leicester Square and St James's Park. Leicester Square Station, Piccadilly Circus and Charing Cross Station are all located within walking distance of the development.

Features

- New Modern Development
- Concierge
- Gated Development
- Prime Location
- Modern
- Bright & Spacious

Hobhouse Court, London, SW1Y



Total area (approx.): 48.2 sq. m (518.8 sq. ft)