



Rathbone Place, W1T

£1,500 Per week

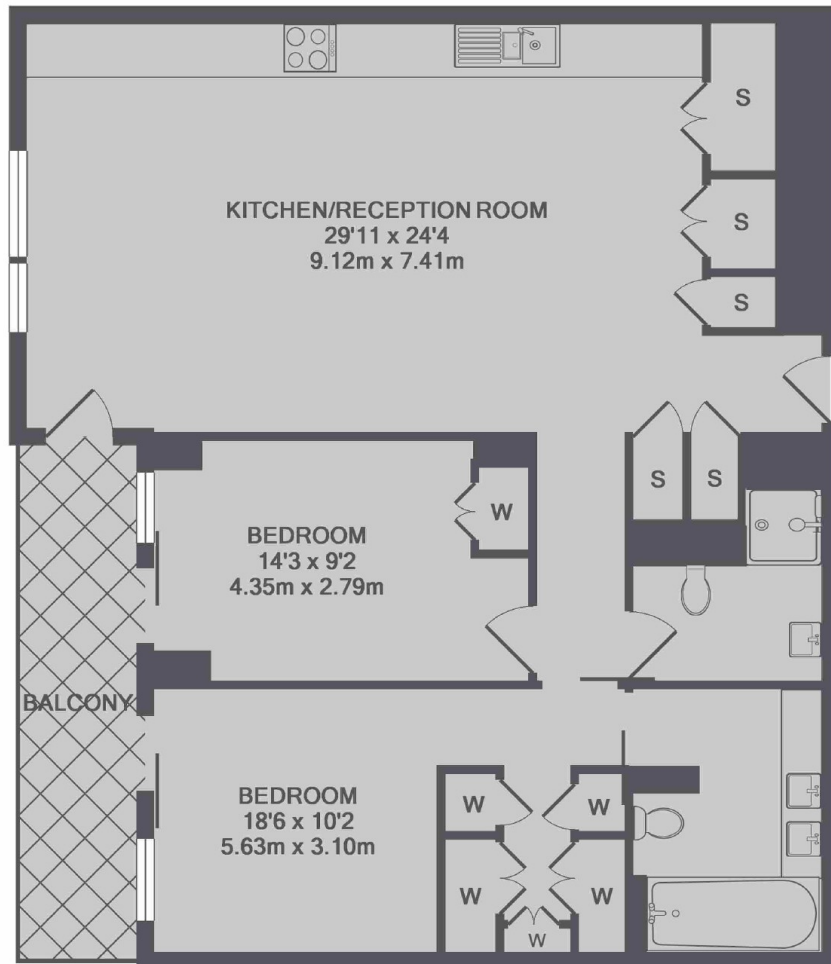
A spacious and bright two double bedroom apartment with private balcony on the third floor of this brand new highly sought after development located just off Oxford Street in central Fitzrovia.

Rathbone Square has been designed to offer a tranquil environment, whilst being conveniently located in the heart of London's West End and just off Oxford Street.

Features

- New Build
- Two Bedroom/Two Bathroom
- 24-Hour Concierge
- Swimming Pool
- Gym/Spa
- Screening Room

Rathbone Place, London, W1T



TOTAL APPROX. FLOOR AREA 951 SQ.FT. (88.3 SQ.M.)