



**Fetter Lane, EC4A**

**£1,700** Per week

**Dexters**



## Fetter Lane, EC4A

This two double bedroom, three bathroom modern penthouse is conveniently located opposite of the King's College Library with stunning views from the flat's private terrace. The property has an open-plan kitchen/reception area and is fully furnished with wooden floors throughout.

This unique penthouse apartment is placed in a new building on Fetter Lane with the concierge and lift access. The apartment has an access onto private terrace with stunning views of King's College Library.

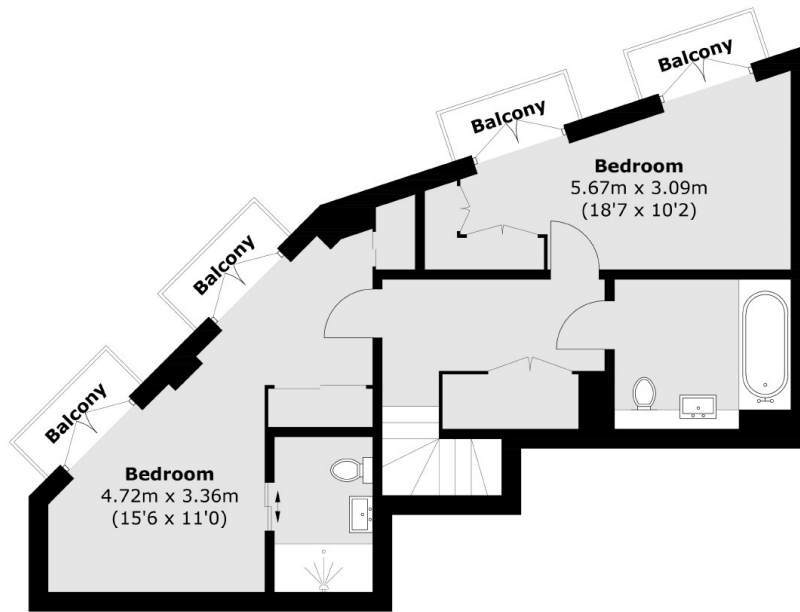
Fetter Lane is located just off Fleet Street within easy reach of the shops, bars and restaurants of the West End with both Chancery Lane and Holborn Stations within half a mile.

### Features

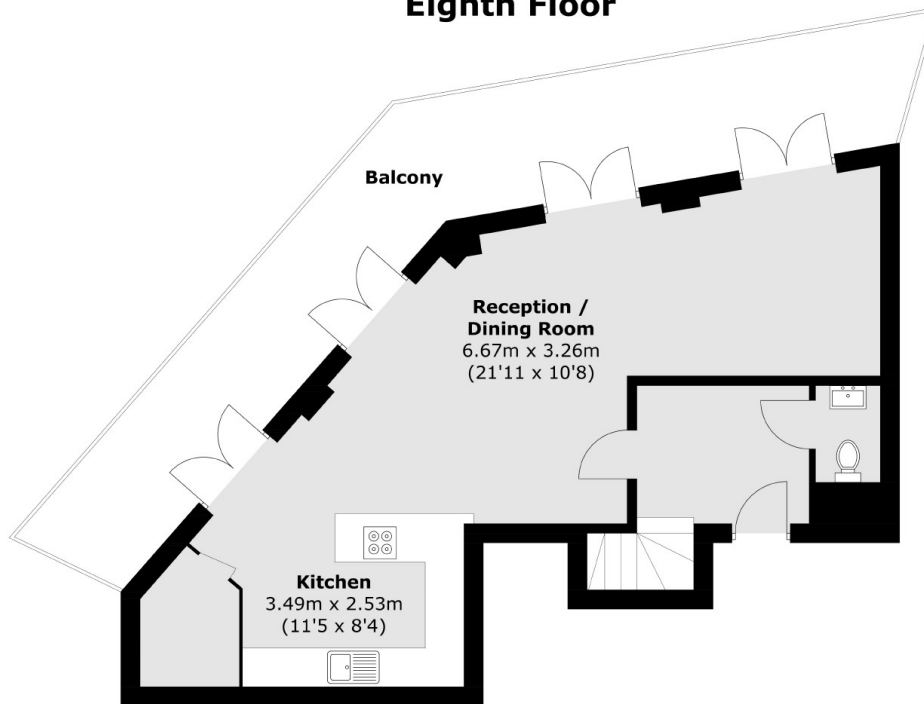
- Two Bedroom
- Three Bathroom
- Penthouse Apartment
- King's College Library Views
- Private Terrace
- Concierge



# Fetter Lane, London, EC4A



**Eighth Floor**



**Seventh Floor**

Total area (approx.): 107.5 sq. m (1,157.1 sq. ft)  
Balcony : 35.9 sq. m (386.4 sq. ft)