



**Tottenham Street, W1T**

**£1,200** Per week

**Dexters**



## Tottenham Street, W1T

A unique house in the heart of Fitzrovia, spread over four floors. This fantastic town house offers two large double bedrooms, one separate study, a private gated car parking space and offers over 1,400 Sq ft of living space.

The property has substantial outside space, that can double up as a parking space.

Tottenham Street is a quiet street nearby the trendy Charlotte Street in the heart of fashionable Fitzrovia.

The property is located amongst the many bars, restaurants and cafés of Fitzrovia, including The Charlotte Street Hotel and Michelin starred 'Pied De Terre'. The nearest Underground stations are Goodge Street and Tottenham Court Road.

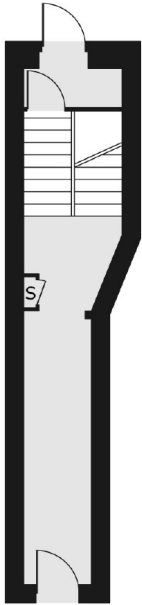
### Features

- Outside Space/Parking Space
- Spread Over 4 Floors
- Unfurnished
- Over 1,400 Sq ft
- Wooden Floors
- Well-Lit

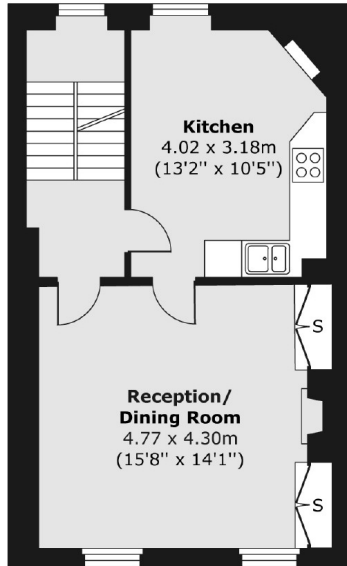


# Tottenham Street, London, W1T

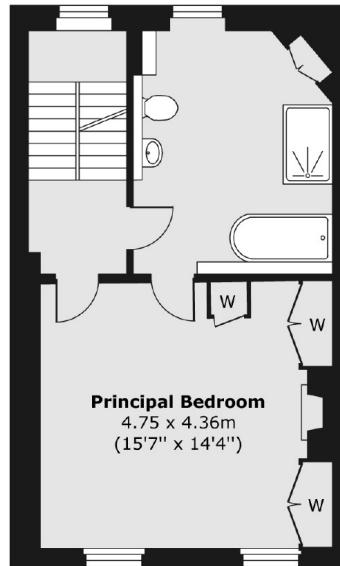
Raised Ground Floor



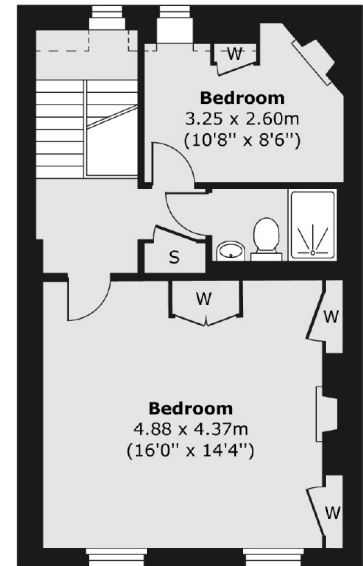
First Floor



Second Floor



Third Floor



Total area (approx.) 134.20 sq. m (1,445 sq. ft)