

Suffolk Street, SW1Y

£795 Per week

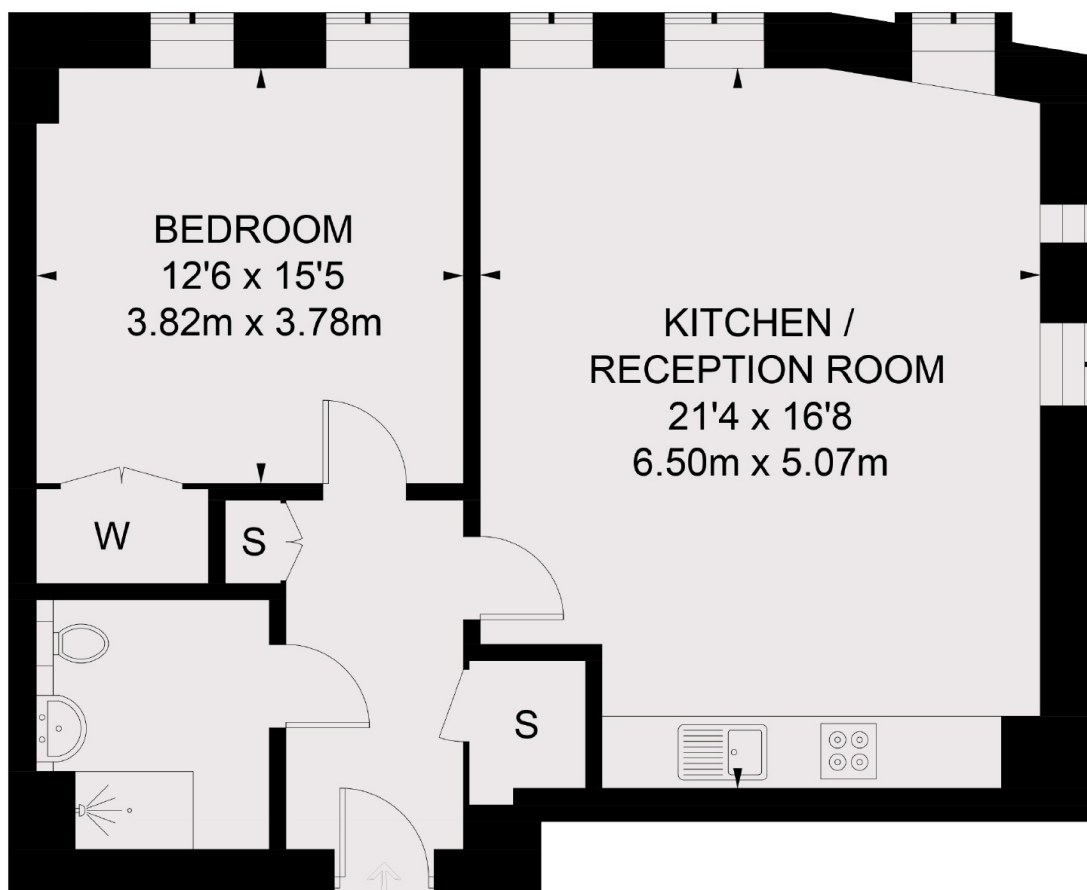
A luxurious one bedroom apartment on the third floor of the gated brand new Hobhouse Court development designed by Arquitectonica with on site porter, air conditioning, communal courtyard and separate storage units and bicycle storage in an unrivalled prestigious location.

Hobhouse is located less than 50 meters from Trafalgar Square between St James's, Mayfair, Soho, Covent Garden, Leicester Square and Trafalgar Square and St James's Park nearby to Leicester Square Station as well as Piccadilly Circus and Charing Cross Station.

Features

- Unrivalled location
- Gated Development
- On site porter
- Comfort cooling
- Bicycle Storage
- Fully managed

Suffolk Street, London, SW1Y



THIRD FLOOR

TOTAL APPROX. FLOOR AREA 658 SQ. FT. (61.1 SQ. M.)