



Marshall Street, W1F

£550 Per week

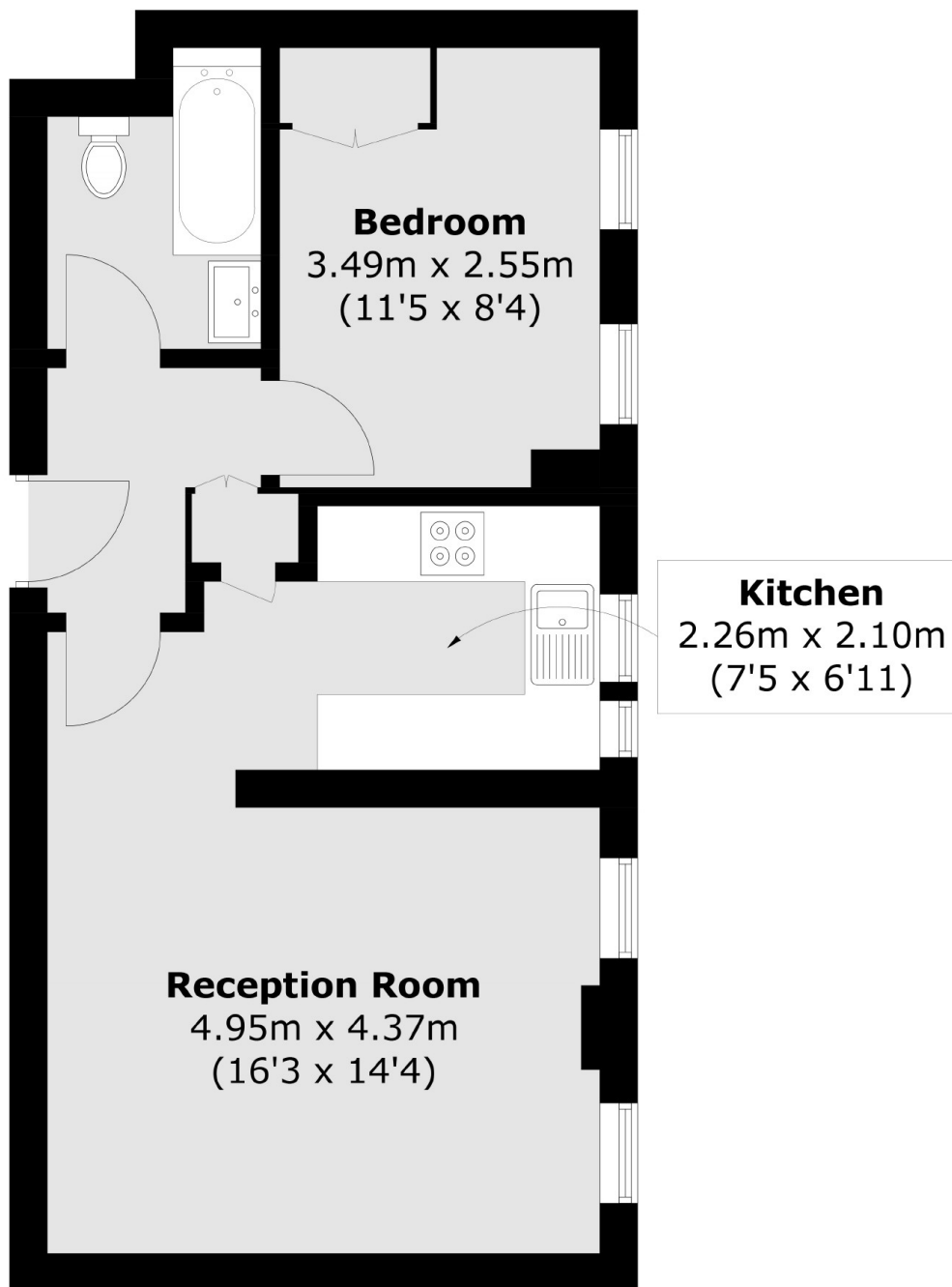
This one-bedroom apartment is located in a modern building metres from London's Carnaby Street and Regents Street. The fifth floor accommodation is well maintained and residents benefit from a secure entrance, a modern passenger lift including access to a shared roof terrace.

Marshall Street is ideally located in the heart of London's West End offering a variety of shops, restaurants and bars. Carnaby Street and Piccadilly Circus are close by.

Features

- Fifth Floor
- Lift Access
- Bright
- Shared Roof Terrace
- Modern
- West End Location

Marshall Street, London, W1F



Total area (approx.): 41.8 sq. m (449.9 sq. ft)