



Hobhouse Court, SW1Y

£750 Per week

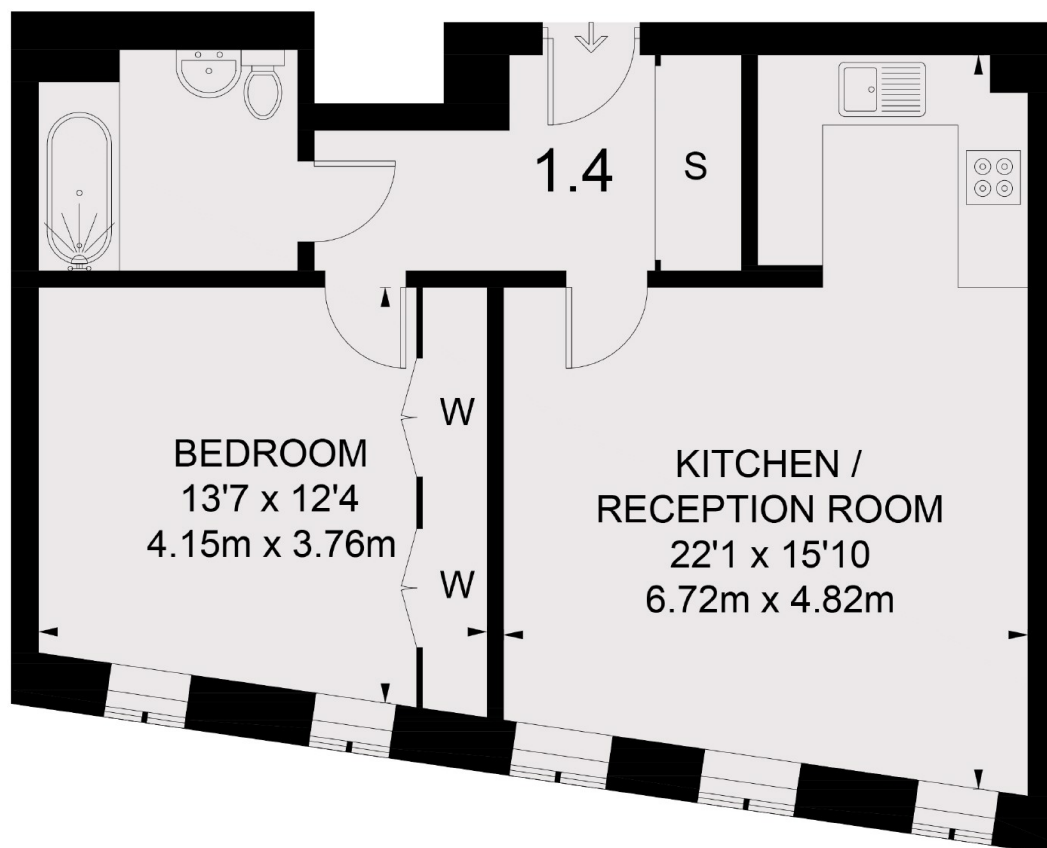
A brand new developed spacious one bedroom apartment on the first floor of this prestigious new development in the heart of London.

Hobhouse is located in between Leicester Square and Trafalgar Square and nearby to Leicester Square Station as well as Piccadilly Circus and Charing Cross Station.

Features

- One Bedroom
- Concierge
- Central Location
- Wooden Floors
- Spacious
- Lift

Hobhouse Court, London, SW1Y



FIRST FLOOR

TOTAL APPROX. FLOOR AREA 598 SQ. FT. (55.6 SQ. M.)