



Pearson Square, W1T

£1,350 Per week

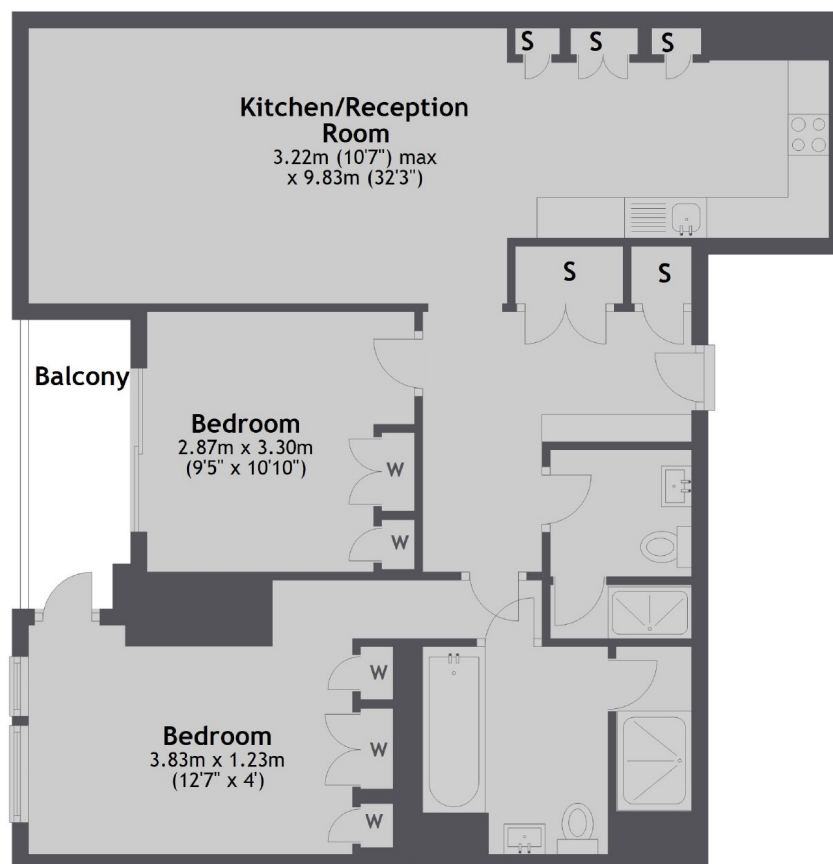
A recently refurbished two double bedroom, two bathroom apartment on the sixth floor of this highly acclaimed and sought after luxury development, with 24 hour concierge, cinema and spa facilities, in the heart of Fitzrovia.

Pearson Square is located in the heart of Fitzrovia with all its local amenities just moments away. Goodge Street, Great Portland Street and Oxford Circus Stations are all a short walk away.

Features

- Two Double Bedrooms
- Two Bathrooms
- Sixth Floor
- Private Terrace
- 24 Hour Concierge
- Gym And Spa

Pearson Square, London, W1T



Sixth Floor

Total area: approx. 76.4 sq. metres (822.8 sq. feet)