

Pearson Square, WIT

£1,350 Per week

Dexters



Pearson Square, W1T

A recently refurbished two double bedroom, two bathroom apartment on the sixth floor of this highly acclaimed and sought after luxury development, with 24 hour concierge, cinema and spa facilities, in the heart of Fitzrovia.

The apartment has wood floors throughout a bright living/dining room with recessed spotlights and open plan kitchen with integrated appliance's. The master bedroom has a stylish en suite bathroom and there is second double bedroom and second bathroom. The apartment is air-conditioned.

As a resident you benefit from 24 hour concierge and access to the Fitzroy Residents Club offering a wide range of facilities.

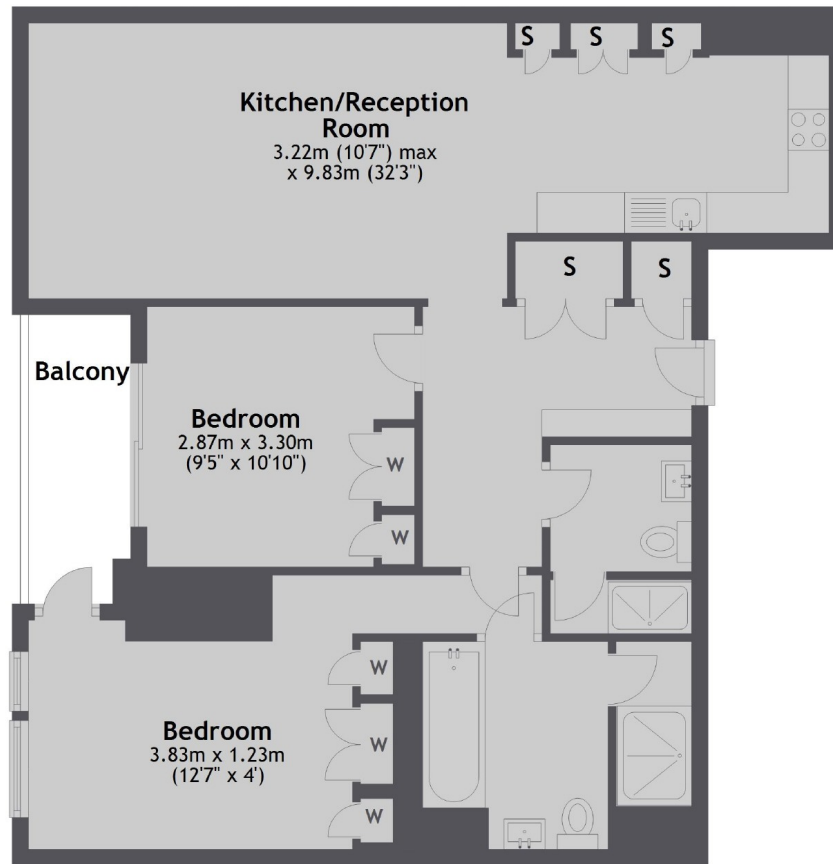
Pearson Square is located in the heart of Fitzrovia with all its local amenities just moments away. Goodge Street, Great Portland Street and Oxford Circus Stations are all a short walk away.

Features

- Two Double Bedrooms
- Two Bathrooms
- Sixth Floor
- Private Terrace
- 24 Hour Concierge
- Gym And Spa



Pearson Square, London, W1T



Sixth Floor

Total area: approx. 76.4 sq. metres (822.8 sq. feet)