



New Cavendish Street, W1W

£550 Per week

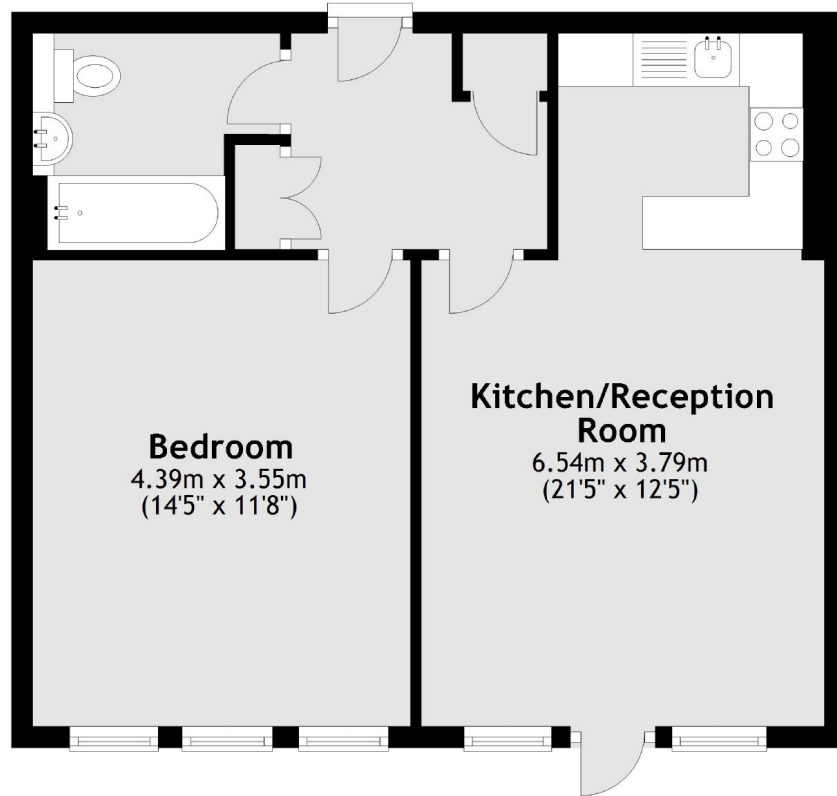
A one double bedroom apartment with a terrace and views across London. The property has ample storage, lift access and is situated on New Cavendish Street in central Fitzrovia.

The property is centrally located in the heart of Fitzrovia and Oxford Street, Goodge Street and Regent Street are all within half a mile away from the property.

Features

- Large Terrace
- Wood Floors
- Excellent Views
- Spacious Bedroom
- Open Plan Kitchen
- Sixth Floor (With Lift)

New Cavendish Street, London, W1W



Total area: approx. 48.5 sq. metres (522.1 sq. feet)