



Soho Square, W1D

£1,850 Per week

Dexters



Soho Square, W1D

An exceptionally spacious and architecturally designed three double bedroom lateral apartment within this prominent Georgian house, on one of the West Ends rare and most sought after garden squares.

Built over 350 years ago, and with a distinguished history, the house has been meticulously converted into five bespoke luxury apartments each running the entire width of the building,

This stylish and contemporary apartment on the lower ground floor of the building is entered directly into the large open plan living room and kitchen dining room and features wood floors, underfloor heating and high ceilings with recessed spot lights.

The well equipped open plan kitchen has top of the range integrated appliances and composite work surfaces. There are three double bedrooms, three bathrooms and a good size private terrace. There is also a large private cellar and an abundance of storage in the vaults.

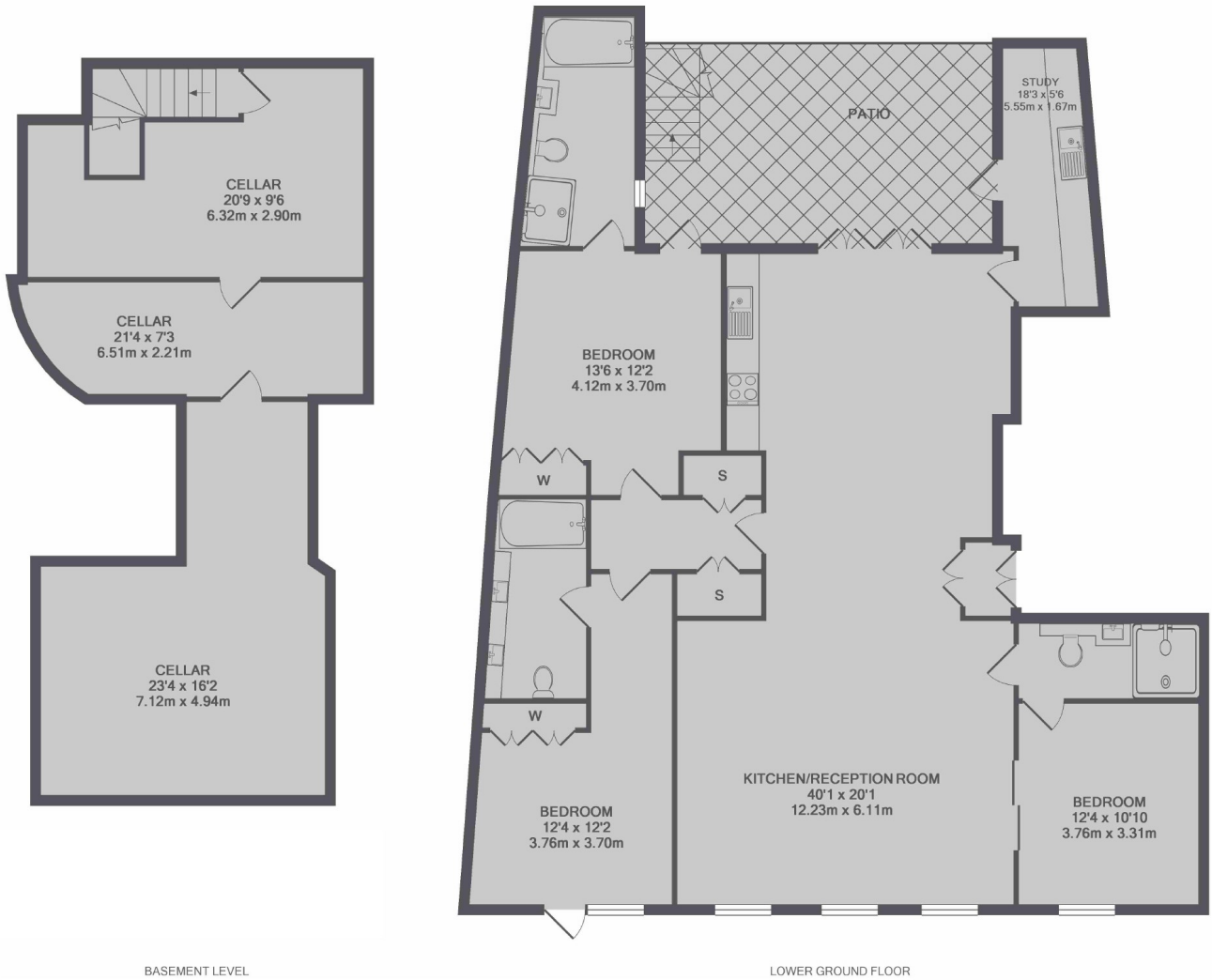
The house overlooks the square and is perfectly positioned for easy access to all the amenities the West End has to offer. It is well served for a wide array of transport links and is within 1km radius of Oxford Street.

Features

- Three Double Bedrooms
- Three Bathrooms
- In Excess of 1600sq ft
- Wood Floors
- Private Terrace
- Private Cellar



Soho Square, London, W1D



TOTAL APPROX. FLOOR AREA 2387 SQ.FT. (221.7 SQ.M.)