



Great Portland Street, W1W

£1,050 Per week

Dexters



Great Portland Street, W1W

An exceptionally spacious and modern two double bedroom apartment located on the third floor of this prestigious portered building, close to Fitzrovia and Great Portland Street.

This large, bright and well presented two double bedroom apartment has a long entrance hall that leads through to a large bright living/dining room with wooden floors, high ceilings and open plan kitchen diner with integrated appliances.

Quietly positioned to the rear of the building there is a huge master bedroom with lots of built in wardrobes and second double bedroom which also has fitted wardrobes and the bathroom has a shower over the bath.

The building has its own gym and membership is available from £50 per month.

Great Portland Street has a wide selection of local shops, cafés and restaurants and is centrally positioned between Oxford Street and Regents Park.

Features

Located on Great Portland Street, the property is well connected for transport

Two Double Bedrooms

The Armitage Development

High Ceilings

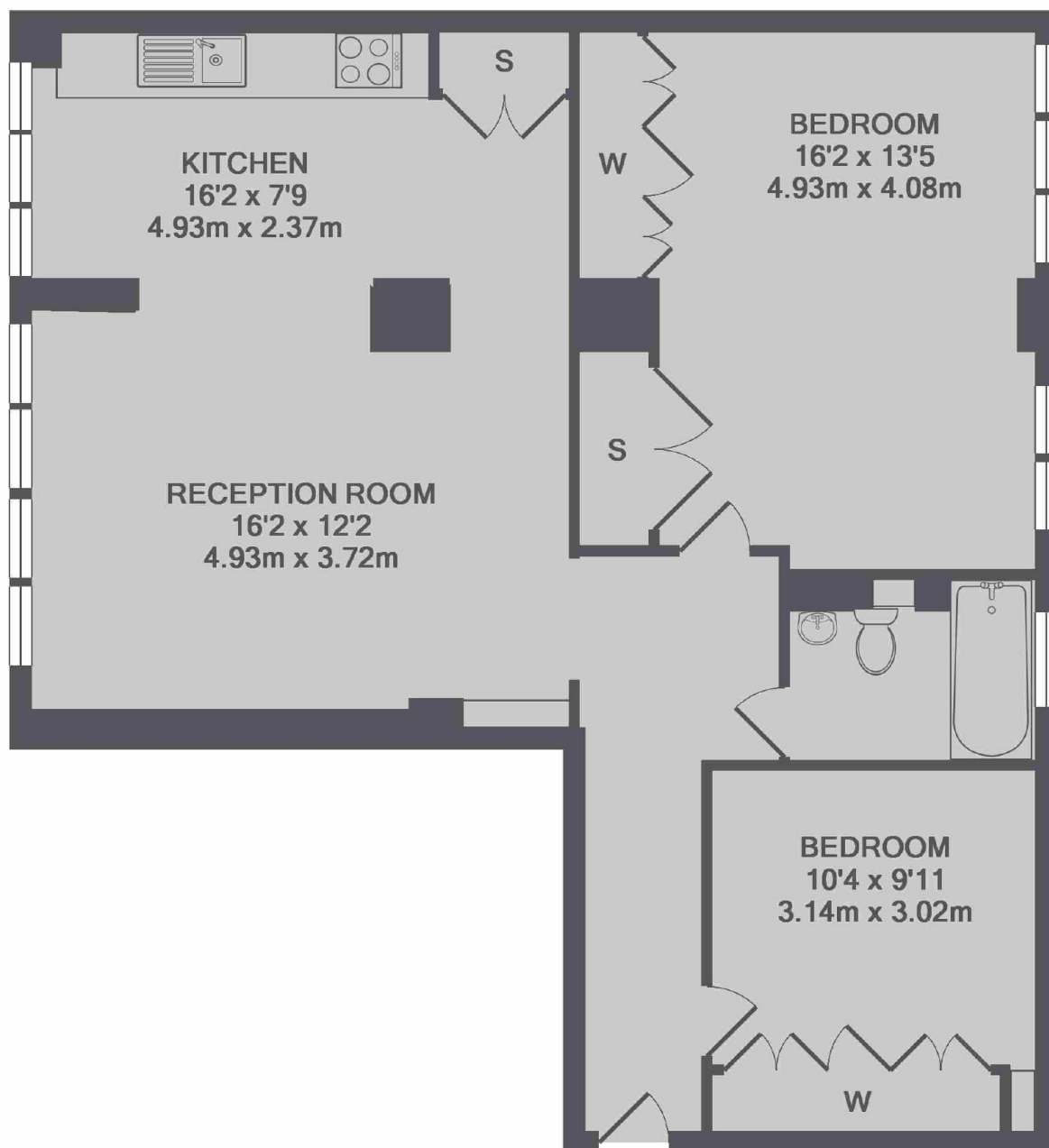
Wooden Floors

Great Storage

Porter



Great Portland Street, London, W1W



TOTAL APPROX. FLOOR AREA 791 SQ.FT. (73.5 SQ.M.)