



## Pemberton Row, EC4A

£645 Per week

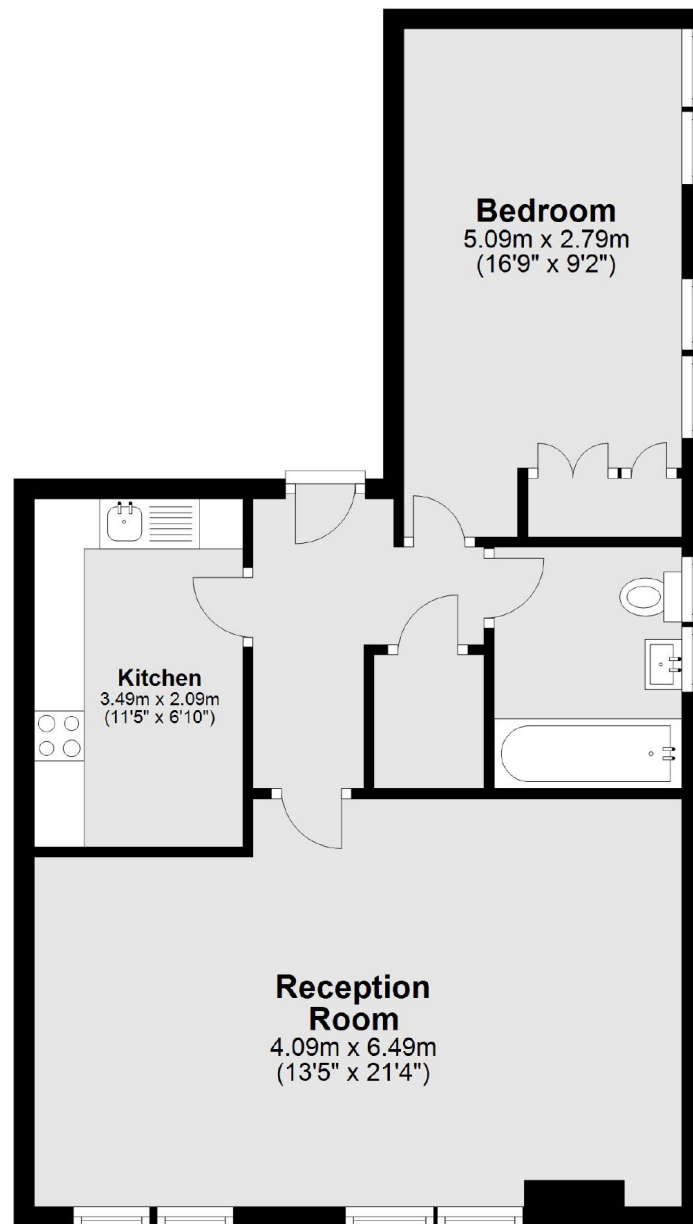
A well proportioned and well maintained one bedroom fifth floor flat, situated just off Fleet Street.

Pemberton Row is located just off Fleet Street and is within half a mile to Chancery Lane, Temple and Blackfriars stations. There is a wide variety of shops, restaurants and bars in nearby Holborn and Covent Garden.

### Features

- Furnished
- Separate Kitchen
- Centrally Located
- Modern Bathroom
- Large Bedroom
- Spacious

# Pemberton Row, London, EC4A



Total area: approx. 59.2 sq. metres (637.2 sq. feet)