



## St. Martin's Lane, WC2N

£2,565 Per week

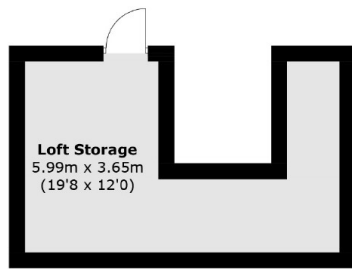
This charming four bedroom maisonette boasts a stunning ornate ceiling in the living room, adding character and style to the space. Spread over three floors, it offers ample living space, modern amenities, and a prime location in the heart of Trafalgar Square, just a stone's throw away from the Royal Opera House.

St. Martin's Lane runs from Seven Dials toward The Strand. Ideally located for the sights and amenities of Covent Garden, Leicester Square, Trafalgar Square and Piccadilly Circus. Leicester Square, Covent Gardens and Charing Cross Stations are all close by.

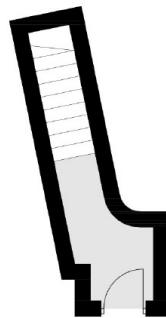
### Features

- Four Bedrooms
- Two Bathrooms
- Maisonette
- Newly Refurbished
- Ornate Ceilings
- Triplex

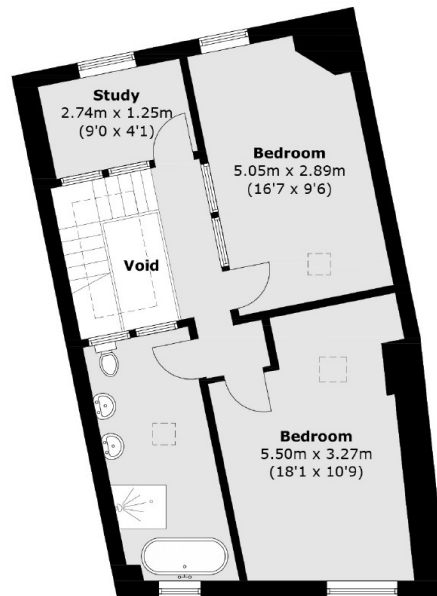
# St. Martin's Lane, London, WC2N



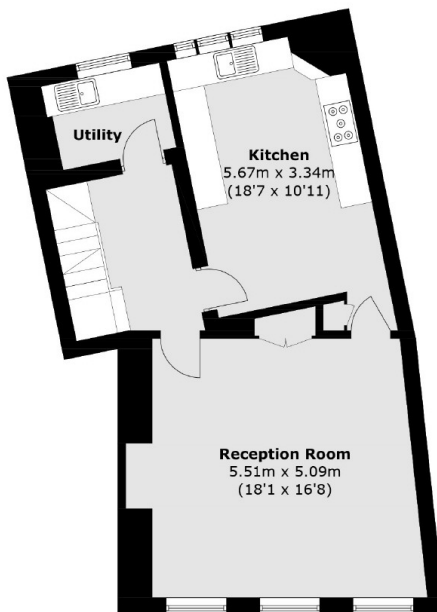
Loft Storage



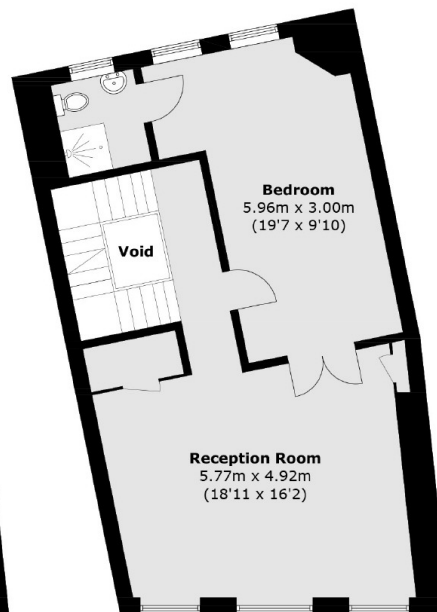
Ground Floor



Third Floor



First Floor



Second Floor

Total area (approx.): 195.3 sq. m (2,102.2 sq. ft)  
(Including Loft Storage / Excluding Void)