



St. Martin's Lane, WC2N

£2,850 Per week

Dexters



St. Martin's Lane, WC2N

This charming four bedroom maisonette boasts a stunning ornate ceiling in the living room, adding character and style to the space. Spread over three floors, it offers ample living space, modern amenities, and a prime location in the heart of Trafalgar Square, just a stone's throw away from the Royal Opera House.

As you enter the property, you'll be greeted by a spacious and bright living room with a truly unique and eye-catching feature. The rest of the property offers plenty of space for you and your family, with three bedrooms providing ample room for everyone to have their own private retreat. The kitchen and bathrooms are modern and well-appointed, making them functional and stylish.

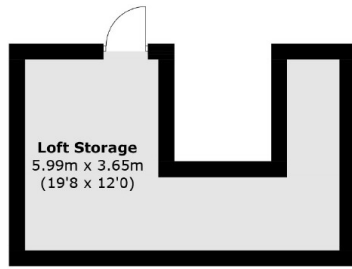
St. Martin's Lane runs from Seven Dials toward The Strand. Ideally located for the sights and amenities of Covent Garden, Leicester Square, Trafalgar Square and Piccadilly Circus. Leicester Square, Covent Gardens and Charing Cross Stations are all close by.

Features

- Four Bedrooms
- Two Bathrooms
- Maisonette
- Newly Refurbished
- Ornate Ceilings
- Triplex

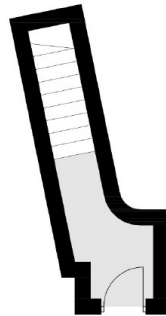


St. Martin's Lane, London, WC2N

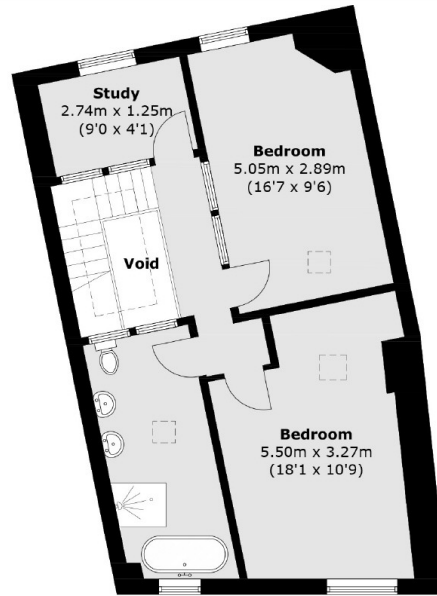


Loft Storage
5.99m x 3.65m
(19'8" x 12'0")

Loft Storage



Ground Floor



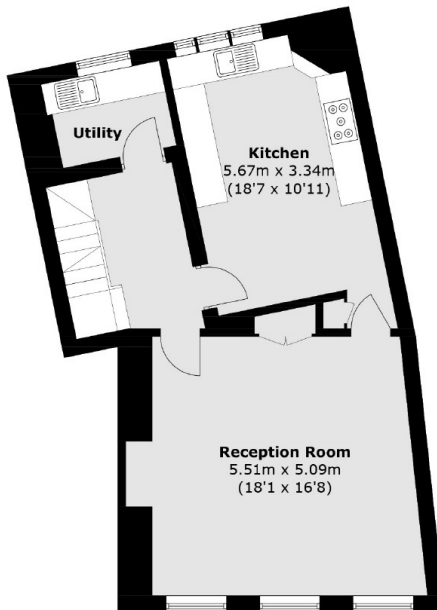
Study
2.74m x 1.25m
(9'0" x 4'1")

Bedroom
5.05m x 2.89m
(16'7" x 9'6")

Void

Bedroom
5.50m x 3.27m
(18'1" x 10'9")

Third Floor

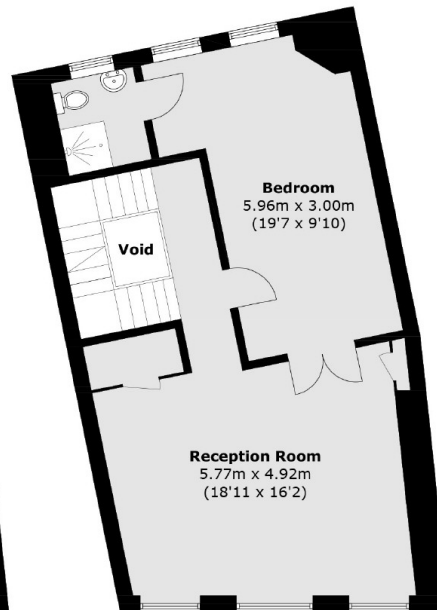


Utility

Kitchen
5.67m x 3.34m
(18'7" x 10'11")

Reception Room
5.51m x 5.09m
(18'1" x 16'8")

First Floor



Bedroom
5.96m x 3.00m
(19'7" x 9'10")

Void

Reception Room
5.77m x 4.92m
(18'11" x 16'2")

Second Floor

Total area (approx.): 195.3 sq. m (2,102.2 sq. ft)
(Including Loft Storage / Excluding Void)