



## Windmill Street, W1T

£2,000 Per week

**Dexters**



## Windmill Street, W1T

A bright and spacious three double bedroom duplex in the heart of Fitzrovia. The property is near UCL and Westminster making it ideal for three academics sharing.

The property is neutrally decorated throughout and is entered via the living/kitchen area. There is a large double bedroom just off the living area with glass doors and a further two double bedrooms on the upper floor. There is also a large bathroom with jacuzzi bath and walk in shower. There is storage and good natural light throughout. The property is offered part-furnished.

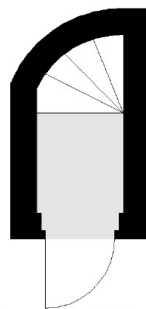
Windmill Street is just off Charlotte Street and nestled amongst its wide variety of bars and eateries including the Charlotte Street Hotel and the Michelin starred 'Pied a Terre'.

### Features

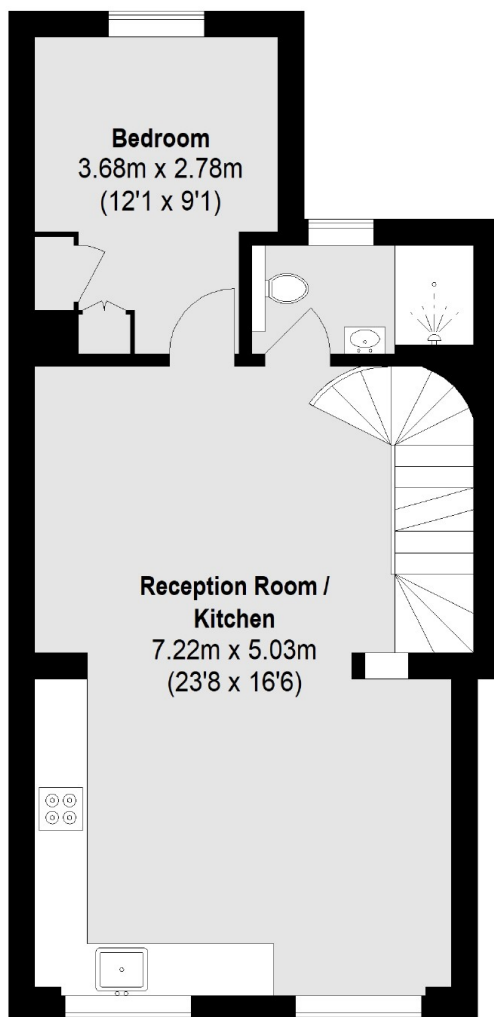
- Top Floor Duplex
- Wood Floors Throughout
- Three Double Bedrooms
- Jacuzzi Bath/Shower
- Good Natural Light
- Near Many Universities



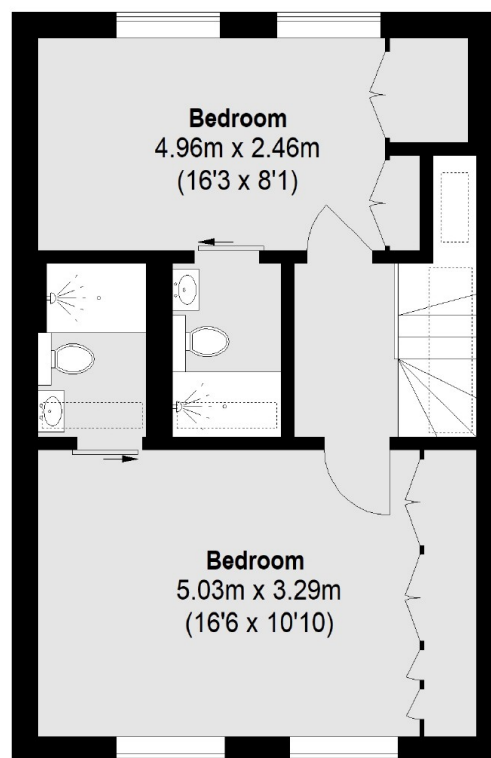
# Windmill Street, London, W1T



**Second Floor**



**Third Floor**



**Fourth Floor**

Total area (approx.): 92.12 sq. m (991 sq. ft)