



Gresse Street, W1T

£500,000

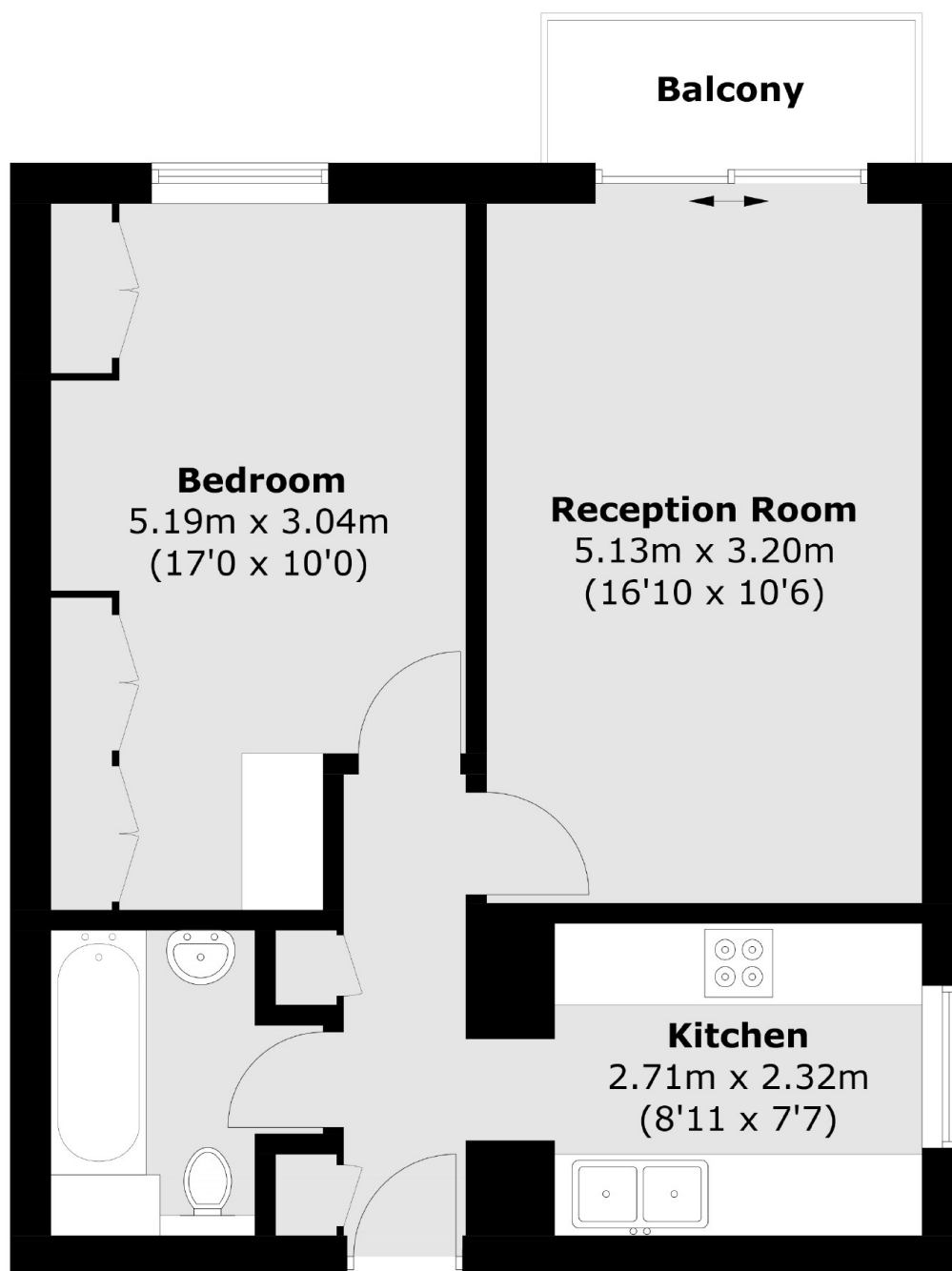
A one bedroom apartment with a balcony. Situated on the seventh floor of a purpose built block a short distance from Tottenham Court Road Station.

Located in a quiet no through street set behind Oxford Street and Tottenham Court Road. The amenities of the West End are accessible on foot.

Features

Purpose Built Apartment
Reception-Dining Room
Galley Kitchen
Balcony
Two Lifts
Lease To 2202

Gresse Street, London, W1T



Total area (approx.): 49.1 sq. m (528.5 sq. ft)
Balcony: 2.8 sq. m (30.1 sq. ft)