



Goodge Street, W1T

£885,000

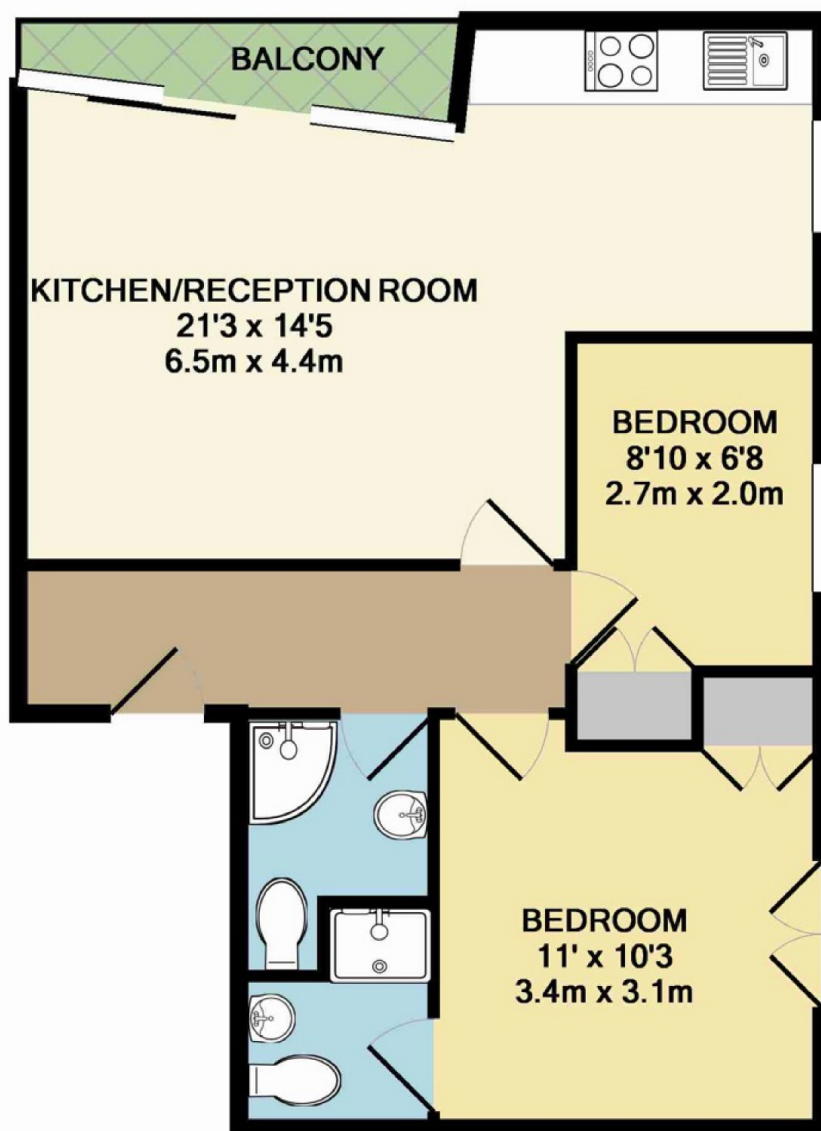
This two bedroom, two bathroom apartment is on the first floor (with lift) of a purpose built block in the heart of Fitzrovia.

Goodge Street is within close proximity of Charlotte Street, Oxford Street and Bond Street. There are multiple Underground Stations nearby including Goodge Street and Oxford Circus and mainline railway stations at Euston and King's Cross St. Pancras.

Features

- Two Bedrooms
- First Floor
- Balcony
- En Suite
- Lease 125 From 1989
- Lift

Goodge Street, London, W1T



TOTAL APPROX. FLOOR AREA 603 SQ.FT. (56.0 SQ.M.)

Whilst every attempt has been made to ensure the accuracy of the floor plan contained here, measurements of doors, windows, rooms and any other items are approximate and no responsibility is taken for any error, omission, or mis-statement. This plan is for illustrative purposes only and should be used as such by any prospective purchaser. The services, systems and appliances shown have not been tested and no guarantee as to their operability or efficiency can be given

Made with Metropix ©2015

Dexters

Fitzrovia & Covent Garden
66 Goodge Street
London
W1T 4NG
Sales
020 7067 2401

Energy Rating: D. We aim to make our particulars both accurate and reliable. However they are not guaranteed; nor do they form part of an offer or contract. If you require clarification on any points then please contact us, especially if you're traveling some distance to view. Please note that appliances and heating systems have not been tested and therefore no warranties can be given as to their good working order.

 **RICS** | Regulated
Estate Agent
and Letting Agent

dexters.co.uk