



Berners Street, WIT

£1,100,000

Dexters



Berners Street, W1T

A two double bedroom apartment in an Edwardian building moments from Tottenham Court Road. Located on a corner aspect with a bright dual aspect living area.

Berners Mansions is located in Fitzrovia, home to a host of art galleries, boutique retail shops and 5* hotels. The area benefits from some of London's best restaurants with Charlotte Street being a world class destination for London diners.

Please note certain photographs are virtually staged.

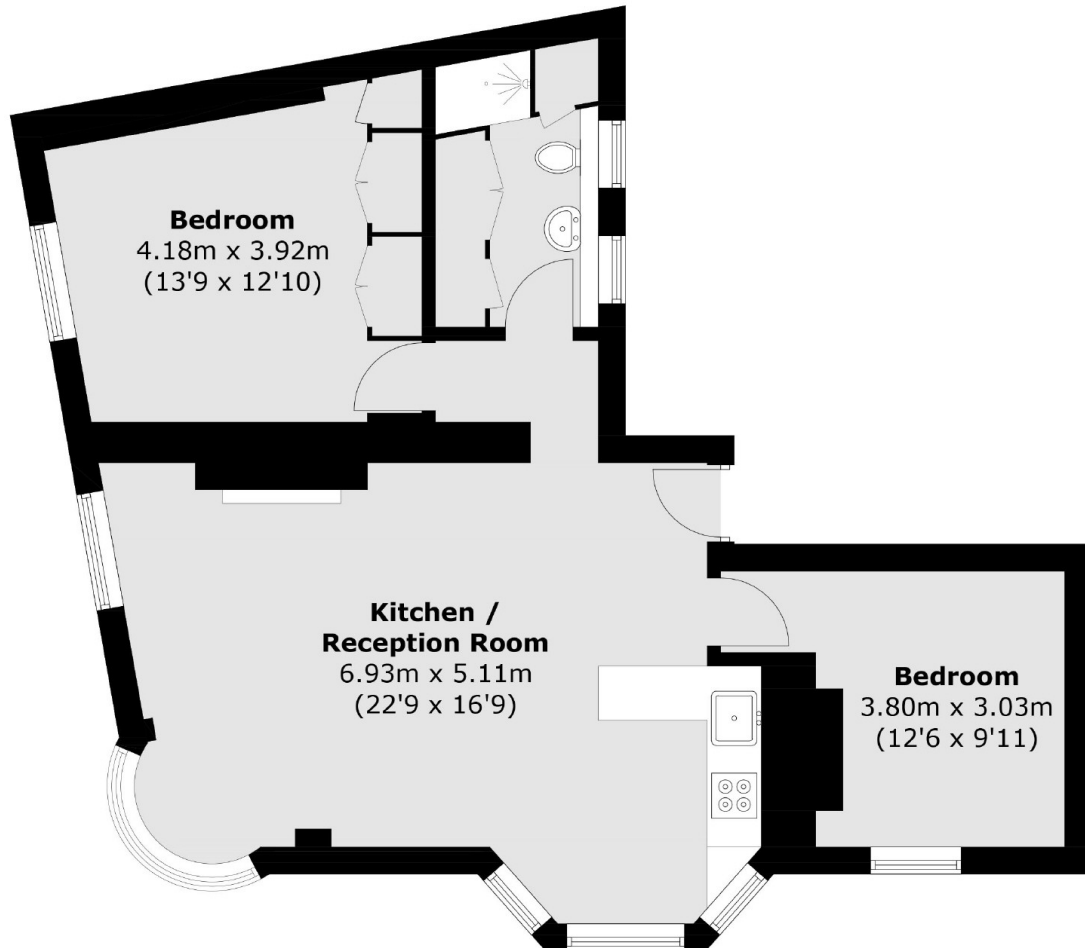
Oxford Street, Goodge Street and Tottenham Court Road stations are all close by.

Features

- Two Double Bedrooms
- Dual Aspect Reception
- Kitchen
- Lift
- Bathroom
- Lease To 2144



Berners Street, London, W1T



Total area (approx.): 65.8 sq. m (708.3 sq. ft)