



Cleveland Street, W1T
£450,000

Dexters



Cleveland Street, W1T

A bright loft style apartment located in Cleveland Street. The historic street is home to London's landmark BT Tower and a notable former resident of the street was the writer Charles Dickens. Conveniently located for the universities and colleges of the area.

The walk up apartment is located on the fourth floor of a period building and comprises a reception room with a vaulted ceiling with ladder access to a mezzanine area which could be utilised as occasional sleeping or recreation space. There is a double bedroom and a bright modern kitchen and bathroom.

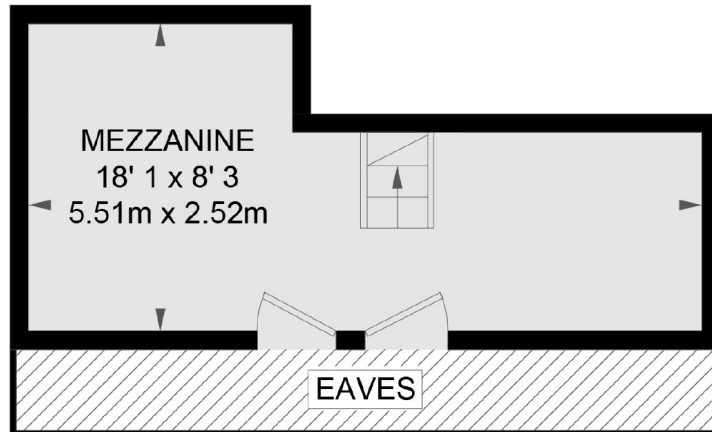
Walkable to Marylebone High Street, Soho and the West End, the area is well served by many stations including Great Portland Street, Goodge Street, Oxford Circus and Tottenham Court Road with the future crossrail links to the City, Docklands and London Heathrow.

Features

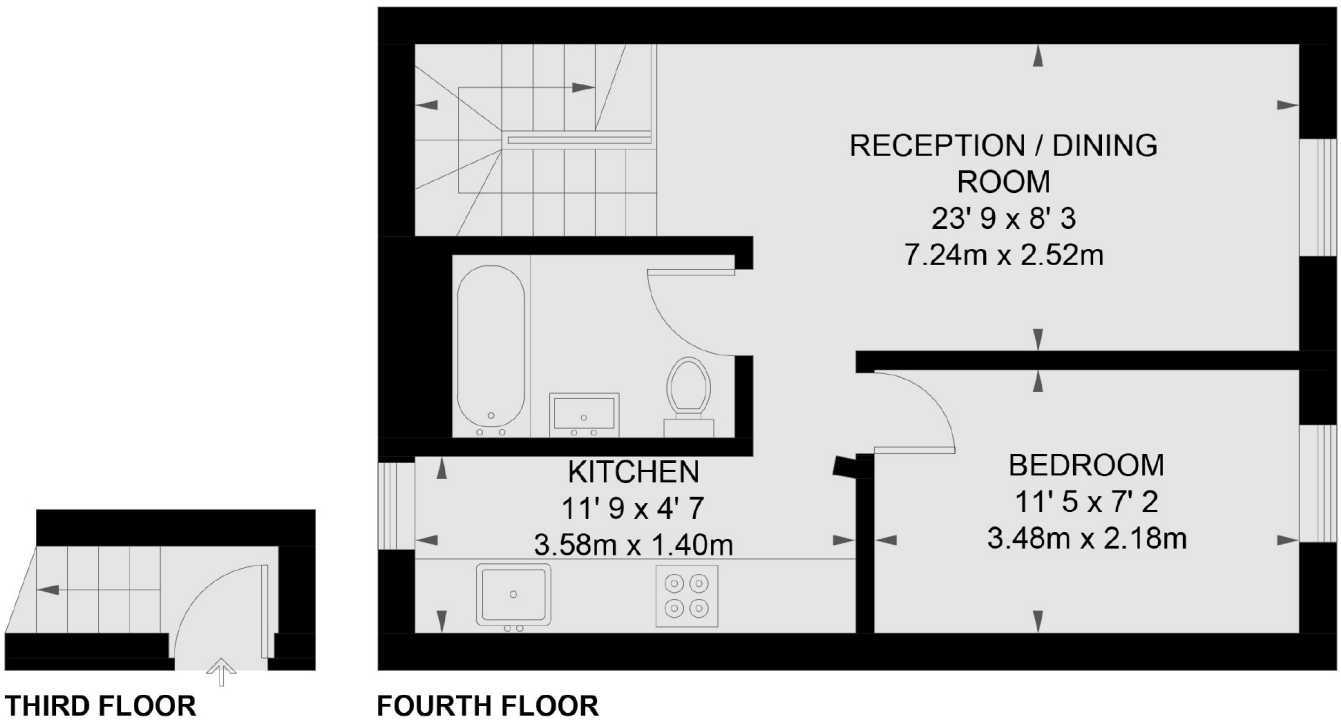
- Top Floor
- Bedroom
- Reception
- Bathroom
- Kitchen
- Chain Free



Cleveland Street, London, W1T



MEZZANINE



THIRD FLOOR

FOURTH FLOOR

TOTAL APPROX. FLOOR AREA 511 SQ. FT. (47.5 SQ. M.)