

GATTI HOUSE  
STRAND

Dexters



## Gatti House Strand

---

Prominently located on the famous strand, a grand  
first floor apartment steeped in history





Steeped in history, a grand first floor apartment with over 1,800 sq. ft of living space and ideal for entertaining both friends and family.

Formerly the main dining room of the Adelphi Theatre Restaurant, the property also benefits from a large terrace and balcony.

With ceilings up to four metres high, the main reception has a feature fireplace, ornate plasterwork and three full height glass double doors, opening onto an ornamental balcony.

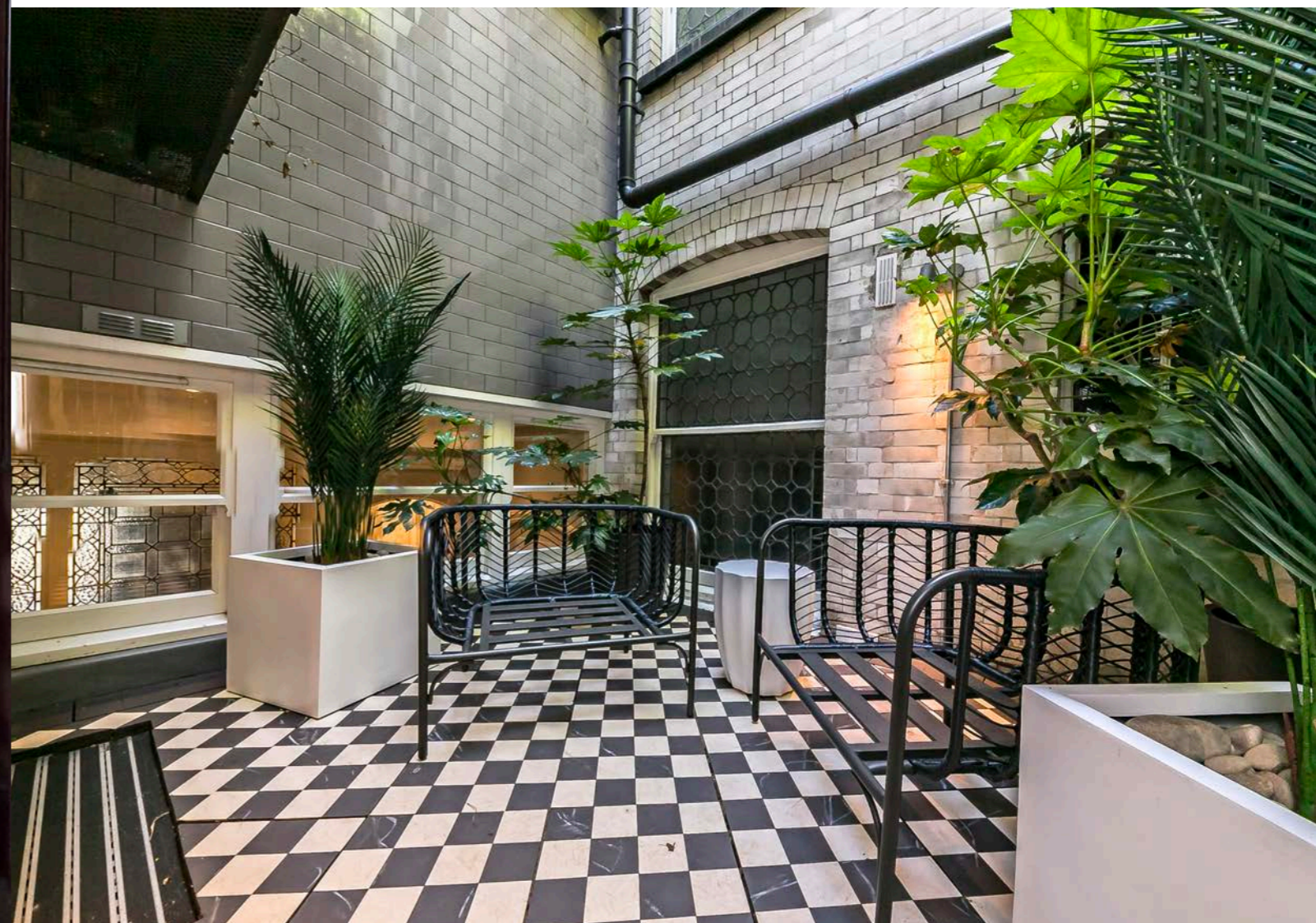
Once the original Victorian servery, the separate designer kitchen/breakfast room has a central island with a breakfast bar, ornate plasterwork and diamond pattern marble flooring. There are two luxurious bedroom suites, both with en suite facilities, and a generous terrace.

Located adjacent to the Adelphi Theatre in the heart of the famous Strand, there is an abundance of local shops and amenities on your doorstep including Charing Cross station with its multiple transport rail and underground links.

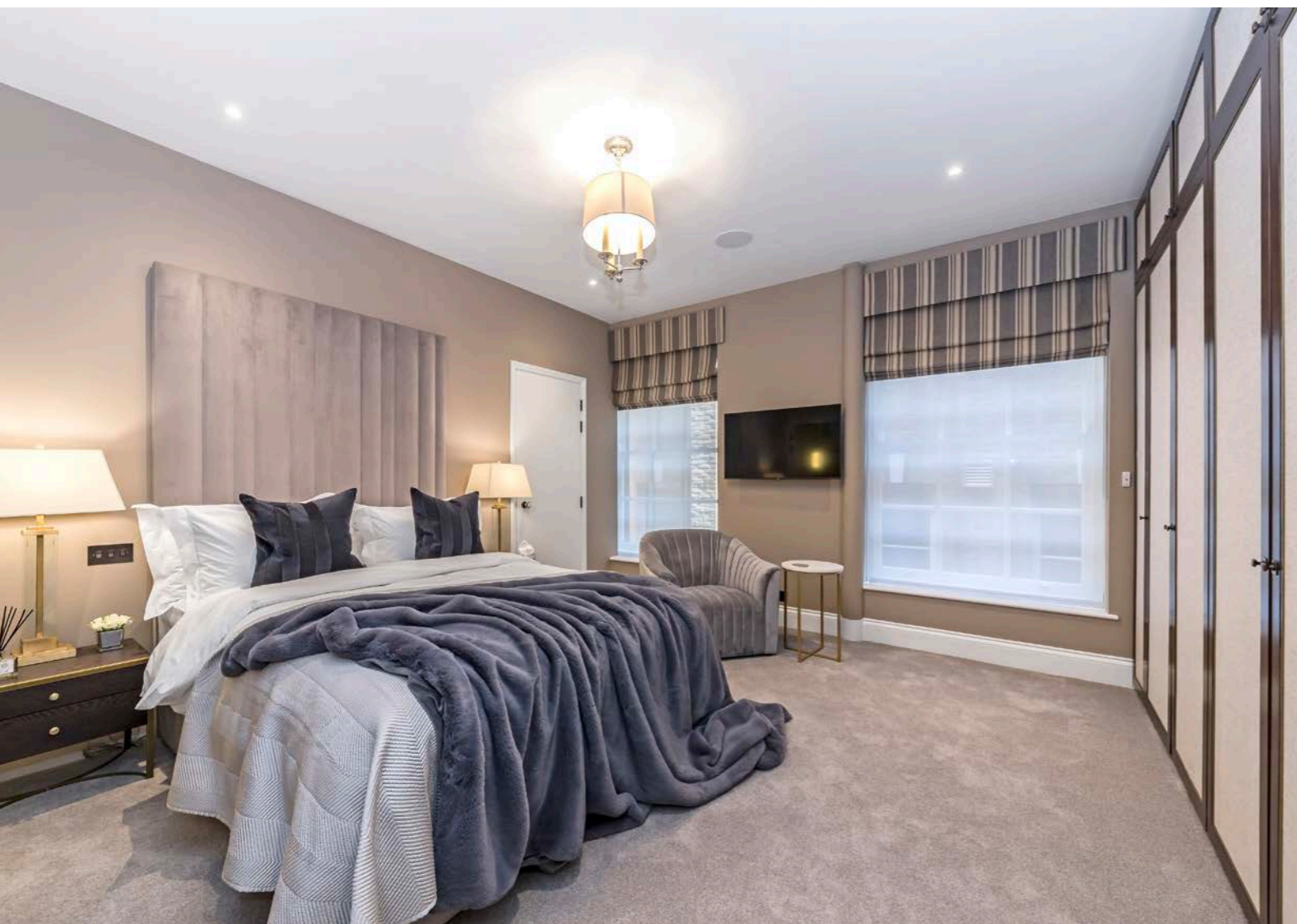
- Two Bedrooms
- Two Bathrooms
- High Ceilings
- Private Terrace
- Private Balcony
- Original Period Features
- Interior Designed
- Over 1,800 Sq. Ft







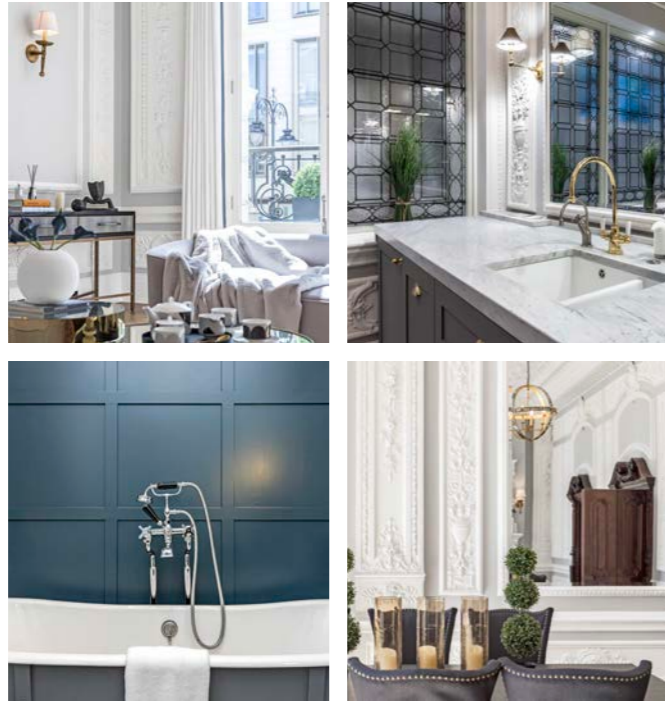




TOTAL APPROX. FLOOR AREA 1,818 SQ. FT (168.91 SQ. M)

Energy Rating: C. We aim to make our particulars both accurate and reliable. However they are not guaranteed; nor do they form part of an offer or contract. If you require clarification on any points then please contact us, especially if you're traveling some distance to view. Please note that appliances and heating systems have not been tested and therefore no warranties can be given as to their good working order.





Price on application

Dexters Covent Garden  
020 7590 9590

Dexters

[dexters.co.uk](http://dexters.co.uk)