



Neal Street, WC2H

£649,950

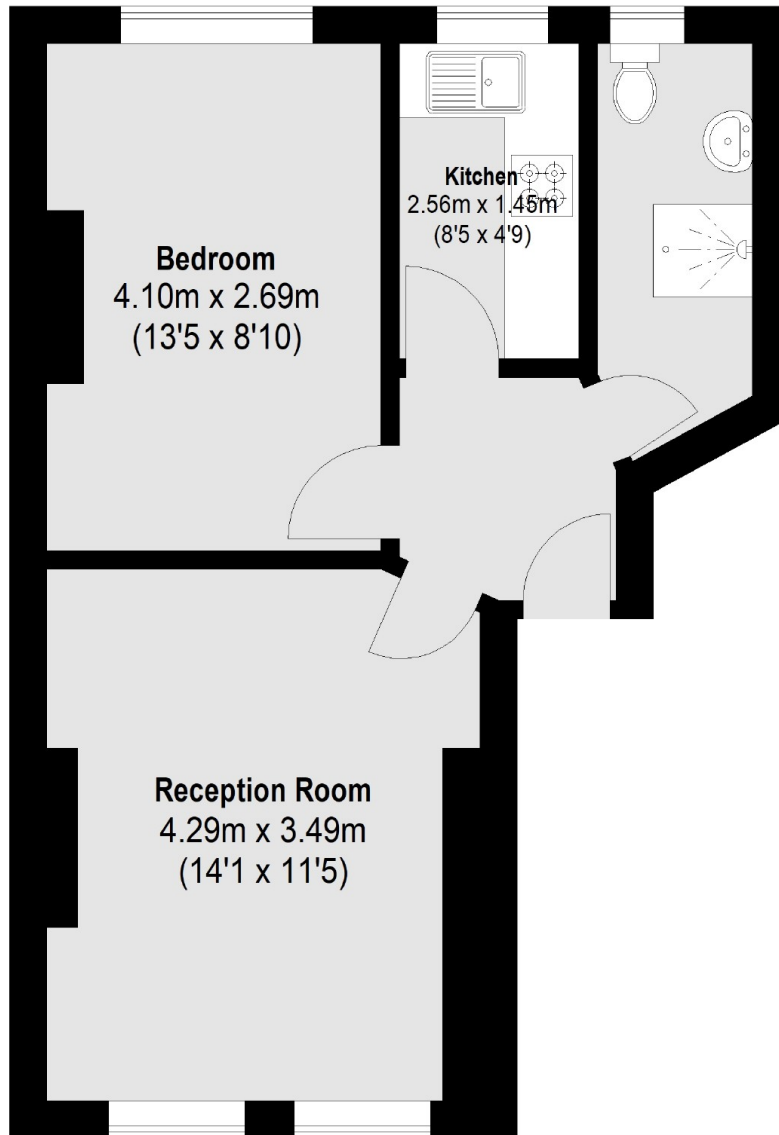
A one bedroom apartment situated in the Seven Dials area of Covent Garden. Located within walking distance of the Piazza, Opera House and Theatreland.

The closest stations are Covent Garden and Tottenham Court Road with access to the Elizabeth Lines direct links to London Heathrow.

Features

- One Bedroom
- Third Floor
- Reception
- Bedroom
- Kitchen
- Chain Free

**Neal Street,
London, WC2H**



Third Floor

Total area (approx.): 38.34 sq. m (413 Sq. ft)