



## Whetstone Park, WC2A

£1,300 Per week

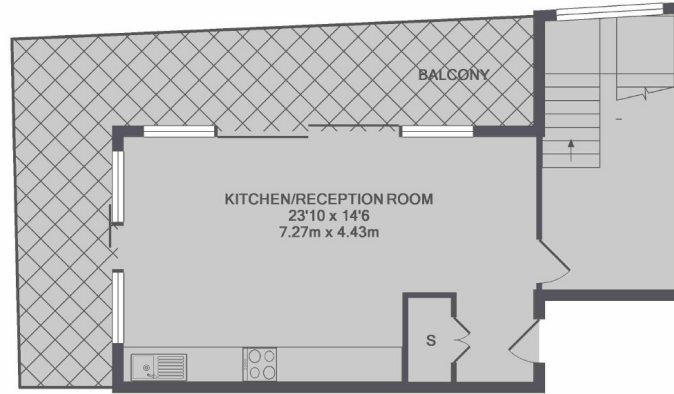
A modern and spacious split level three bedroom penthouse within a new development in the heart of Holborn with wood floors throughout and direct lift access to both floors.

Whetstone Park is situated off High Holborn next to Lincoln's Inn Fields within central Holborn. The property is within easy reach to Holborn's restaurants, bars and shopping.

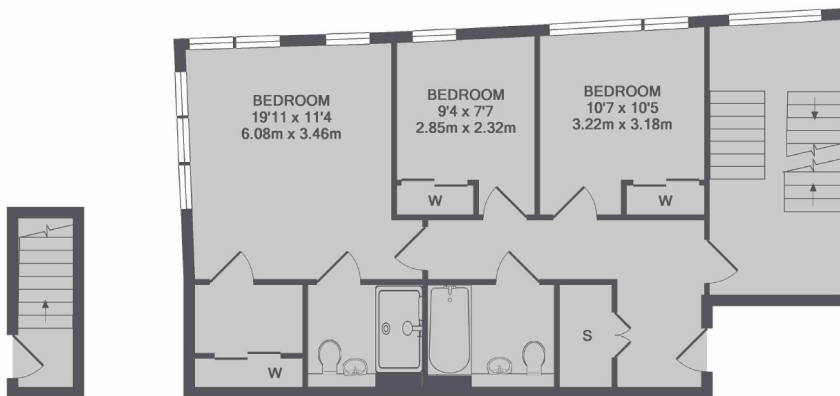
### Features

- Open-Plan Kitchen
- Split Level
- Centrally Located
- Wood Floors
- Lift Access
- Penthouse

# Whetstone Park, London, WC2A



6TH FLOOR



4TH FLOOR

5TH FLOOR

TOTAL APPROX. FLOOR AREA 1249 SQ.FT. (116.1 SQ.M.)