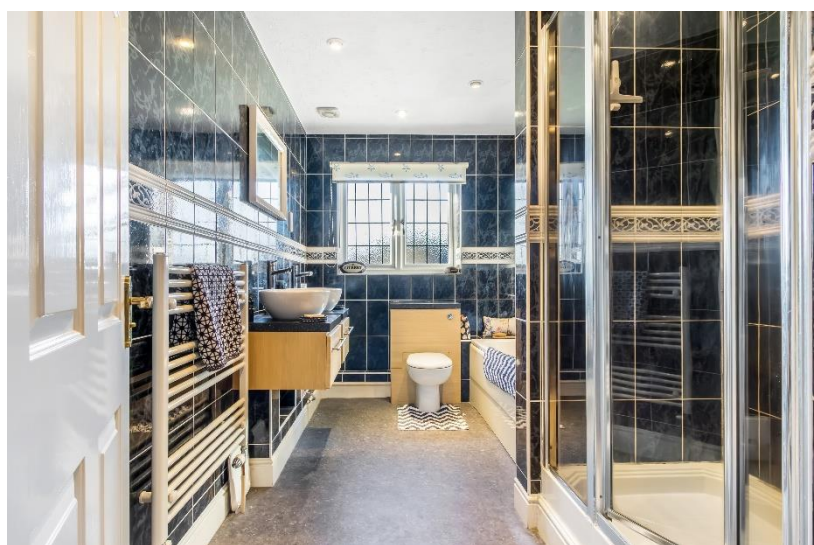




Richardson Crescent, Cheshunt



- IMPRESSIVE 5 BEDROOM DETACHED FAMILY HOME
- BUILT BY CHARLES CHURCH
- JUST OVER 2,700 SQ FT OF ACCOMMODATION
- FOUR GENEROUS RECEPTION ROOMS

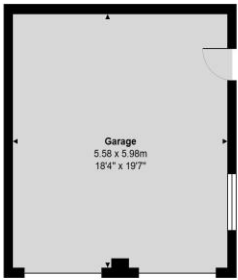


- KITCHEN / BREAKFAST ROOM WITH UTILITY
- TWO EN-SUITE BEDROOMS PLUS FAMILY BATHROOM
- CUL-DE-SAC LOCATION
- DETACHED DOUBLE GARAGE & OFF-STREET PARKING

Richardson Crescent
Cheshunt EN7 6WZ

A fabulous opportunity to acquire this impressive five-bedroom family home, built by Charles Church, and positioned in one of the most sought after locations in the area. Extending to just over 2,700 sq ft, the property offers generous and well balanced accommodation, ideal for modern family living. The ground floor comprises a welcoming and spacious entrance hallway, four reception rooms including a living room, dining room, study and TV/family room, along with a well-appointed kitchen/breakfast room, separate utility room and cloakroom. To the first floor are five well proportioned bedrooms. The principal bedroom benefits from a large en-suite bathroom, while the guest bedroom features its own en-suite shower room, complemented by a modern family bathroom. Externally, the property enjoys a delightful rear garden with a decking area, perfect for outdoor entertaining. Further benefits include a detached double garage and off street parking.

Richardson Crescent is a highly sought after residential address in West Cheshunt, popular with families and professionals due to its peaceful, leafy setting and excellent connectivity. The area is well served by highly regarded local schools, nearby amenities including the Brookfield Centre and open green spaces, while Cuffley station is around 2 miles away, offering convenient rail links into London. Excellent road connections to the A10 and M25 further enhance accessibility, making this an ideal location for commuters seeking a quality suburban lifestyle



Richardson Crescent, Cheshunt, EN7 6WZ
Total Area: 257.5 m² ... 2772 ft²
All measurements are approximate and for display purposes only