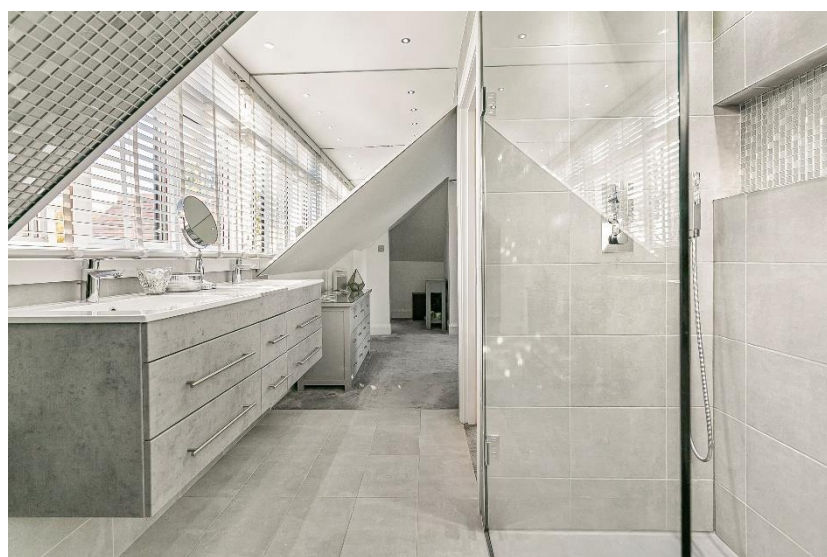




Pine Grove, Brookmans Park



- 6 BEDROOMS
- 4 RECEPTION ROOMS
- MULTIFUNCTIONAL OUTHOUSE
- 5 BATHROOMS
- 3,809 SQ FT DOUBLE-FRONTED PROPERTY
- EXPANSIVE LANDSCAPED GARDEN

Pine Grove
Brookmans Park AL9 7BS

Situated in the highly sought-after Brookmans Park, this exceptional six-bedroom detached family home spans an impressive 3,809 sq ft. With a charming village atmosphere and a peaceful semi-rural setting, it stands as one of Hertfordshire’s finest locations. The ground floor begins with a welcoming reception hallway, leading to a modern open-plan kitchen and family room, complemented by a lounge, sitting room, utility room, guest cloakroom, and a stunning garden room, ideal for both relaxing and entertaining. On the first floor, there are five spacious bedrooms, four of which are accompanied by en-suite bathrooms, offering both comfort and convenience. The top floor hosts the luxurious principal suite, featuring a dressing area, en-suite bathroom, and a Velux balcony with picturesque views of the beautifully landscaped rear garden. The rear garden is a true highlight, featuring a spacious paved seating area perfect for outdoor dining and entertaining. It is surrounded by well-kept lawns, adding to its charm. At the far end of the garden, there’s a versatile studio and office space, offering flexibility for work or leisure. The front of the property provides ample parking for multiple vehicles, along with easy access to the garage.



Score	Energy rating	Current	Potential
92+	A		
81-91	B		81 B
69-80	C	72 C	
55-68	D		
39-54	E		
21-38	F		
1-20	G		