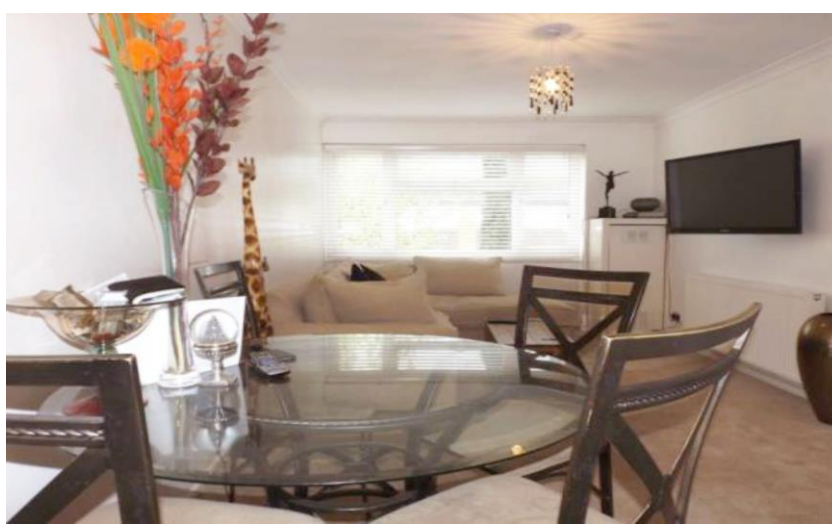
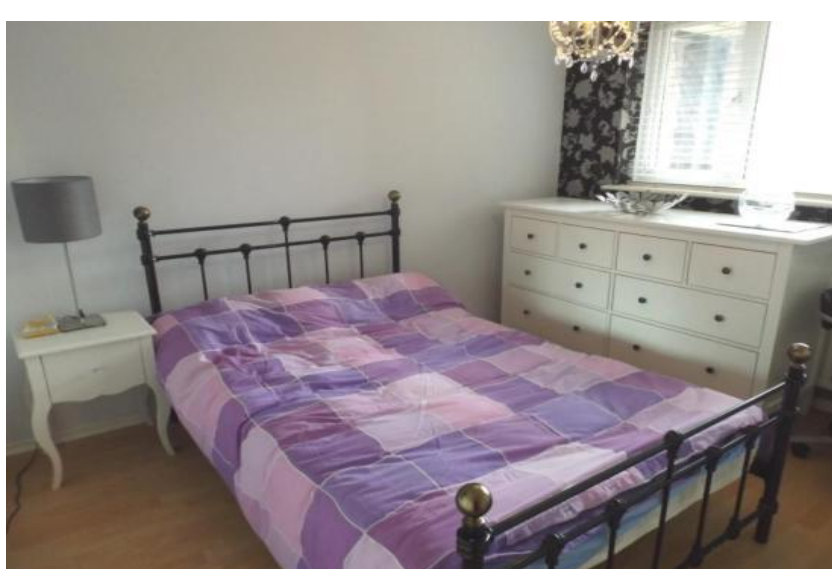




## Maynard Place, Cuffley



- EXCELLENT LOCATION
- 2 DOUBLE BEDROOMS
- FIRST FLOOR APARTMENT
- OPEN PLAN LIVING AREA
- LONG LEASE
- CHAIN FREE





Maynards Place, Cuffley

A well-sized two double bedroom first floor apartment situated in the heart of Cuffley village. This conveniently located property offers an open plan lounge with large windows, modern fitted kitchen incorporating integrated appliances, two double bedrooms, fully tiled bathroom and hallway storage. Excellently located for the shops, restaurants and mainline station. The property also offers resident only parking.



Maynard Place

Approximate Gross Internal Area = 62.4 sq m / 672 sq ft

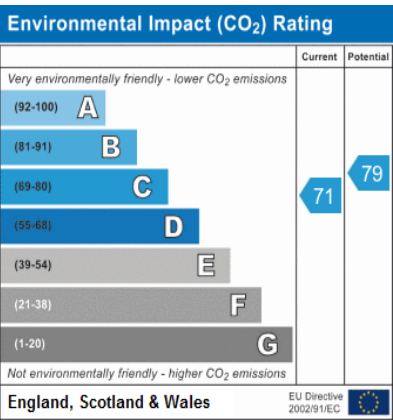
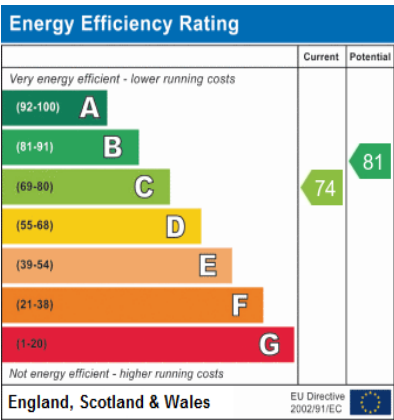
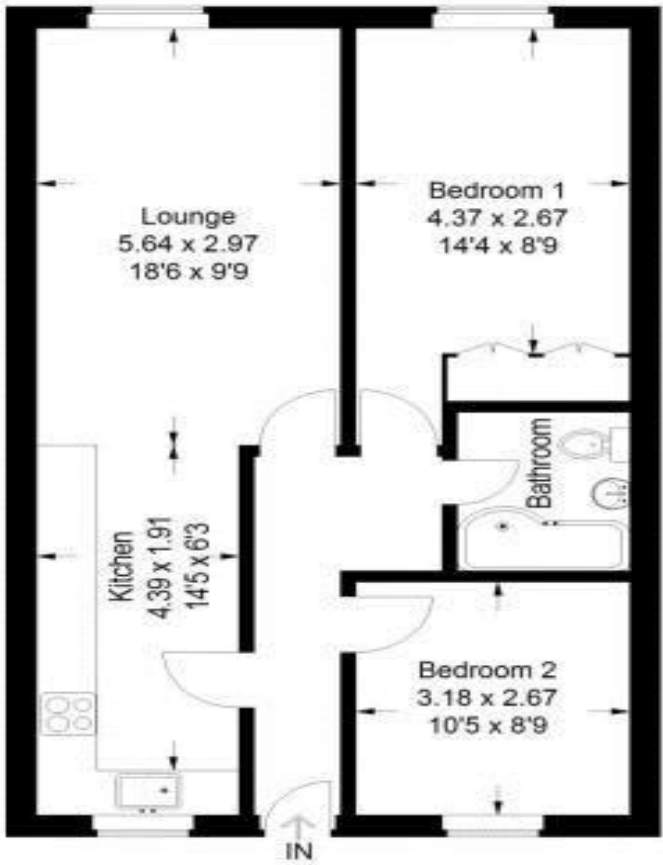


Illustration for identification purposes only, measurements are approximate, not to scale.  
FloorplansUsketch.com © 2015 (ID169954)