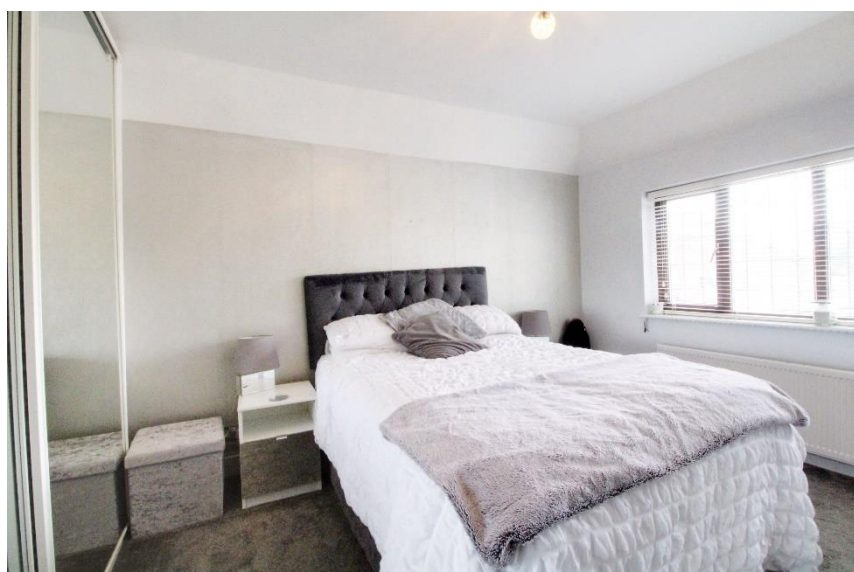
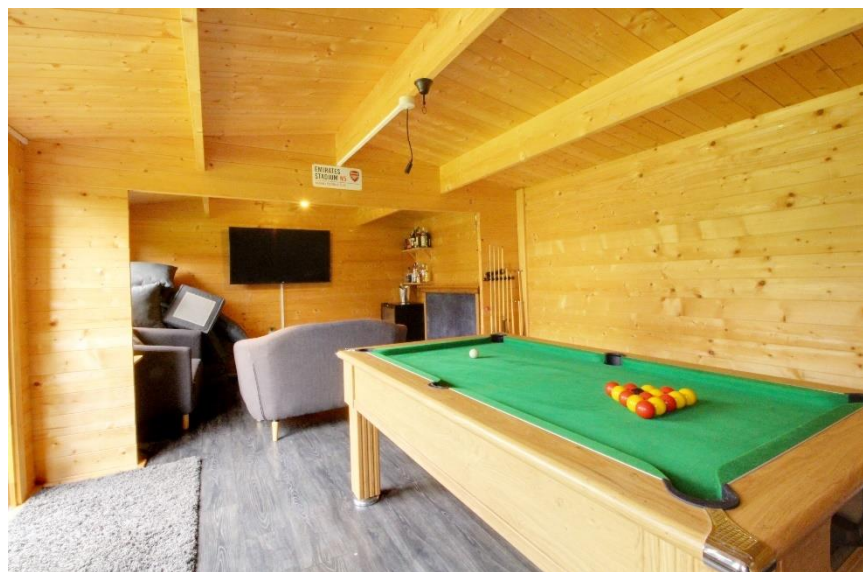




Northaw Road East, Cuffley



- WALKING DISTANCE TO SCHOOL AND STATION
- CLOSE TO PARK/TENNIS/FOOTBALL CLUB
- LARGE KITCHEN/FAMILY ROOM
- 2 RECEPTION ROOMS
- 4 BEDROOMS
- MASTER BEDROOM WITH EN-SUITE SHOWER ROOM
- LARGE REAR GARDEN
- HOME OFFICE/GAMES ROOM



# Northaw Road East Cuffley EN6 4LY

A 4 bedroom detached family home showing in excellent decorative order throughout and conveniently situated for Cuffley school, village and train station. The property is also situated close to Cuffley park, football club and tennis club. The accommodation consists of: Entrance hallway, downstairs wc, kitchen/family room, living room, study and utility room. Upstairs there are 4 bedrooms with the master bedroom occupying an en-suite shower room, there is a further family bathroom. Large rear garden and a home office/games room, side access and plenty of off street parking.

Cuffley village offers lots of shopping facilities, doctor and dentist surgeries. The train station allows direct access to London Kings Cross and Moorgate stations via Finsbury Park. Leisure pursuits are well catered for with a tennis club and Northaw Great Woods for countryside walks. Local schooling is close by from nurseries to Cuffley primary school and excellent private and state secondary schools are within easy reach.



Northaw Road East, Cuffley, Potters Bar, EN6 4LY

Total Area: 183.9 m² ... 1980 ft²

All measurements are approximate and for display purposes only

Score	Energy rating	Current	Potential
92+	A		
81-91	B		
69-80	C		79 C
55-68	D	65 D	
39-54	E		
21-38	F		
1-20	G		