



Smarts Green, Cheshunt

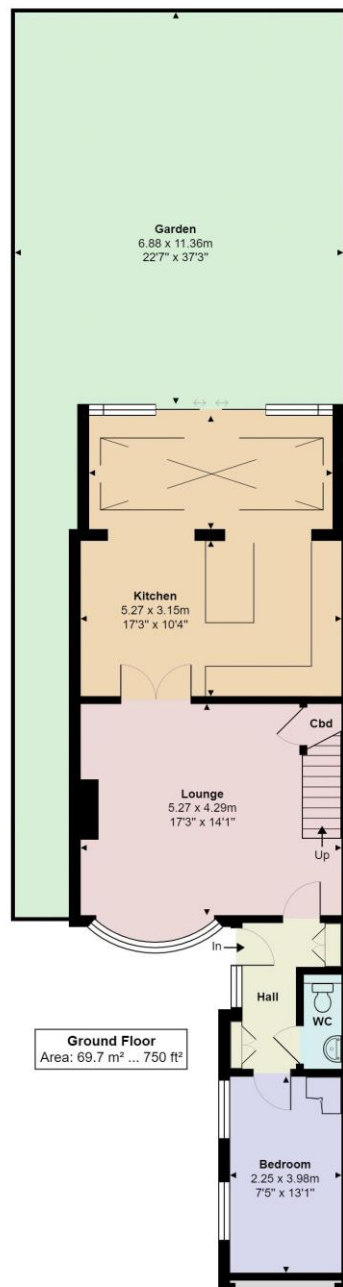


- FOUR BEDROOMS
- OFF STREET PARKING
- EXCELLENT DECORATIVE ORDER THROUGHOUT
- LARGE KITCHEN BREAKFAST ROOM
- GROUND FLOOR W/C
- CLOSE TO ALL AMENITIES
- CLOSE TO GOOD SCHOOLING

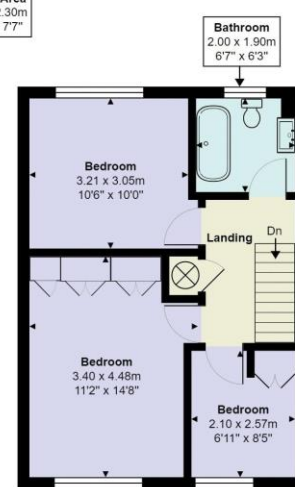


We are pleased to offer this immaculately presented 4 bedroom end of terrace house located in West Cheshunt. The property has a bright and airy feel and benefits from a large kitchen/breakfast room with doors that open up to the garden, there is a spacious living room and downstairs WC. The garage has been converted into a fourth bedroom. Upstairs there are 3 bedrooms and a family bathroom. To the rear is a patio area with steps up to laid lawn. Driveway and off-street parking to the front of the property.

Ideally situated for access to both Cheshunt and Cuffley station with their direct links to London Liverpool Street and London Moorgate. There is an excellent choice of schooling in the local area including Flamstead End JMI and Goffs Academy. Shops and local amenities are close by at the Brookfield Farm shopping centre and there is an abundance of countryside and woodland walks to be enjoyed just a short distance from the property.



Score	Energy rating	Current	Potential
92+	A		
81-91	B		
69-80	C		79 C
55-68	D	60 D	
39-54	E		
21-38	F		
1-20	G		



First Floor
Area: 41.3 m² ... 445 ft²

Ground Floor
Area: 69.7 m² ... 750 ft²



Smarts Green, Cheshunt, EN7 6BA
Total Area: 111.0 m² ... 1195 ft² (excluding garden)
All measurements are approximate and for display purposes only