



Old Park Ridings, Grange Park



- POTENTIAL TO EXTEND STPP
- PREMIER LOCATION
- 4 BEDROOMS
- 3 RECEPTION ROOMS



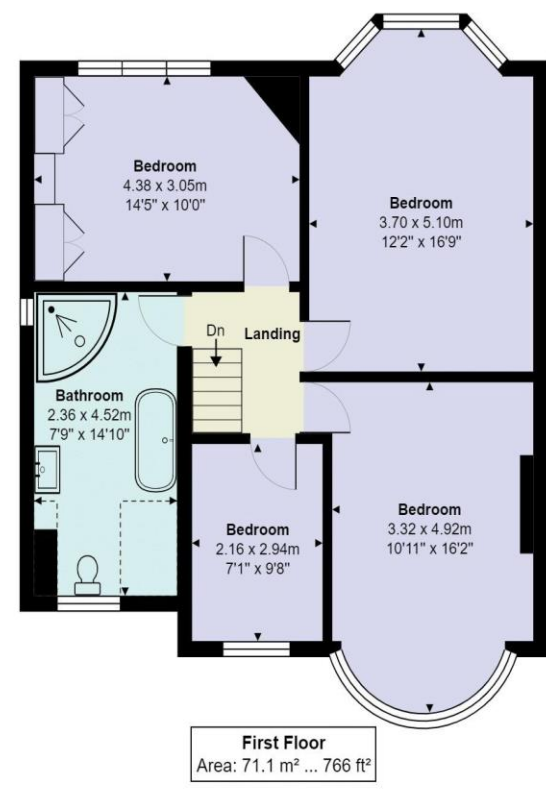
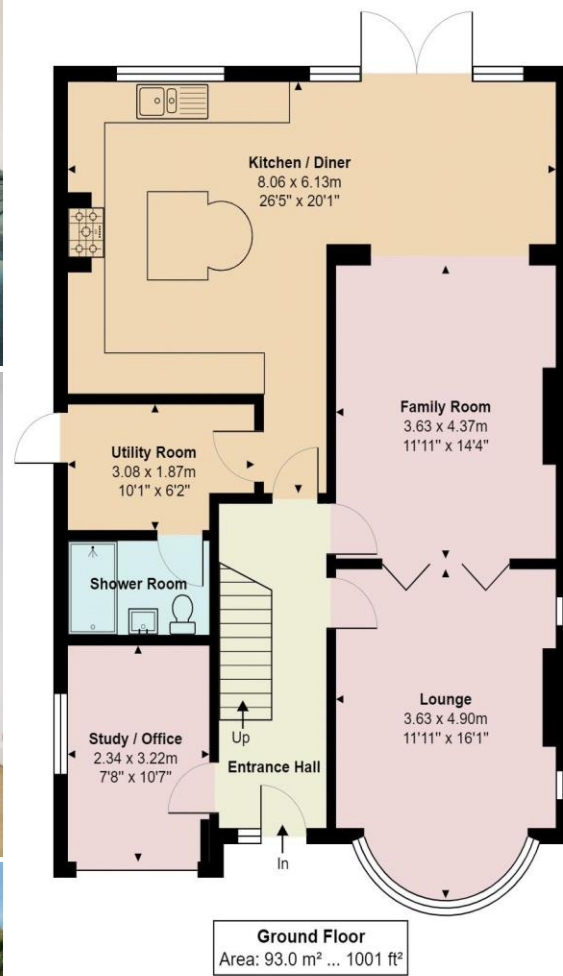
- BATHROOM
- SHOWER ROOM
- GARAGE
- CLOSE TO SCHOOLS

Old Park Ridings

Grange Park N21 2ET

A delightful 4 bedroom detached family home set on the much sought after location of Old Park Ridings. The property offers much scope for further development and had plans to extend the rear and convert the loft which would need to be re submitted. The accommodation consist of: Entrance hallway, study, kitchen breakfast/family room, living room, dining room, utility room and shower room. Upstairs there are 4 bedrooms and a large bathroom with separate shower. Exterior, patio area with steps down to a good size rear garden, side access. Frontage there is a driveway with parking for several cars and a garage.

Grange Park local shops, restaurants, buses and railway station are all within walking distance.



Old Park Ridings, Southgate, N21 2ET

Total Area: 164.1 m² ... 1767 ft²

All measurements are approximate and for display purposes only

Score	Energy rating	Current	Potential
92+	A		
81-91	B		86 B
69-80	C		
55-68	D	63 D	
39-54	E		
21-38	F		
1-20	G		