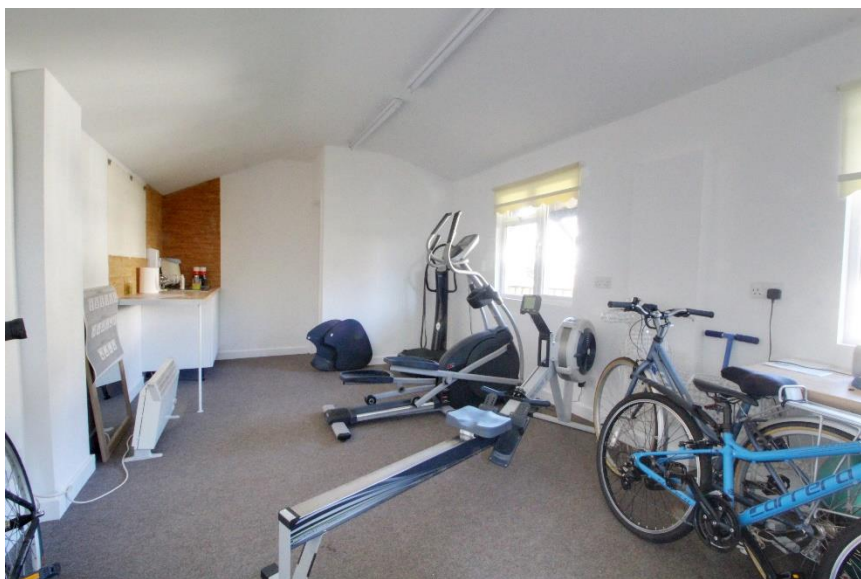




Tolmers Road, Cuffley



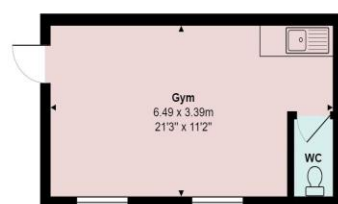
- GATED PROPERTY
- 3 RECEPTION ROOMS
- DOWN STAIRS SHOWER ROOM
- 5 BEDROOMS
- 2 EN-SUITES
- FAMILY BATHROOM
- BEAUTIFULLY PRESENTED
- HOME OFFICE



Tolmers Road
Cuffley EN6 4JP

We are delighted to have been instructed as sole agents on this fabulous 5 bedroom detached gated home set in the prestigious location of Tolmers Road. The property is set at the end of the road close to Homewood and benefits from no passing traffic. The impressive accommodation consists of: Entrance hallway with intercom system, living room with log burner, dining room, kitchen breakfast room, tv room, utility room, down stairs shower room with wc, the garage has had part of it turned into a study area with a further large storage area. Upstairs there are 5 bedrooms with the master having a large en-suite bathroom with separate double shower, guest bedroom with en-suite shower room and a family bathroom. There is an outhouse which is set up to be used as a home office with its own kitchenette and wc. Southwest facing rear garden and side access to both sides, off street parking for several cars.

Cuffley village offers lots of shopping facilities, a GP and dental practices and the train station allows direct access to London Moorgate via Finsbury Park and Highbury & Islington. Leisure pursuits are well catered for with a tennis club and Northaw Great Woods for countryside walks. There is an excellent selection of schools nearby including Queenswood, Stormont, Lochinver House and Haileybury.



Tolmers Road, Cuffley, Potters Bar, EN6 4JP

Total Area: 241.8 m² ... 2603 ft²

All measurements are approximate and for display purposes only