



Doverfield, Goffs Oak



- CHAIN FREE
- QUIET CUL-DE-SAC LOCATION
- SHORT STROLL TO SHOPS
- 3 BEDROOMS
- LARGE GARDEN
- GARAGE
- OFF STREET PARKING
- RARE TO MARKET

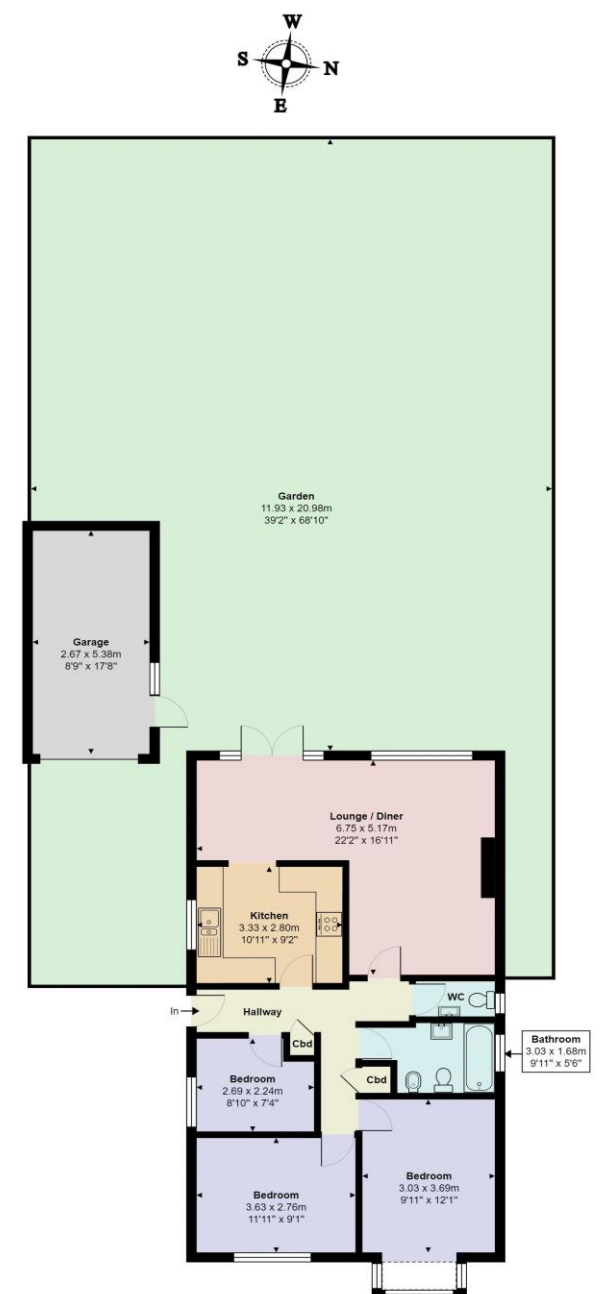
Doverfield
Goffs Oak EN7 5EL

****QUIET CUL-DE-SAC LOCATION** 3 BEDROOMS** RARE TO THE MARKET** CHAIN FREE**** A beautifully presented 3 bedroom detached bungalow set in the popular cul-se-sac location of Doverfield. The property is situated within a short stroll of Goffs Oak village. Accommodation consists of: Entrance hallway, kitchen, L shaped living room/dining room, 3 bedrooms, bathroom and separate wc. The property has an excellent size rear garden with a patio and summer house. There is side access to both sides, a garage and off street parking plus a front garden. Offered chain free.

Situated in a central location in the leafy village of Goffs Oak. There is a village pub and many different shops which include a co-op, Indian restaurant and hairdressers. There is good access to road networks including the A10 and M25. Cuffley over ground station is a short distance away which services London's King Cross and Moorgate.



Score	Energy rating	Current	Potential
92+	A		
81-91	B		82 B
69-80	C		
55-68	D	59 D	
39-54	E		
21-38	F		
1-20	G		



Doverfield, Goffs Oak, EN7 5EL
Total Area: 96.9 m² ... 1043 ft² (excluding garden)
All measurements are approximate and for display purposes only