



Northaw Road East, Cuffley



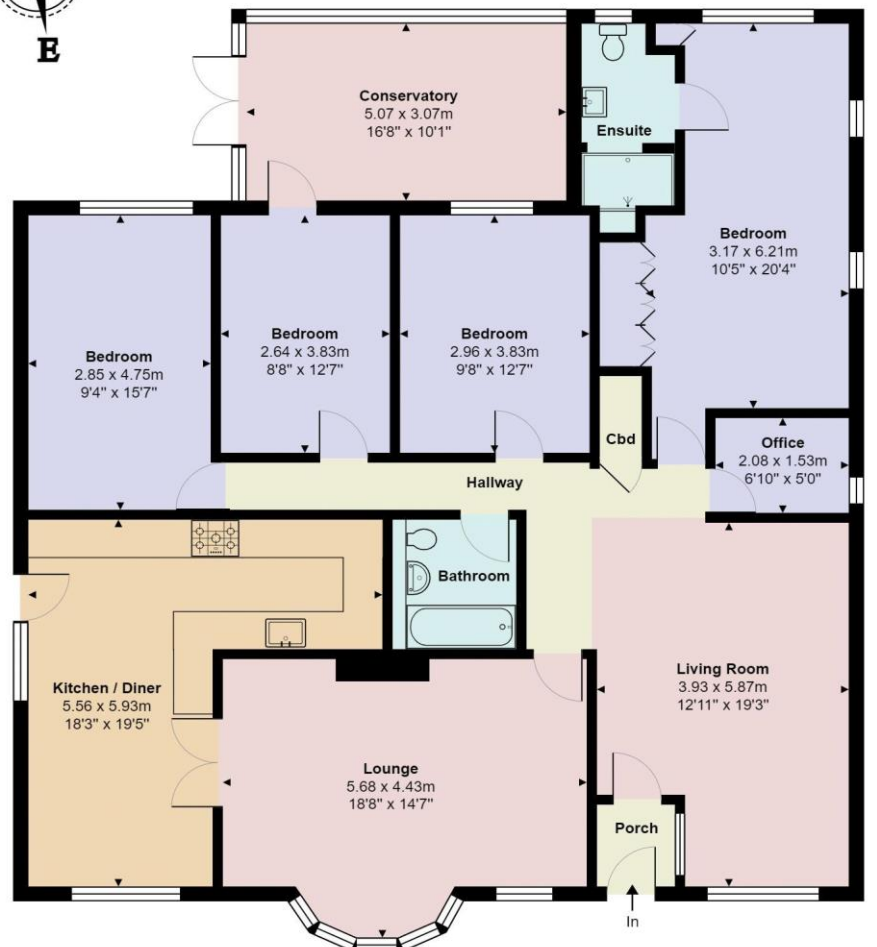
- APPROACHING 1900 SQ FEET
- 4 BEDROOMS
- 4 RECEPTION ROOMS
- 2 BATHROOMS
- BEAUTIFULLY PRESENTED
- WEST FACING GARDEN
- HUGE FRONTAGE
- WALKING DISTANCE TO VILLAGE/SCHOOL/STATION

Northaw Road East

Cuffley EN6 4LL

A beautifully presented and extremely spacious 4 bedroom detached bungalow located on the doorstep of Cuffley village providing easy access to Cuffley train station and school. The impressive home boast almost 1900 sq foot of accommodation which includes, 4 receptions, living room, dining room, study, conservatory and a large kitchen/breakfast room. The large master bedroom has an en-suite shower room, 3 further bedrooms and a family bathroom. There is a good size mature westerly facing garden, huge frontage with an abundance of off street parking.

Cuffley village offers lots of shopping facilities, doctors and dentist surgeries and the train station allows direct access to London Kings Cross and Moorgate stations via Finsbury Park. Leisure pursuits are well catered for with a tennis club and Northaw Great Woods for countryside walks. Local schooling is close by from nurseries to Cuffley primary school and excellent private and state secondary schools are within easy reach.



Score	Energy rating	Current	Potential
92+	A		
81-91	B		82 B
69-80	C	72 C	
55-68	D		
39-54	E		
21-38	F		
1-20	G		



Northaw Road East, Cuffley, Potters Bar, EN6 4LL

Total Area: 169.3 m² ... 1823 ft²
All measurements are approximate and for display purposes only