



The Ridgeway, Northaw



- PRESTIGIOUS LOCATION
- 6 BEDROOMS
- 4 BATHROOMS
- 3 RECEPTION ROOMS
- STUNNING REAR GARDEN
- VIEWS OVER LONDON SKYLINE
- GATED ENTRANCE
- BACKING ON TO FIELDS

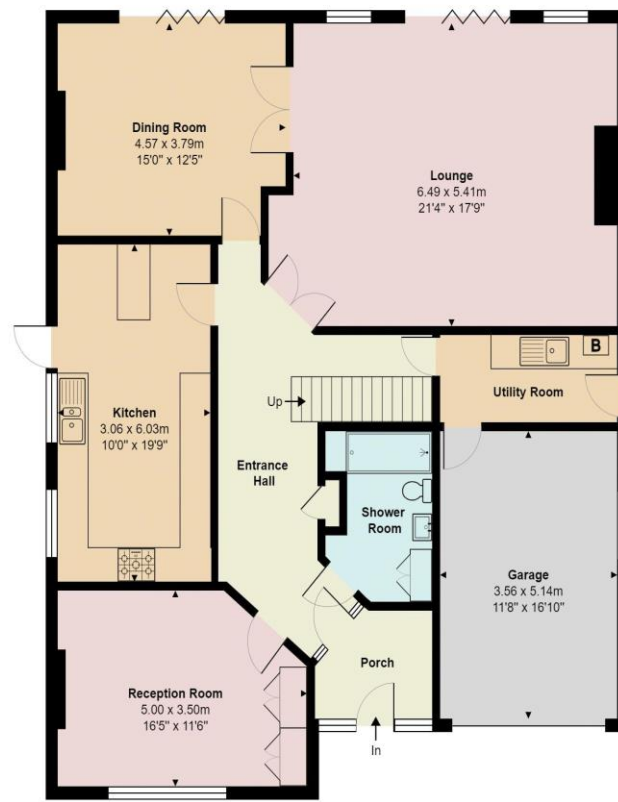


The Ridgeway

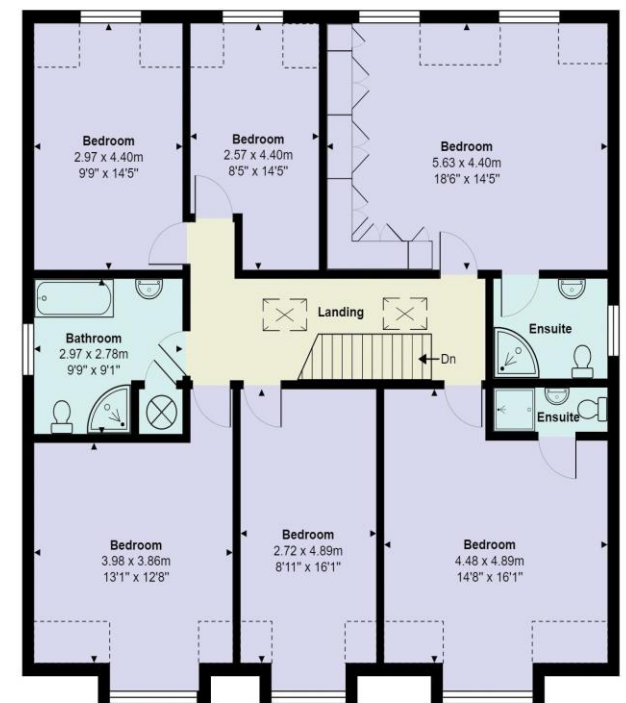
Northaw EN6 4BG

Set on the prestigious location of Cuffley and Northaw Ridgeway you will find this 6 bedroom family home. The property is situated on the south side of the road with far reaching views over rolling countryside and the city of London. You approach the spacious home via electric gates and the accommodation consist of: Entrance hallway, living room, dining room, tv room, kitchen breakfast room and downstairs shower room. Upstairs you will find 6 bedrooms, the master bedroom and guest bedroom both have en-suite shower rooms, there is also a further family bathroom. There is a large terrace abutting the immediate rear of the property, the beautiful rear garden is mainly laid to lawn and backs directly onto fields. In out driveway and double garage, off street parking for several cars. There is also a EV charging point.

The property is ideally located in a popular residential location, convenient to local amenities, transport links and several highly regarded schools including Queenswood Girl's School and Lochinver House boy's school. Within 5 minutes of Cuffley train station (40 minutes into central London) and an excellent selection of local convenience shops and restaurants. Also, within 10 minutes to the M25 so it has excellent travel links. An abundance of sports facilities can also be found locally which include tennis, golf and horse riding.



Ground Floor
Area: 145.5 m² ... 1566 ft²



First Floor
Area: 134.0 m² ... 1442 ft²

Score	Energy rating	Current	Potential
92+	A		
81-91	B		82 B
69-80	C		
55-68	D	62 D	
39-54	E		
21-38	F		
1-20	G		



The Ridgeway, Cuffley, Potters Bar, EN6 4BG

Total Area: 279.5 m² ... 3008 ft²

All measurements are approximate and for display purposes only