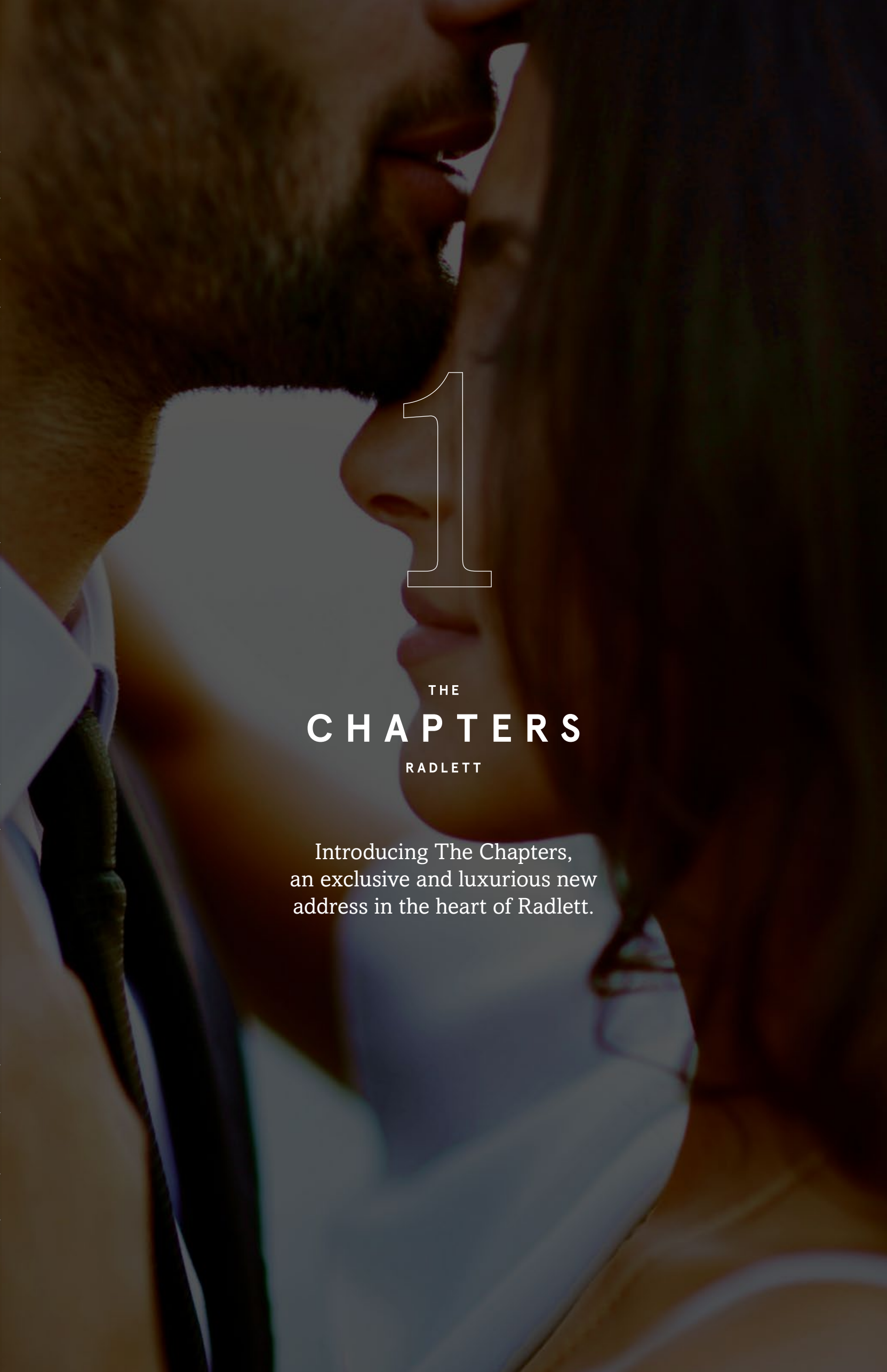
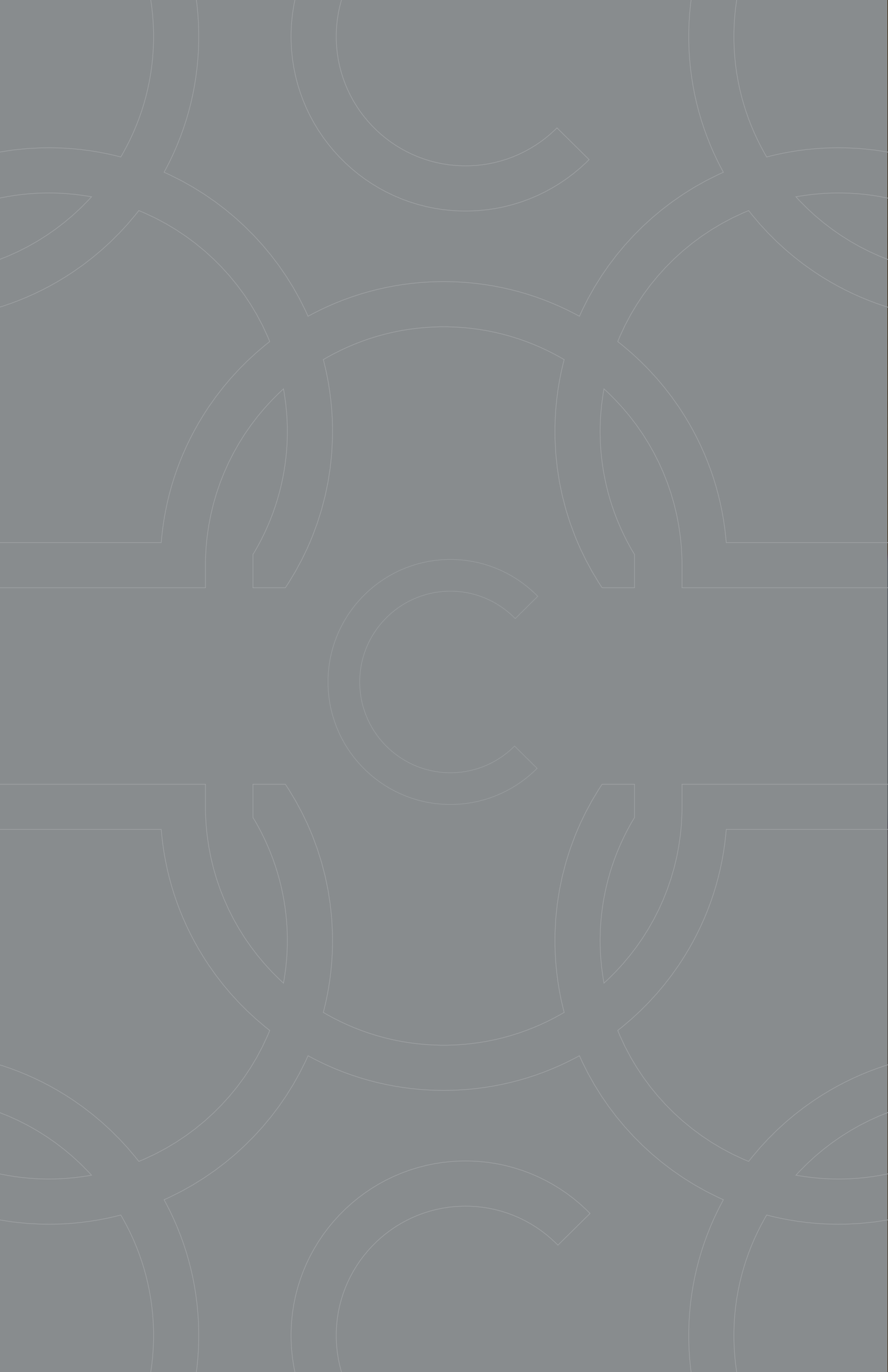




THE  
**CHAPTERS**  
RADLETT



1

THE  
**CHAPTERS**  
RADLETT

Introducing The Chapters,  
an exclusive and luxurious new  
address in the heart of Radlett.





CGI is indicative only.

THE  
**CHAPTERS**  
RADLETT

This boutique collection of just 10 exceptional apartments, only moments from the chic shops and restaurants of Radlett High Street, combines a fantastic location with exquisite design that exudes luxury and individuality.

Step inside The Chapters and you'll find stunning contemporary living spaces perfect for entertaining, while your large balcony overlooks private landscaped gardens.

What's more, thanks to secure underground parking, you can enjoy complete peace of mind.







2

A LEISURELY  
LIFESTYLE  
AWAITS



## LOCAL CHARM & CHARACTER

Just a short walk from The Chapters you'll find a unique and interesting mix of places with independent shops, charming cafés and smart local restaurants.



Or why not enjoy the beautiful local countryside – with three nearby golf courses and Aldenham Country Park with its wildlife, sailing and lakeside walks, you are spoilt for choice.

Those everyday essentials are covered too, with Battlers Green Farm Rural Shopping Village just 10 minutes away, supermarkets, health services and not forgetting the excellent choice in reputable independent and state schools all available close by in Radlett.







## TOWN AND COUNTRY CHIC

With a variety of entertainment options, the great outdoors and much more all on your doorstep, a home in Radlett really does have it all.



The historic town of St Albans is 14 minutes away by car, or less by train, with boutique stores, an art deco cinema, a vibrant café and bar scene plus an abundance of charming side streets.

Further afield The Grove, a five-star hotel and spa with a championship golf course, is the area's premium luxury destination. Nearby Watford also offers a colourful mix of high street shopping, an IMAX cinema, premiership football and the Warner Bros. Studio Tour.



As well as The Chapters' fantastic location, the beauty of a home in Radlett is how easy it is to explore further afield.





3

CAREFULLY  
CURATED  
INTERIORS



## BEAUTIFULLY BESPOKE

Experience a heightened sense of luxury with carefully curated interiors showcasing the finest in materials and design.

Every last detail has been chosen to complement its surrounds and create a feeling of luxurious comfort, from the stunning Calacatta tiled flooring beneath your feet to the striking statement lighting above.

Everyday pleasure is at the heart of The Chapters' design ethos, evident in lavish bathrooms made for lingering, and state-of-the-art kitchens for taking cooking and entertaining to the next level.













# SPECIFICATION



CGIs are indicative only.

## Kitchens and Utility

Designer kitchens by Häcker – one of Germany's leading kitchen manufacturers

High quality matt satin finish soft closing cupboard doors and drawers with ample storage

Mirrored splashbacks

Quartz worktops

Chrome Quooker taps (or similar) providing instant boiling water

Miele appliances including single oven and grill, combi microwave oven, four zone induction hob, integrated fridge/freezer, integrated dishwasher and wine cooler

Designer cooker hoods

Utility rooms with freestanding combi washer dryer

A variety of colour options for kitchen units are available for customers if bought off-plan

## Flooring

Calacatta marble effect tiles throughout living/dining areas and hallways

Fully tiled bathroom floors with contemporary large format Italian porcelain tiles

Bedroom floors finished with luxury pile fitted carpet

## Mechanical and Electrical

Thermostatically controlled underfloor heating and comfort cooling to master bedroom and living/dining areas

Electric towel rails in bathrooms and cloakrooms with thermostatic controls

Water softeners

Audio visual entry phone system linked to front gate and front door

Energy efficient recessed ceiling down lighters throughout

White metal plate switches and sockets

Apartments hard wired for sound

Sky Q TV multi sockets in all rooms with phone points

## Bathrooms

Bespoke vanity units with glass tops

Walk in wet-room showers with custom clear anti-plaque glass screens

Designer baths

Villeroy and Boch sanitaryware – basins plus WCs with soft closing seats

Chrome brassware throughout by Hansgrohe

Ladder style chrome heated towel rails

Luxury large format Italian porcelain tiles on walls and floors

## Finishes

Living areas and halls with feature coffers and recessed perimeter cove lighting

Walls painted using a cool and contemporary colour palette matt finish emulsion

Ceilings and coffer details painted warm white matt emulsion

## Internal Doors

Internal doors solid core walnut with oak inlays and polished chrome designer door handles

Skirtings and architraves stepped square deco style profiles – painted warm white satinwood finish

External balcony doors and windows finished dual colour – white internally and dark grey externally

Bespoke fitted wardrobes by Neatsmith (or similar)

## Parking

Apartments 6, 9 and 10 come with two parking bays each

Apartments 1-5 and 7-8 come with one parking bay each

Extra parking bays are available

Electric charging points on all parking bays

## General

Schindler lifts with access from car park to all floors

Automatic gates to car park – fob operated

24 hour recorded security systems throughout the development, covering all entrances and car park



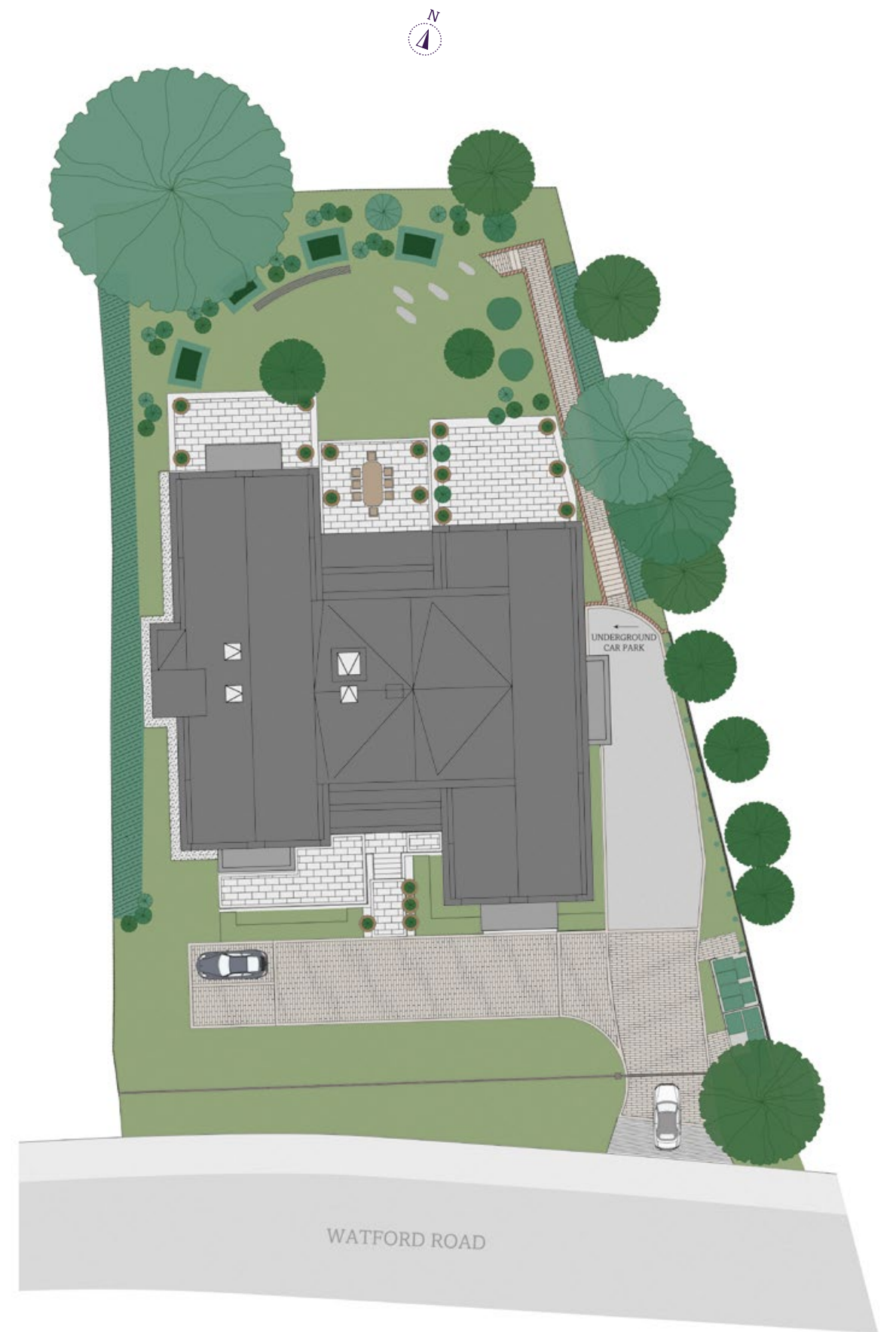


# 4

## THE PLANS



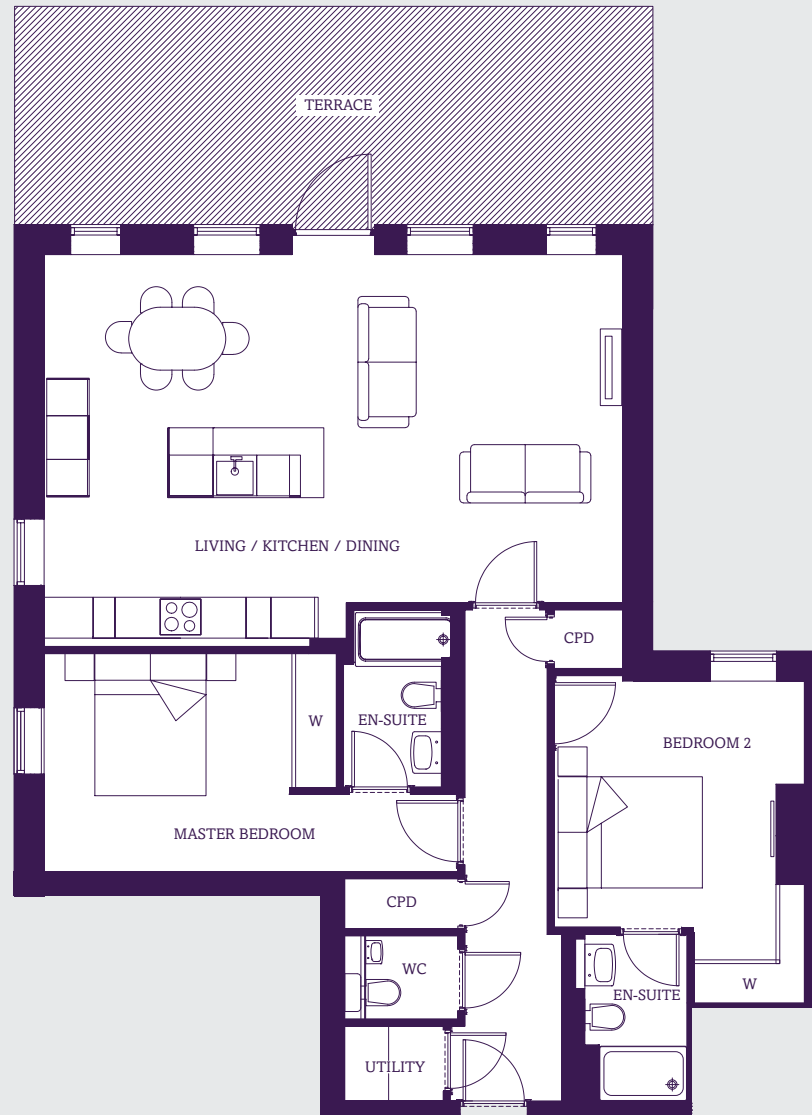
## SITE PLAN





# APARTMENT 1

GROUND FLOOR

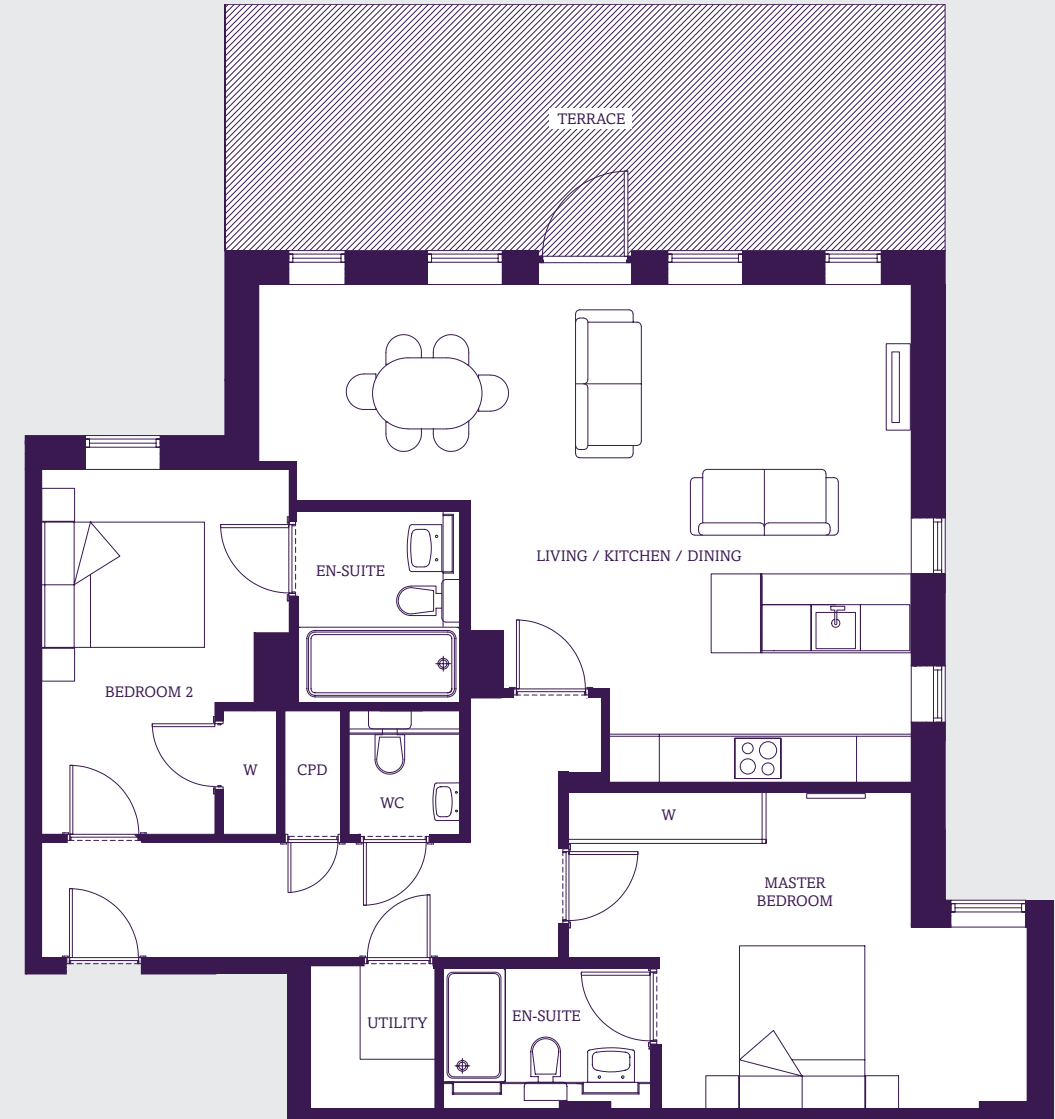


**KEY**  
CPD = Cupboard W = Wardrobe

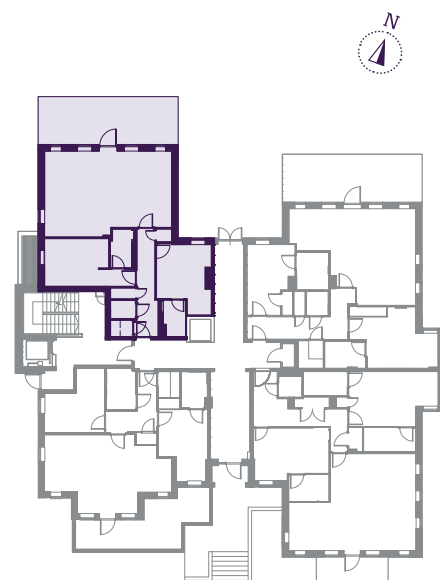


# APARTMENT 2

GROUND FLOOR



**KEY**  
CPD = Cupboard W = Wardrobe



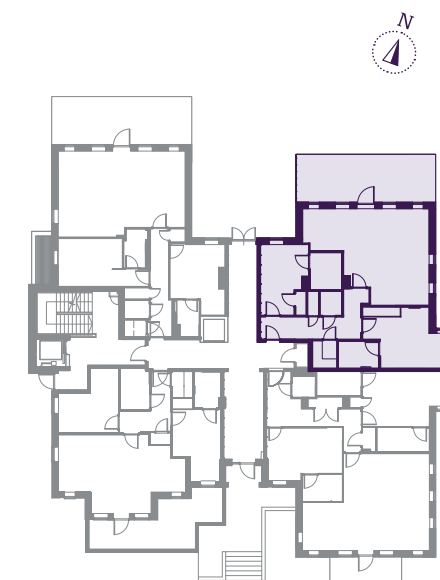
**Living / Kitchen / Dining**  
7.94m x 5.26m  
26'1" x 17'3"

**Master Bedroom**  
5.67m x 3.07m  
18'7" x 10'1"

**Bedroom 2**  
4.41m x 3.42m  
14'6" x 11'3"

**Total**  
91.3 sqm  
982 sqft

Maximum measurements taken. Floor plans are for illustrative purposes only.



**Living / Kitchen / Dining**  
7.94m x 6.05m  
26'1" x 19'10"

**Master Bedroom**  
5.57m x 3.84m  
18'3" x 12'7"

**Bedroom 2**  
4.46m x 3.01m  
14'7" x 9'11"

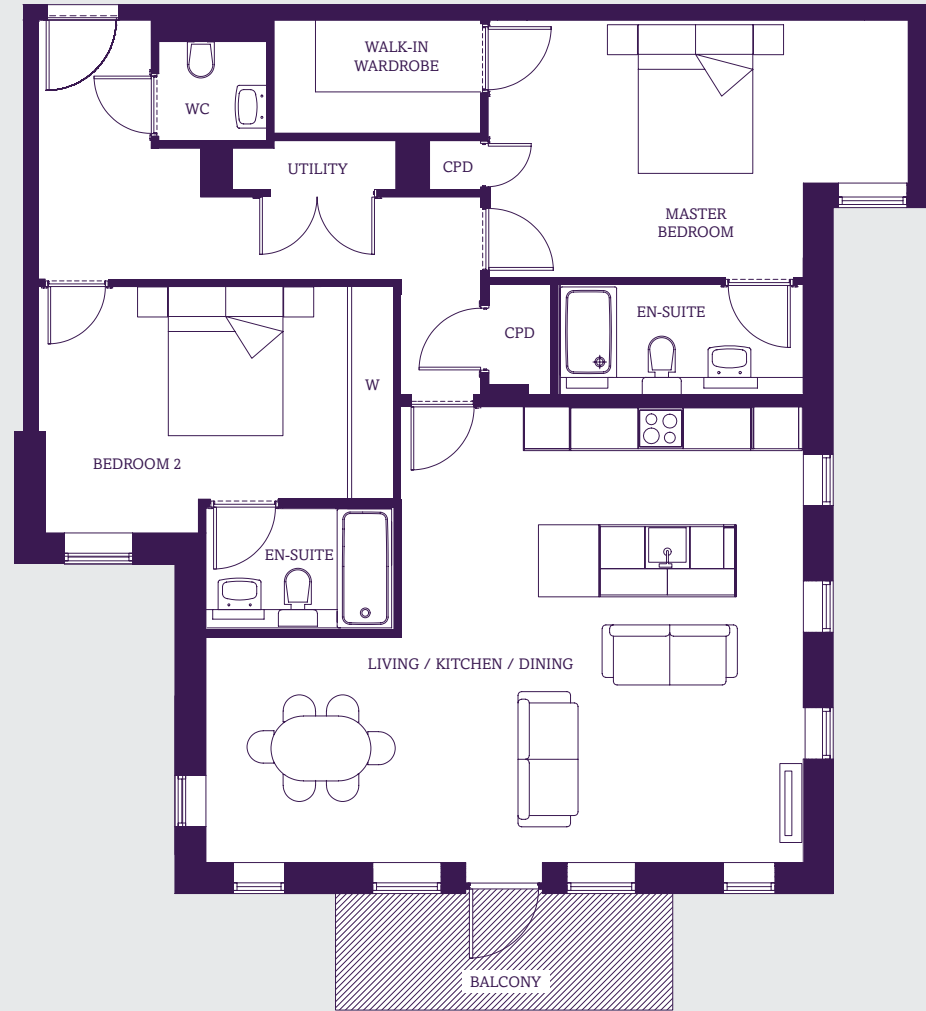
**Total**  
97.1 sqm  
1,044 sqft

Maximum measurements taken. Floor plans are for illustrative purposes only.



# APARTMENT 3

GROUND FLOOR

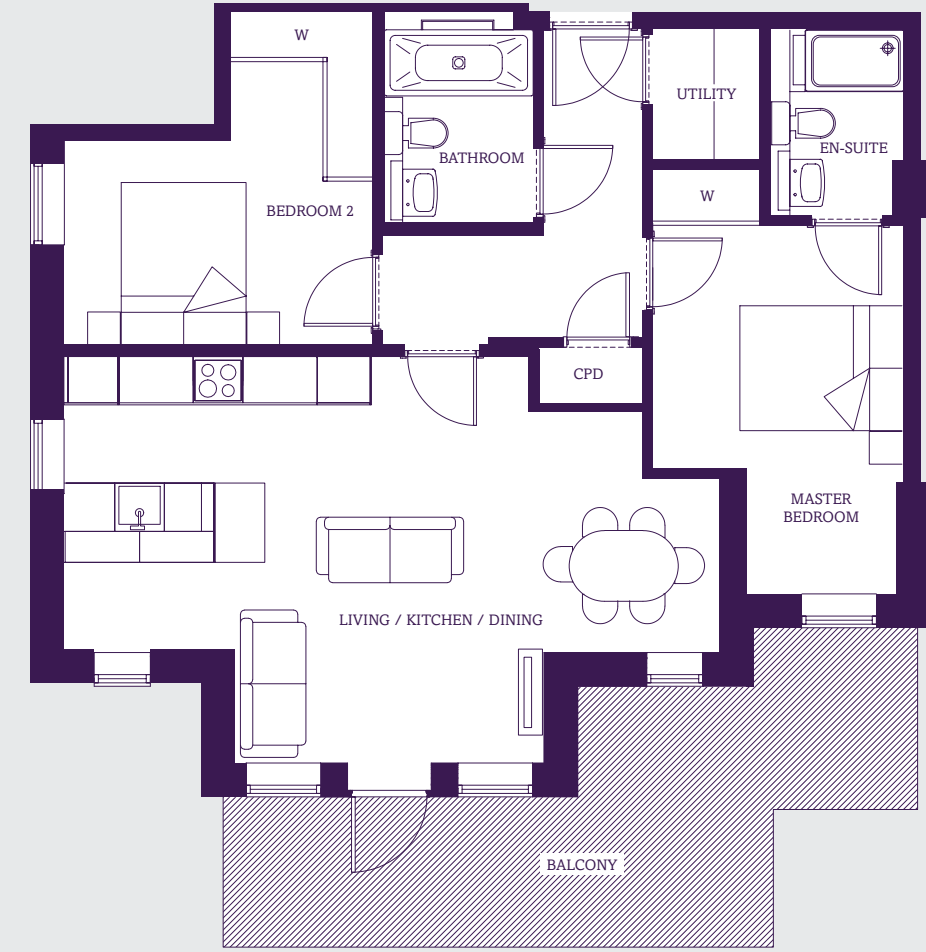


**KEY**  
CPD = Cupboard W = Wardrobe

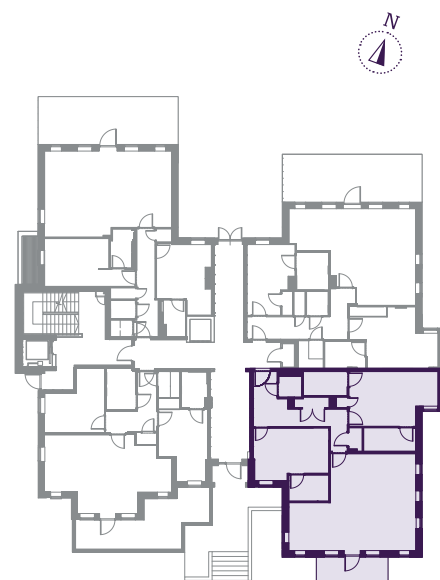


# APARTMENT 4

GROUND FLOOR



**KEY**  
CPD = Cupboard W = Wardrobe



**Living / Kitchen / Dining**  
7.94m x 6.08m  
26'1" x 20'0"

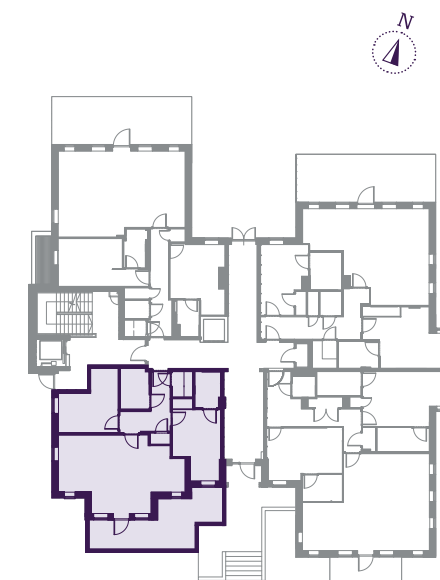
**Master Bedroom**  
5.57m x 3.41m  
18'3" x 11'2"

**Bedroom 2**  
4.62m x 3.28m  
15'2" x 10'9"

**Total**  
107.5 sqm  
1,156 sqft



Maximum measurements taken. Floor plans are for illustrative purposes only.



**Living / Kitchen / Dining**  
7.94m x 4.90m  
26'1" x 16'1"

**Master Bedroom**  
4.46m x 3.06m  
14'8" x 10'1"

**Bedroom 2**  
4.03m x 3.74m  
13'2" x 12'3"

**Total**  
77.8 sqm  
837 sqft

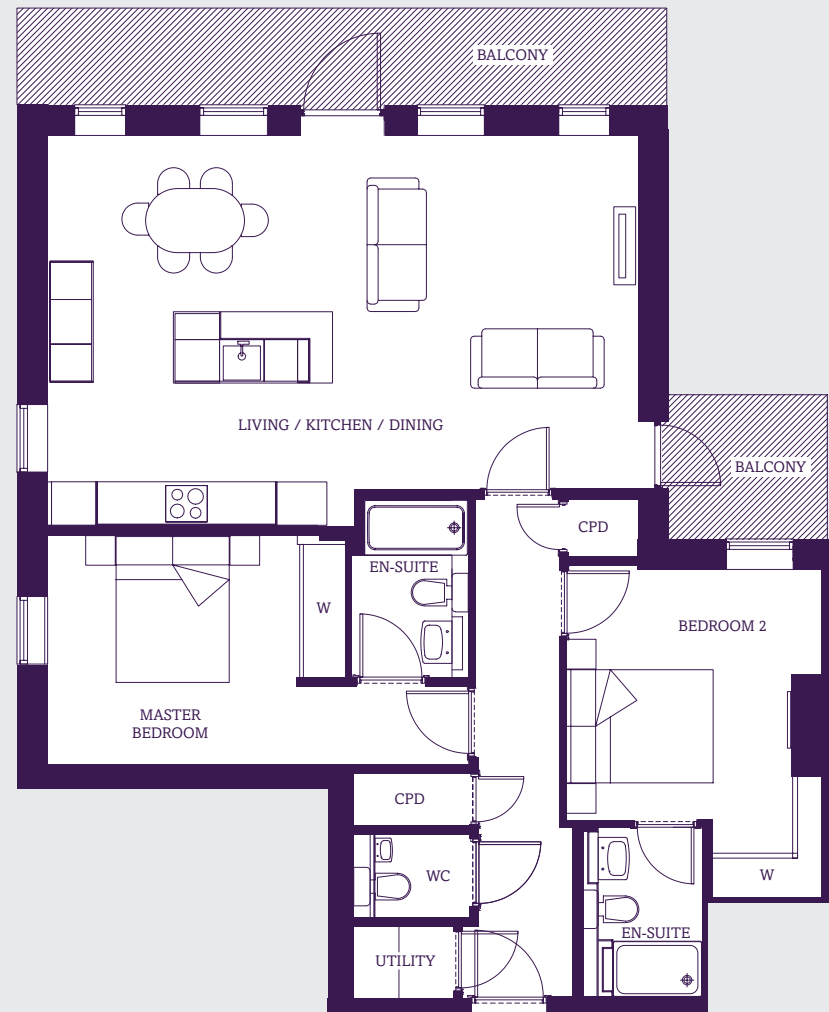


Maximum measurements taken. Floor plans are for illustrative purposes only.



# APARTMENT 5

FIRST FLOOR

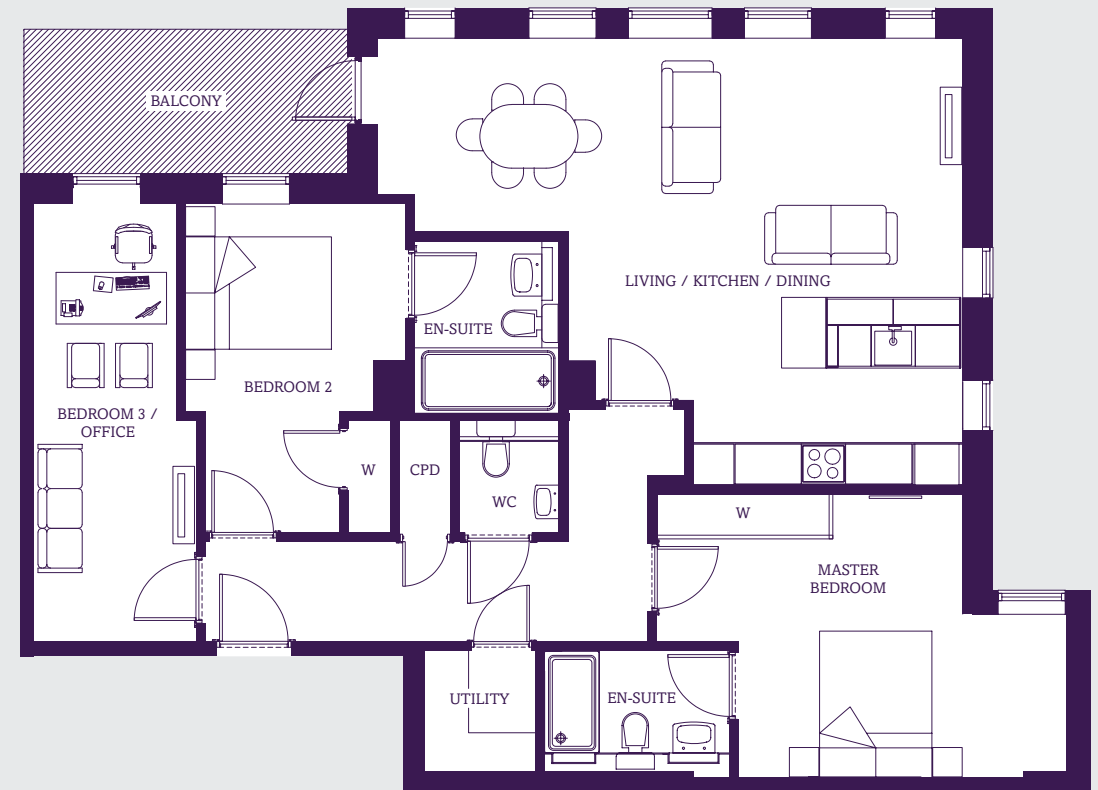


**KEY**  
CPD = Cupboard W = Wardrobe

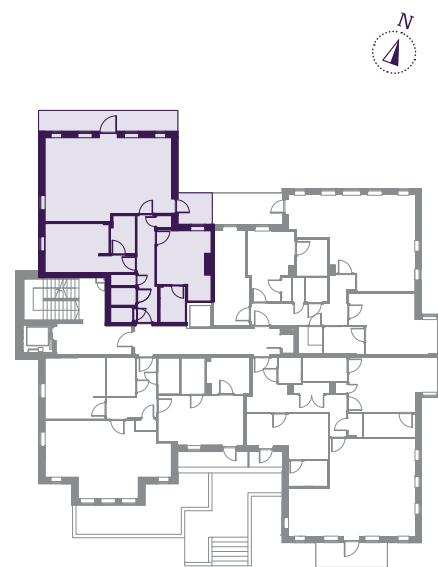


# APARTMENT 6

FIRST FLOOR



**KEY**  
CPD = Cupboard W = Wardrobe

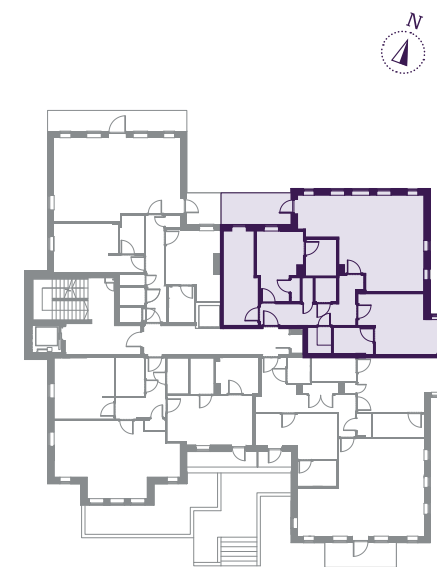


**Living / Kitchen / Dining**  
7.94m x 5.26m  
26'1" x 17'3"

**Master Bedroom**  
5.67m x 3.07m  
18'7" x 10'1"

**Bedroom 2**  
4.41m x 3.42m  
14'6" x 11'3"

**Total**  
92.1 sqm  
990 sqft



**Living / Kitchen / Dining**  
7.94m x 6.05m  
26'1" x 19'10"

**Master Bedroom**  
5.58m x 3.83m  
18'4" x 12'7"

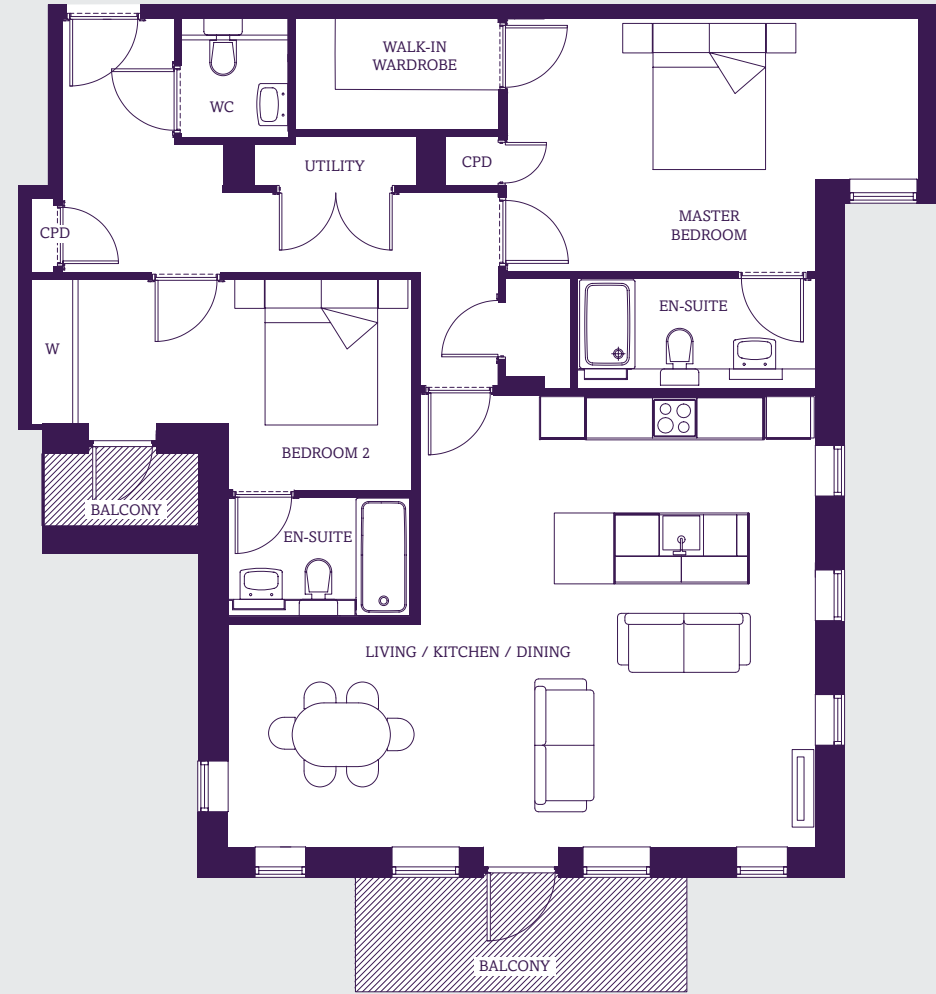
**Bedroom 2**  
4.46m x 2.98m  
14'7" x 9'9"

**Total**  
109.2 sqm  
1,174 sqft



# APARTMENT 7

FIRST FLOOR

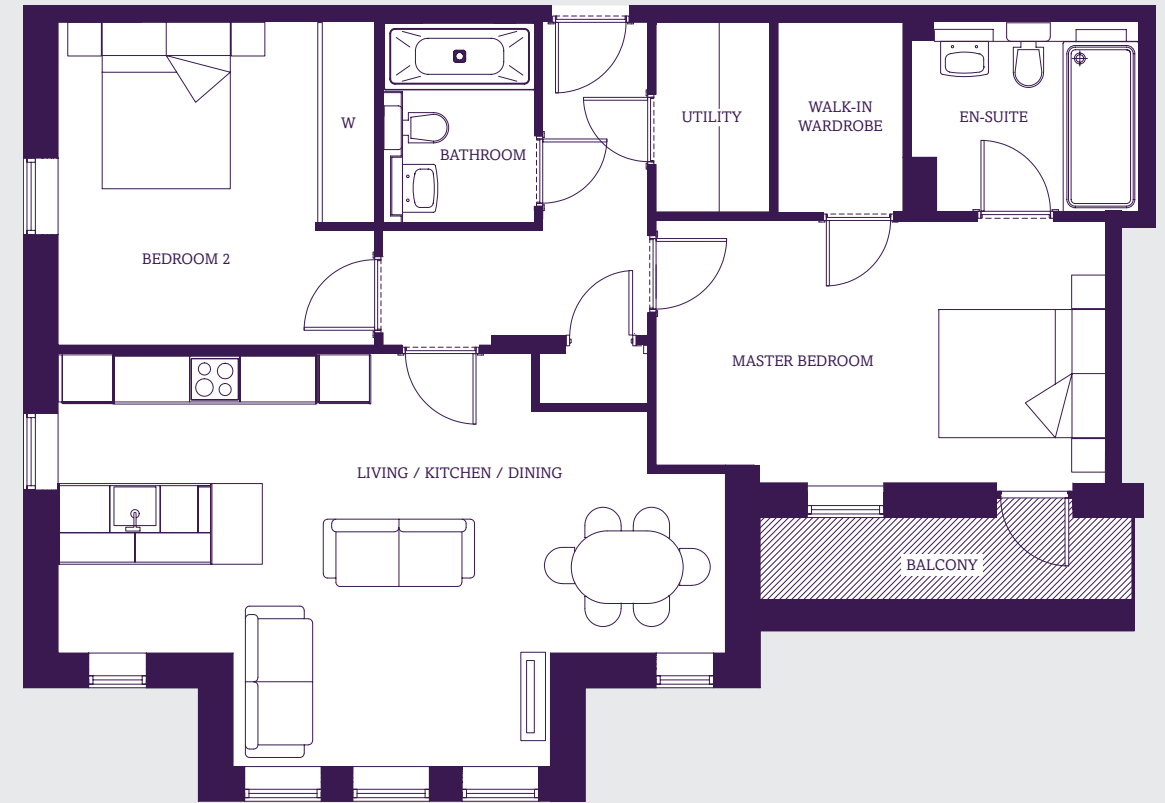


**KEY**  
CPD = Cupboard W = Wardrobe

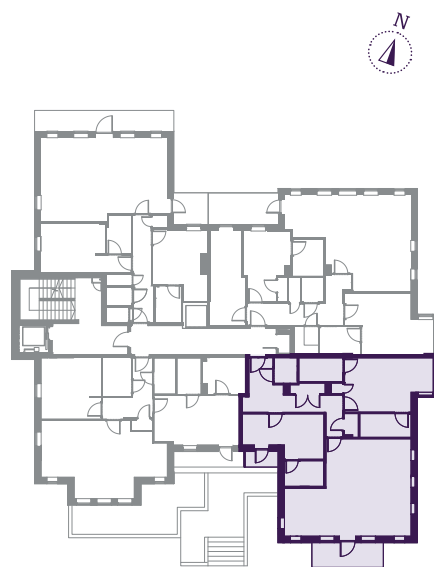


# APARTMENT 8

FIRST FLOOR



**KEY**  
CPD = Cupboard W = Wardrobe



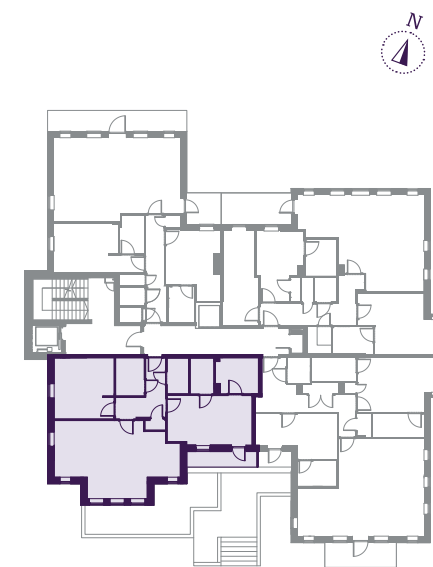
**Living / Kitchen / Dining**  
7.94m x 6.08m  
26'1" x 20'0"

**Master Bedroom**  
5.57m x 3.41m  
18'3" x 11'2"

**Bedroom 2**  
5.12m x 2.82m  
16'9" x 9'3"

**Total**  
105.5 sqm  
1,135 sqft

Maximum measurements taken. Floor plans are for illustrative purposes only.



**Living / Kitchen / Dining**  
7.94m x 4.90m  
26'1" x 16'1"

**Master Bedroom**  
5.34m x 2.90m  
17'6" x 9'6"

**Bedroom 2**  
3.81m x 3.74m  
12'6" x 12'3"

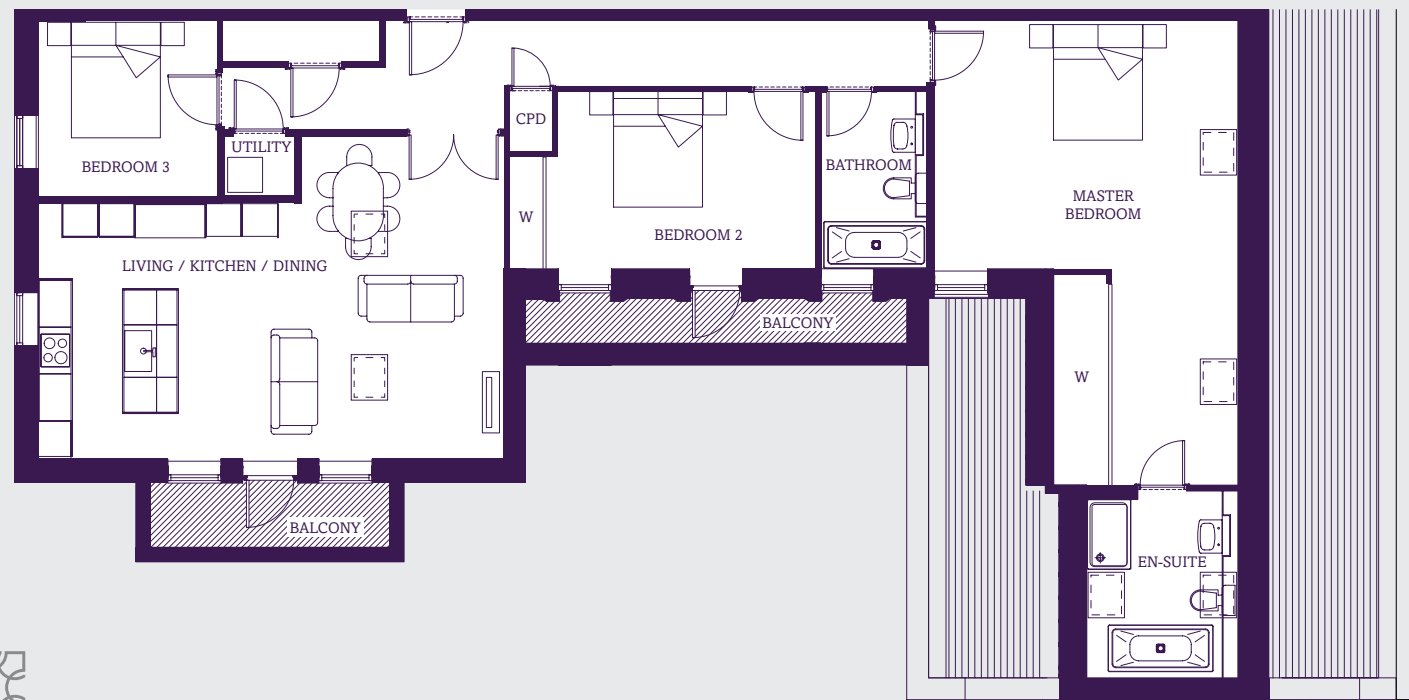
**Total**  
90.2 sqm  
970 sqft

Maximum measurements taken. Floor plans are for illustrative purposes only.



# PENTHOUSE 9

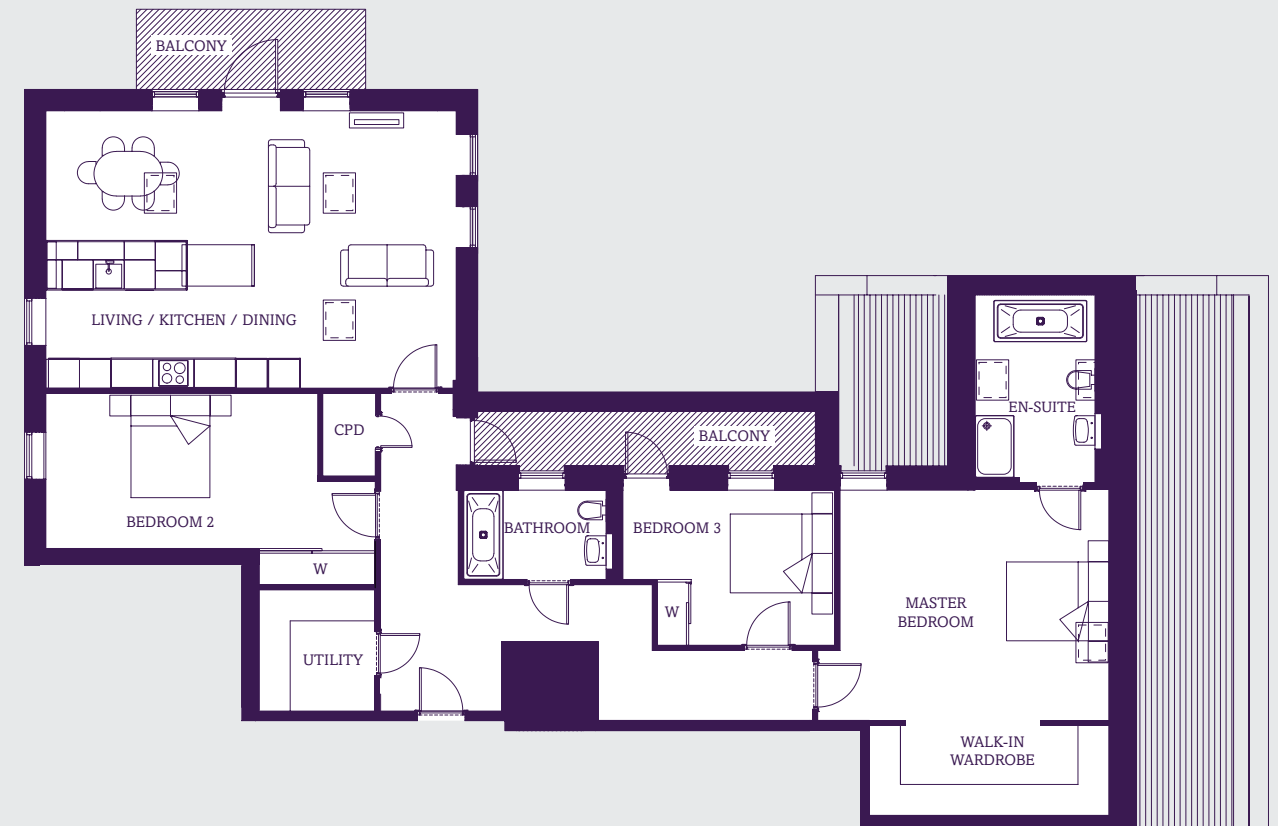
SECOND FLOOR



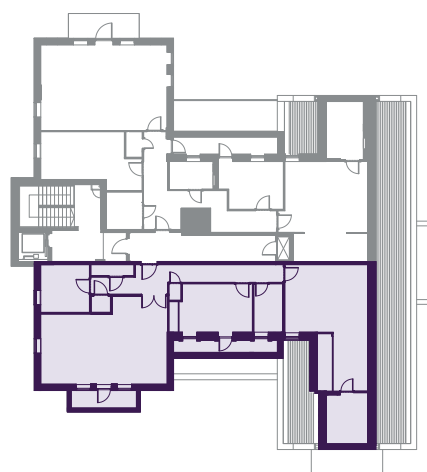
**KEY**  
CPD = Cupboard W = Wardrobe

# PENTHOUSE 10

SECOND FLOOR



**KEY**  
CPD = Cupboard W = Wardrobe



**Living / Kitchen / Dining**  
7.98m x 5.53m  
26'2" x 18'2"

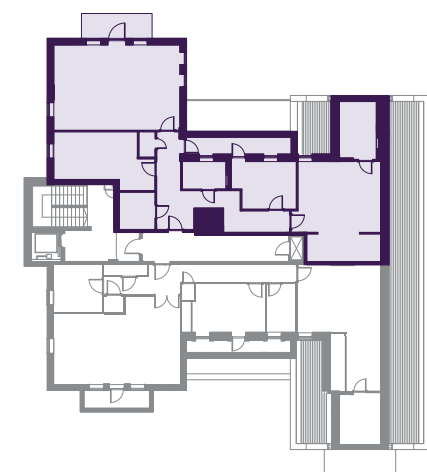
**Master Bedroom**  
7.95m x 5.20m  
26'1" x 17'1"

**Bedroom 2**  
5.18m x 3.02m  
17'0" x 9'11"

**Bedroom 3**  
3.06m x 2.98m  
10'1" x 9'9"

**Total**  
133 sqm  
1,431 sqft

Maximum measurements taken. Floor plans are for illustrative purposes only.



**Living / Kitchen / Dining**  
7.94m x 5.36m  
26'1" x 17'7"

**Master Bedroom**  
6.29m x 5.20m  
20'8" x 17'1"

**Bedroom 2**  
6.35m x 2.96m  
20'10" x 9'8"

**Bedroom 3**  
4.07m x 2.94m  
13'4" x 9'8"

**Total**  
150 sqm  
1,614 sqft

Maximum measurements taken. Floor plans are for illustrative purposes only.





**CAVENDO**

At Cavendo we take great pride  
in doing things a little differently.

With over 20 years' experience in premium property development, we have steadily built a solid reputation for crafting homes of the highest quality in the most sought-after locations throughout London and the South East.

Every property that bears our name showcases the values that we believe are key to creating an exceptional home – beautiful design, thoughtful individuality and superior craftsmanship, from the ground up.

For all sales enquiries please call:

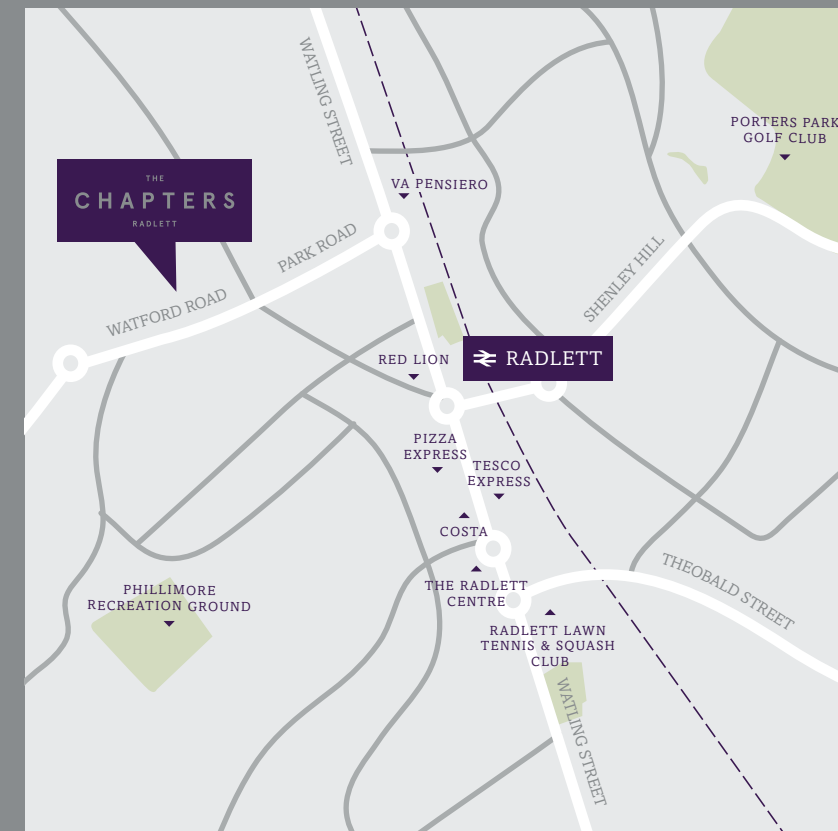
**020 8441 9555**

[WWW.STATONS.COM](http://WWW.STATONS.COM)

**STATONS**  
NEW HOMES & LAND



THE  
**CHAPTERS**  
RADLETT



6 Watford Road, Radlett, WD7 8LD

IMPORTANT NOTICE: Whilst every care has been taken to ensure accuracy these particulars do not constitute part of any offer or contract and the right to change plans, specifications and materials is reserved. All measurements are given as a guide only. Purchasers are advised to check plot specific dimensions and specifications prior to reservation. No liability can be accepted for any errors arising there from. Development images are indicative and may vary. Specifications for this development may not include fixtures, fittings and furnishings shown in the photographs and illustrations. Features and finishes are shown for illustrative purposes only and are not intended to form part of any contract or warranty. No responsibility is taken for any other error, omission, or mis-statements in these particulars. Neither the vendor nor its agents make or give, whether in these particulars, during the negotiations or otherwise, any representation or warranty in relation to this property.

Designed by Fresh Lemon





CAVENDO

[cavendohomes.co.uk](http://cavendohomes.co.uk)