



Markfield Road, Ratby, LE6 0LS

Part of  
**ANDREW  
GRANGER & CO**

**SHELDON  
BOSLEY**  
KNIGHT  
LAND AND  
PROPERTY  
PROFESSIONALS



# Property Description

The Kilmore is a luxurious five-bedroom detached home that offers an exceptional combination of sophisticated design, spacious living areas, and practical features, making it the perfect choice for modern family living.

On the ground floor, the heart of the home is a stunning open-plan kitchen and dining area, designed with both style and functionality in mind. The kitchen is equipped with high-end appliances, ample counter space, and a central island that serves as both a focal point and a convenient workspace. French doors lead directly out to a spacious garden, allowing natural light to fill the room.

The ground floor also features a separate living room, which provides a perfect setting for family movie nights, gatherings, or simply unwinding after a long day. Additionally, there is a practical utility room for laundry and storage, as well as a cloakroom for added convenience. A separate room on the ground floor offers flexibility; it can be used as a study, home office, playroom, or additional guest space.

The first floor consists of five well-sized bedrooms, ensuring comfort and privacy for all family members. Bedroom 1 is a luxurious master suite, complete with its own ensuite shower room for added convenience and privacy. Bedroom 2 also features an ensuite shower room, making it ideal for guests or older children seeking additional privacy. The remaining three bedrooms are generously proportioned, providing plenty of space for furniture and storage. These rooms share access to a centrally located main bathroom.

Outside, the property impresses further with a double garage that offers secure parking for two vehicles and additional storage space. The driveway provides ample parking for extra vehicles, ensuring that residents and guests always have convenient parking options.







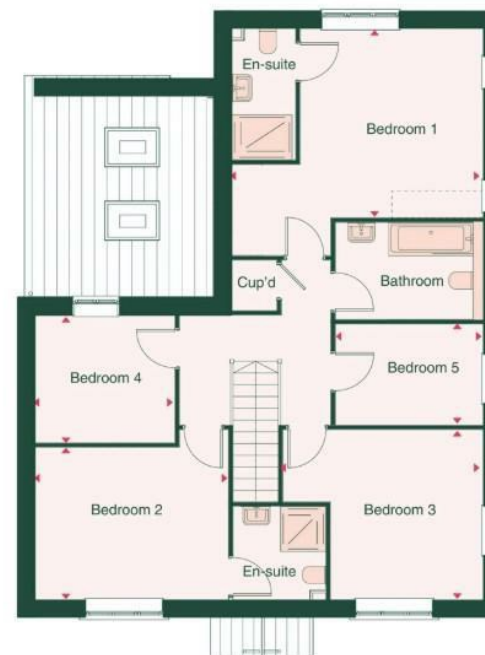
## Key Features

- Former show home with many upgrades included
- Large open plan kitchen/ dining and family room
- Enjoy peace of mind with a 10-year NHBC warranty
- Integrated Appliances
- Part Exchange and Assisted Move options to get you moving quicker
- Move in by Christmas
- Last remaining plot - don't miss out!
- Turfed rear garden - ready to move in
- Flooring package included
- New year - new home

**£580,000**







We routinely refer clients to both our recommended Legal Firm and a panel of Financial Services Providers. It is your decision whether you choose to deal with these companies. In making that decision, you should know that we receive a referral fee





To view this property please contact our New Homes (Leicestershire) office  
on 0116 3087740

Part of  
**ANDREW  
GRANGER & CO**

Part of  
**SHELDON  
BOSLEY  
KNIGHT**

LAND AND  
PROPERTY  
PROFESSIONALS