



Station Road, Evesham, WR11 8UP

**SHELDON
BOSLEY
KNIGHT**

LAND AND
PROPERTY
PROFESSIONALS

Property Description

OPEN DAY EVENT - CALL TODAY!
Experience exclusive gated lodge living at Willow Park, nestled in the picturesque village of Salford Priors, on the edge of the Cotswolds. This premium development offers 40 spacious plots, each with generous gardens, private driveways, and superfast fibre broadband—perfect for modern, connected living.

Enjoy a blend of style, comfort, and tranquillity, all while benefiting from easy access to local amenities and excellent transport links.

Don't miss out—book your viewing today!



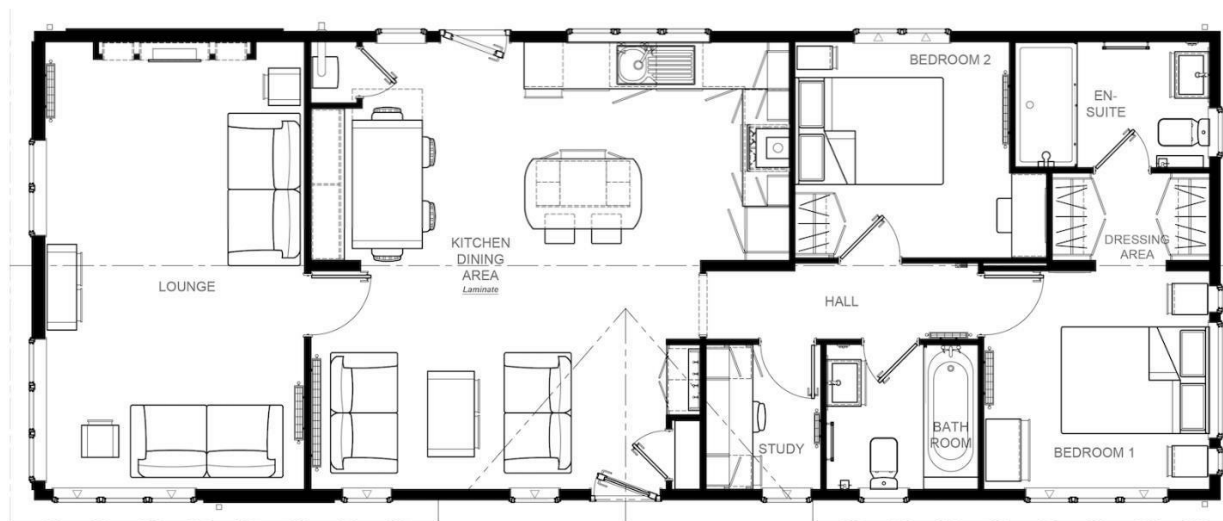


Key Features

- OPEN 12 MONTHS OF THE YEAR
- 50 Year License agreement
- Bespoke lodges created to your specification
- Fully Furnished
- Pre-Owned Omar Vision
- CCTV, onsite Care Taker giving overall peace of mind
- Premium Plot Overlooking pond
- Pet Friendly
- Open 365 days per year
- Great Transport links

Price Guide
£239,000





EPC Rating -

Tenure - Leasehold

Council Tax Band - New Build

Local Authority



We routinely refer clients to both our recommended legal firm and a panel of financial services providers. It is your decision whether you choose to deal with these companies. In making that decision, you should know that we receive a referral fee.

**SHELDON
BOSLEY
KNIGHT**

LAND AND
PROPERTY
PROFESSIONALS