



Hockley Lane, Stratford Upon Avon, CV37 7SS

**SHELDON
BOSLEY
KNIGHT**

LAND AND
PROPERTY
PROFESSIONALS

Property Description

Discover a unique opportunity to acquire a prime plot of land in the picturesque village of Ettington, Warwickshire. This exceptional plot comes with full planning permission to build an executive family home offering 2,691 sq ft of luxurious living space, complemented by an adjoining detached double garage (454 sq ft).

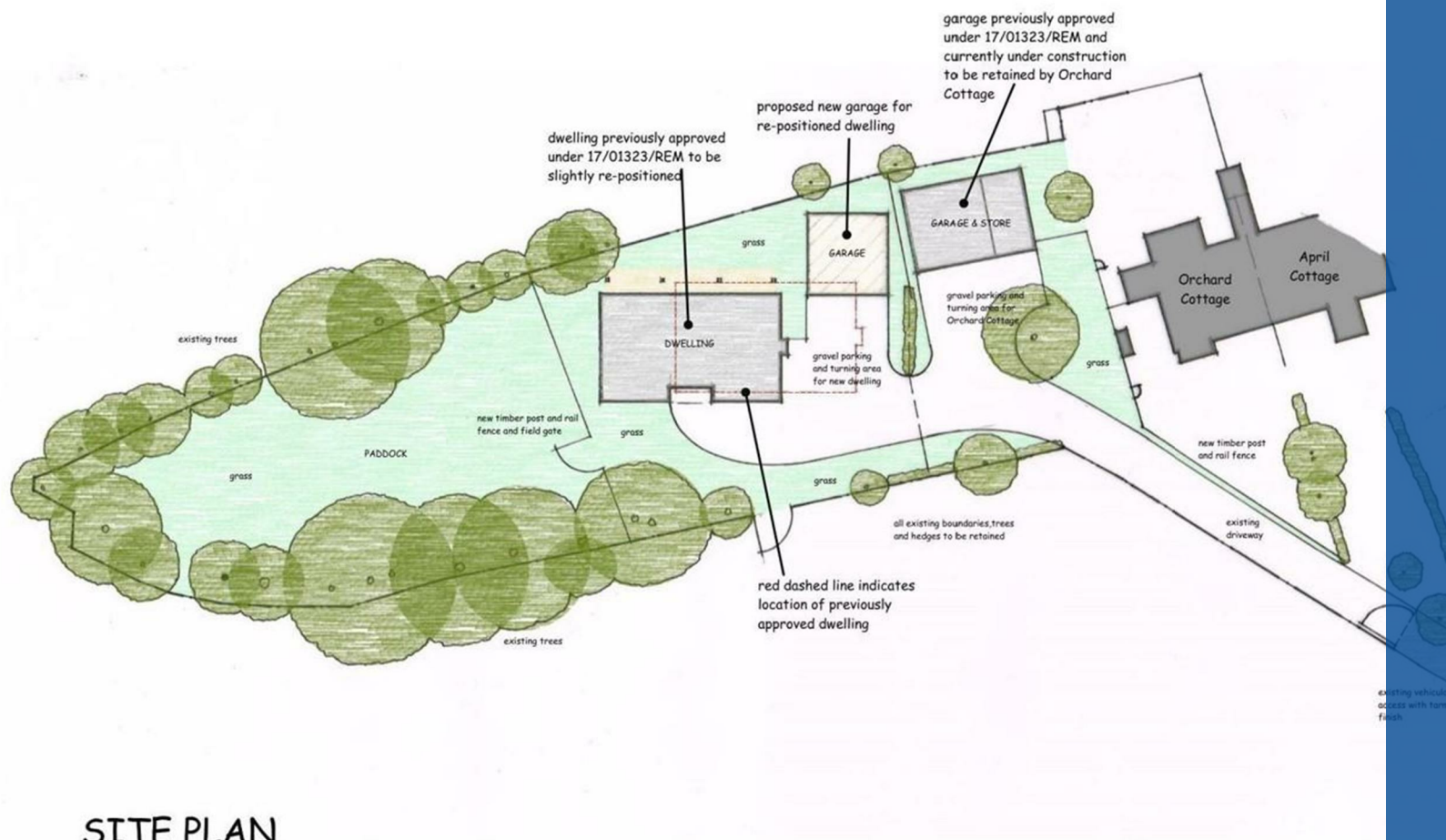
Nestled at the top end of Hockley Lane, this desirable plot is accessed via a private track, ensuring privacy and tranquillity. Situated on the northern side of the charming rural village of Ettington, the plot offers a serene setting with superb countryside views, while being just a short walk from essential village amenities.

This plot provides the canvas for a build seeking a blend of luxury, convenience, and rural charm.

For more information, please contact Sheldon Bosley Knight Land & New Homes.

Viewings are strictly by appointment





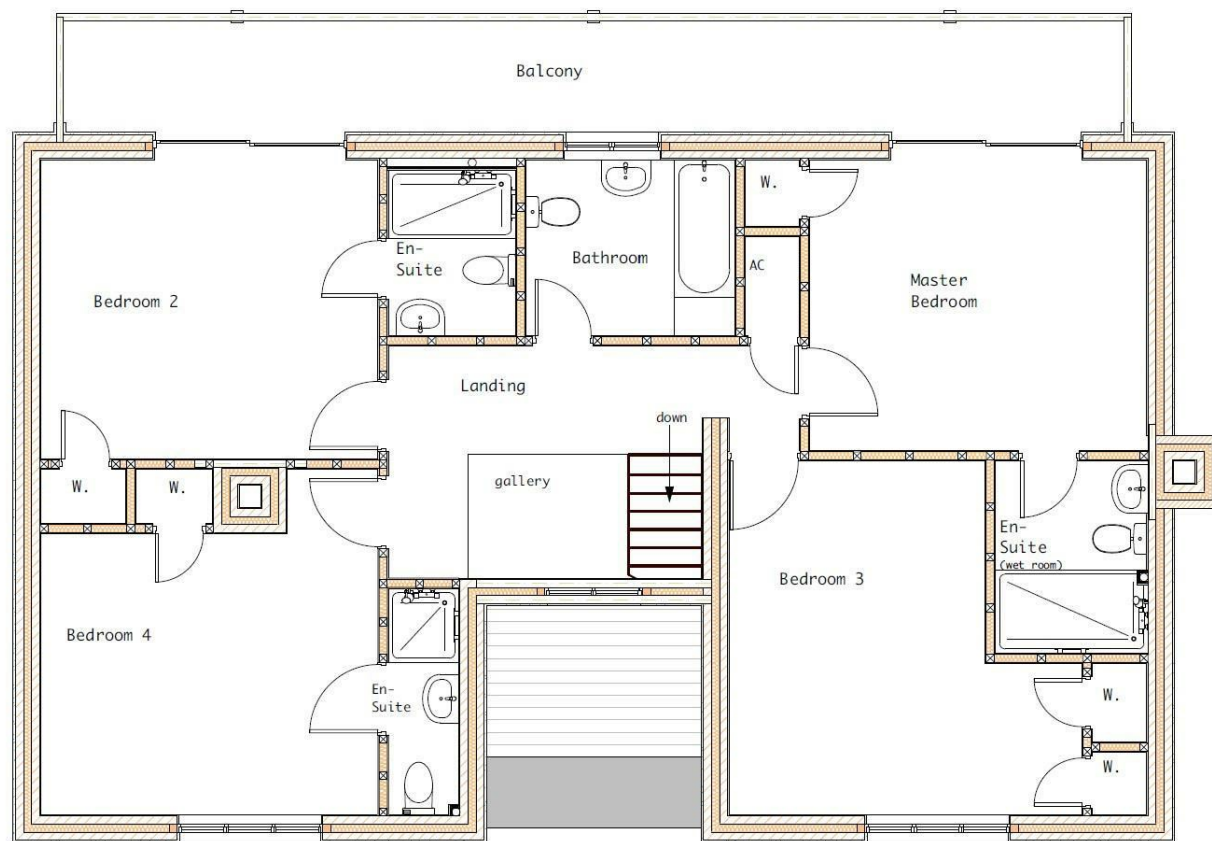
SITE PLAN

Key Features

- Prime development land in the picturesque village of Ettington
- Full planning permission granted in August 2017 with material start
- Plans for an executive family home offering 2,691 sq ft & detached double garage (454 sq ft).
- Plot is accessed via a private track
- Superb rural setting with countryside views
- Approx. 0.3 acre plot
- Planning reference 17/01323/REM
- ***Viewings are strictly by appointment***

Guide Price
£365,000





EPC Rating -

Tenure - Freehold

Council Tax Band - Exempt

Local Authority



We routinely refer clients to both our recommended legal firm and a panel of financial services providers. It is your decision whether you choose to deal with these companies. In making that decision, you should know that we receive a referral fee.

**SHELDON
BOSLEY
KNIGHT**

LAND AND
PROPERTY
PROFESSIONALS