



Computer Generated Image

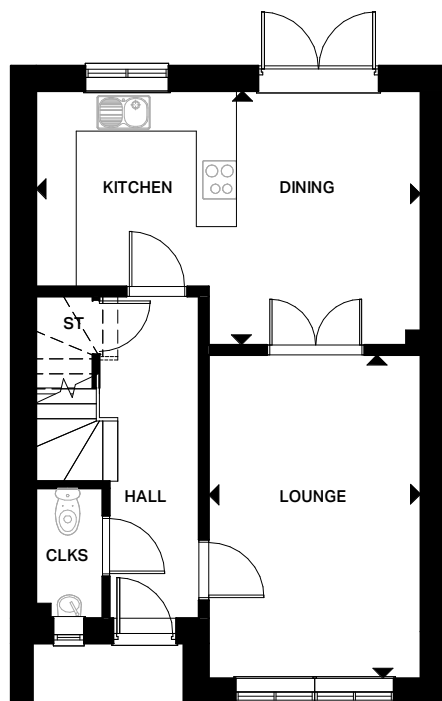


MCARTHUR GARDENS
Bedworth, Warwickshire

The Warwick

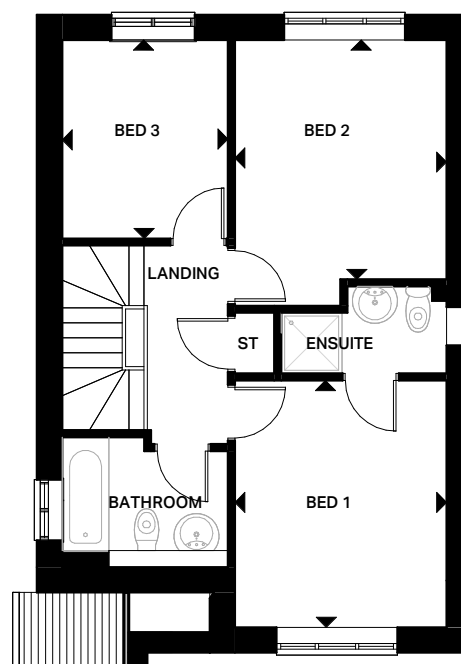
Plots 3 & 6

A beautiful, 3-bedroom family home with private driveway for two cars. The Warwick features an open plan kitchen / dining area with a bespoke integrated kitchen and breakfast bar and French doors leading through to the rear garden. Double doors also separate the kitchen / dining from the living room, creating flexibility in the space, and there is a ground floor WC. Upstairs are three double bedrooms. The master includes an en-suite with a shower whilst the other bedrooms are served by a family bathroom.



Ground Floor

Kitchen / Dining	5760mm x 3803mm
Lounge	3173mm x 4845mm



First Floor

Bedroom 1	3173mm x 3698mm
Bedroom 2	3173mm x 3584mm
Bedroom 3	2483mm x 2973mm