



CERRIS
HOMES

that welcome home feeling



STONE WALK

Seabridge, Newcastle-under-Lyme, ST5 3UB



WELCOME TO STONE WALK

We're thrilled to welcome you to Stone Walk - a special collection of beautifully crafted two and three-bedroom homes in the lovely village of Seabridge. Here, you'll find the perfect blend of peaceful village life and easy access to everything you need, with Newcastle-under-Lyme just to the north and Stoke-on-Trent to the east.

At Stone Walk, every home is designed to make you feel comfortable from the moment you walk through the door. Picture yourself enjoying the open green spaces - relaxing on a sunny afternoon, playing with the kids, or catching up with neighbours who quickly become friends. With scenic walks and cycle routes at Rowley Wood, cosy local pubs, and great schools nearby, you'll have everything you need to settle in and feel part of a vibrant, welcoming community.

Getting out and about is a breeze, too. Stoke-on-Trent is just a short drive or bus ride away, where you can explore the city's famous pottery heritage at the Potteries Museum and Art Gallery, or dive into the area's fascinating history and culture.

We're here to support you every step of the way - making your move simple, reassuring, and exciting. Because at Stone Walk, it's all about that welcome home feeling.

STONE WALK DEVELOPMENT MAP



Shared Ownership Properties

Two Bedroom Homes	Three Bedroom Homes	Other Homes
<div></div> The Maple Plots 18, 19 & 20	<div></div> The Cypress Plots 1, 13, 14, 29, 40, 51 & 52	<div></div> Bovis Homes
	<div></div> The Spruce Plots 15 & 39	
	<div></div> The Hazel Plots 21 & 22	
	<div></div> The Beech Plots 31 & 32	

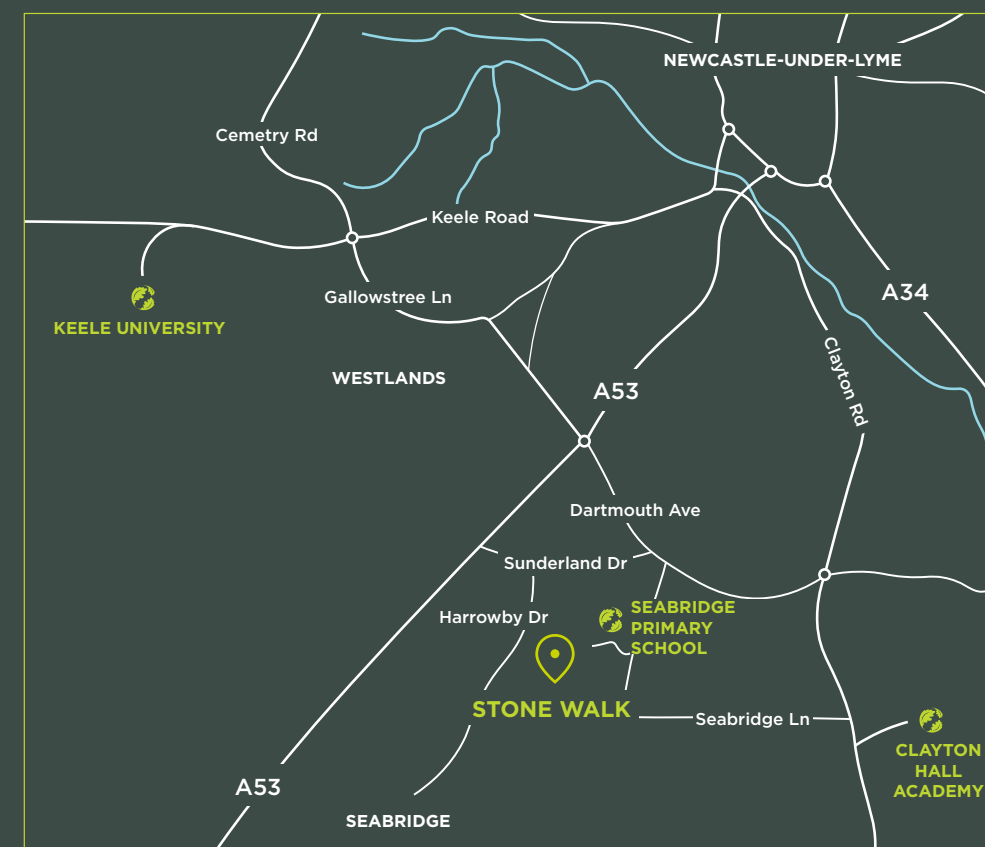


GROWING MINDS, BRIGHT FUTURES

At Stone Walk, families can feel confident knowing that education is right on the doorstep. An OFSTED-rated 'Good' primary school sits at the entrance to the development, with two more 'Good' primary schools less than half a mile away—making the school run a breeze. For older children, there are four secondary schools within two miles, all rated either 'Outstanding' or 'Good', so you can be sure your child's education is in safe hands. And when it comes to further education, both Newcastle and Stoke offer a wide range of opportunities, with Keele University just a short drive away.

Nearby education highlights:

- 🌿 Seabridge Primary School - 0.4 miles | 8 mins walk
- 🌿 Clayton Hall Academy - 1 mile | 4 mins drive
- 🌿 Keele University - 3.2 miles | 10 mins drive

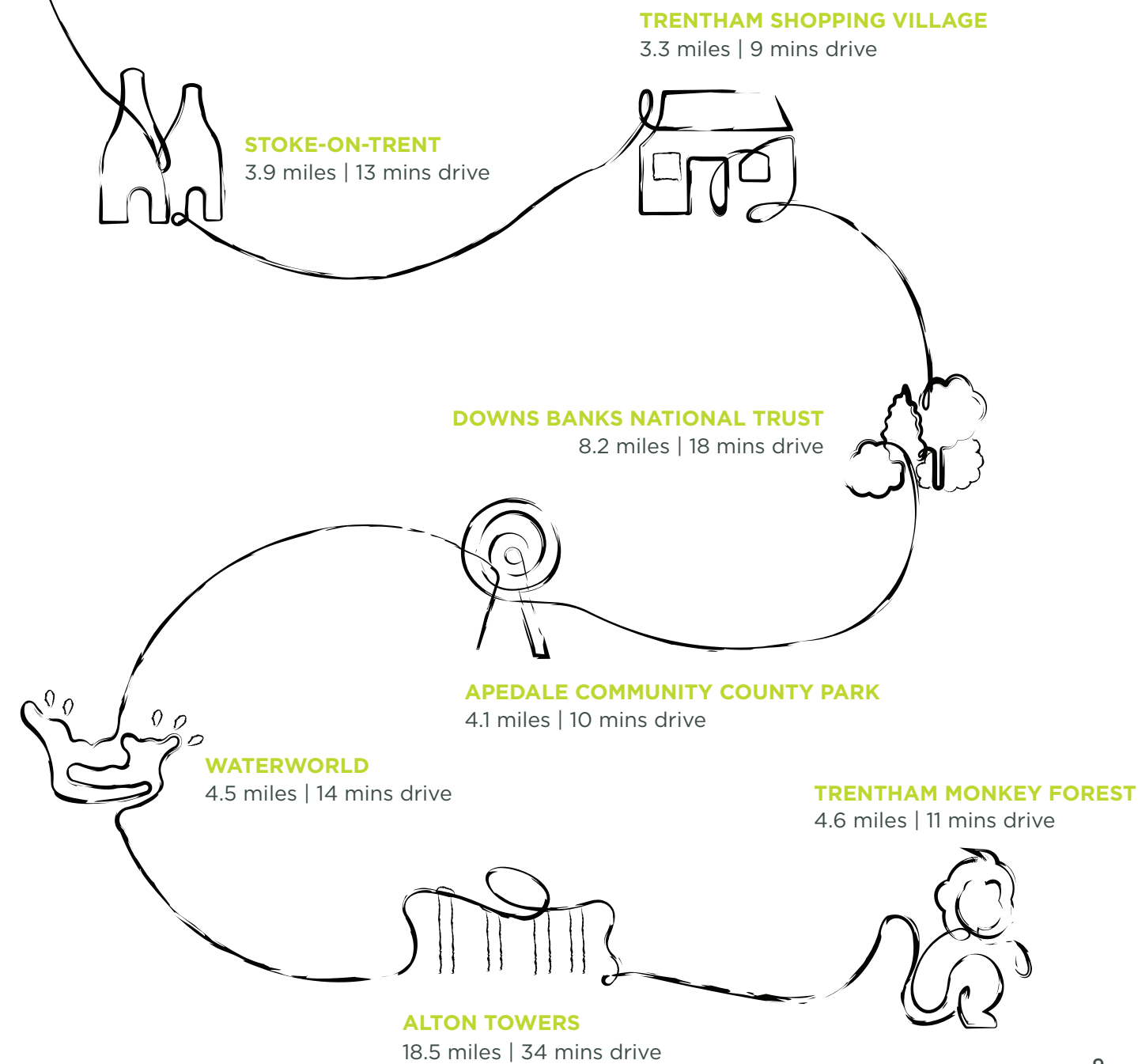




Trentham Gardens, Staffordshire

DAYS OUT, DONE YOUR WAY

Stone Walk is perfectly placed for making the most of your free time. Whether you're after a spot of shopping, a family day out, or a bit of fresh air, there's plenty to explore nearby. From the shops and cafes at Trentham Shopping Village to the adventures waiting at Alton Towers, you'll never be short of things to do. Beautiful green spaces like Downs Banks and Apedale Community Country Park are ideal for relaxing walks or picnics, while Water World and Trentham Monkey Forest promise fun for all ages.



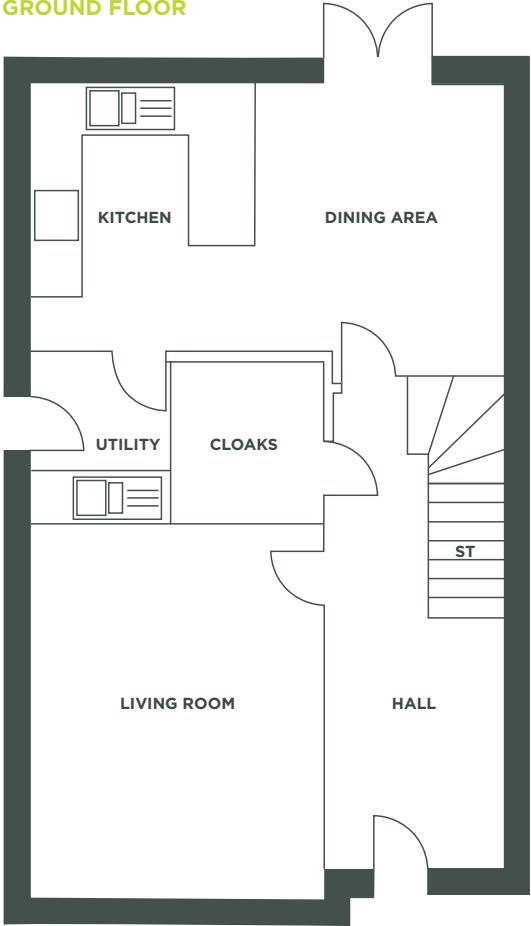


THE FLOOR PLANS

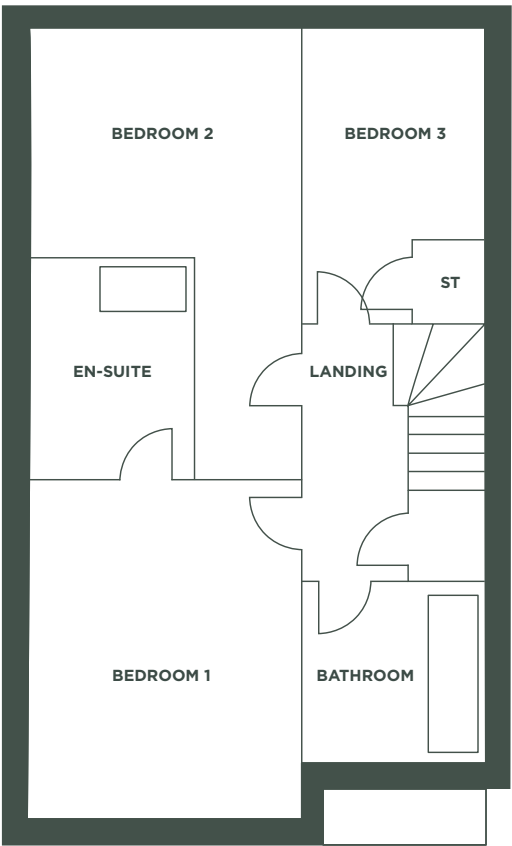
The Cypress

Shared Ownership

GROUND FLOOR



FIRST FLOOR



GROUND FLOOR

Kitchen / Dining Room	5.52m x 3.12m	18' 1" x 10' 2"
Living Room	4.33m x 3.40m	14' 2" x 11' 1"

FIRST FLOOR

Bedroom 1	4.09m x 3.28m	13' 5" x 10' 9"
Bedroom 2	3.28m x 2.82m	10' 9" x 9' 3"
Bedroom 3	3.54m x 2.16m	11' 7" x 7' 1"

*Computer generated images and floorplan have been produced for illustrative purposes only. The dimensions have tolerances of + or -50mm and should not be used other than for general guidance. The floorplans shown are not to scale.

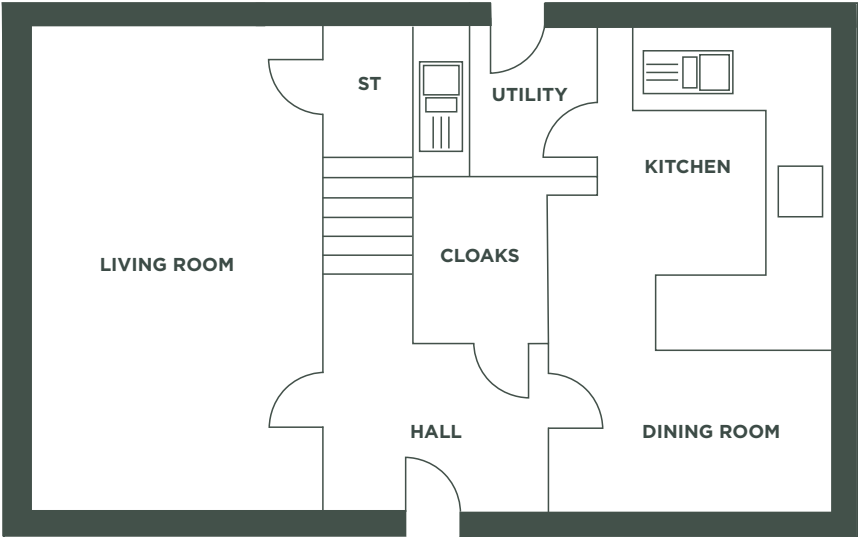


THE FLOOR PLANS

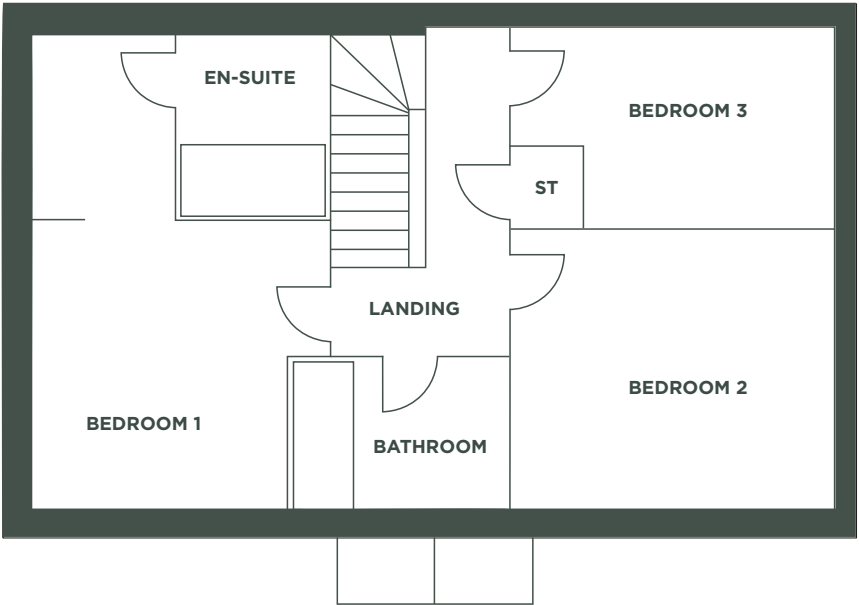
The Spruce

Shared Ownership

GROUND FLOOR



FIRST FLOOR



GROUND FLOOR

Kitchen	3.16m x 2.69m	10' 4" x 8' 10"
Dining Room	3.14m x 2.36m	10' 4" x 7' 9"
Living Room	5.53m x 3.32m	18' 2" x 10' 11"

FIRST FLOOR

Bedroom 1	3.34m x 2.94m	10' 11" x 9' 8"
Bedroom 2	3.60m x 3.27m	11' 10" x 10' 9"
Bedroom 3	3.63m x 2.17m	11' 11" x 7' 2"

*Computer generated images and floorplan have been produced for illustrative purposes only.
The dimensions have tolerances of + or -50mm and should not be used other than for general guidance. The floorplans shown are not to scale.

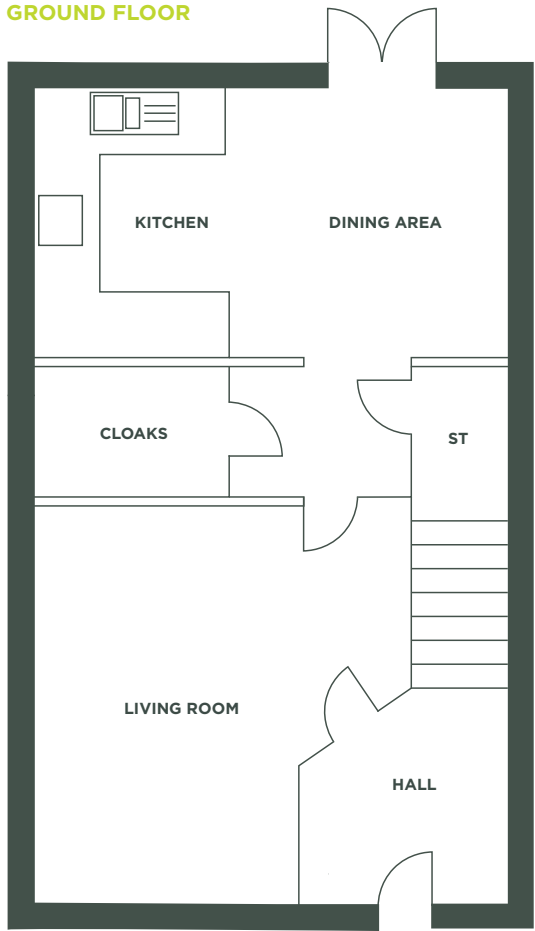


THE FLOOR PLANS

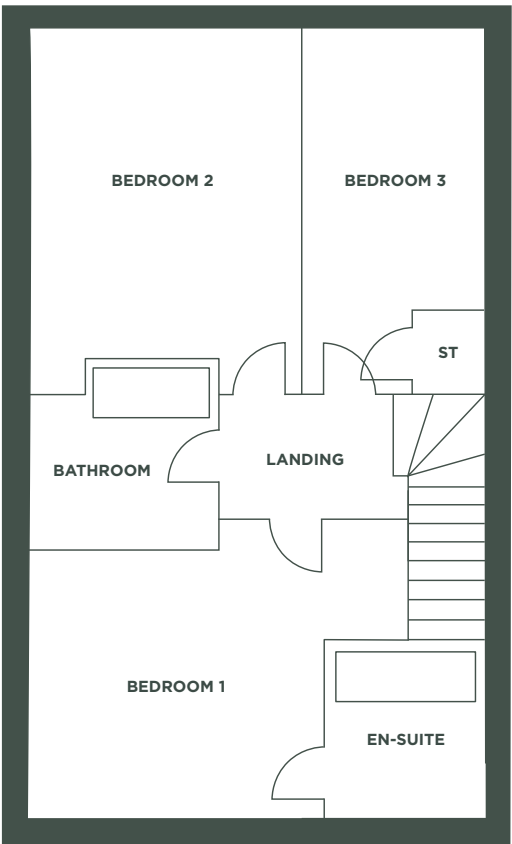
The Hazel

Shared Ownership

GROUND FLOOR



FIRST FLOOR



GROUND FLOOR

Kitchen / Dining Room	5.19m x 2.99m	17' 0" x 9' 10"
Living Room	4.17m x 3.66m	13' 8" x 12' 0"

FIRST FLOOR

Bedroom 1	3.54m x 3.29m	11' 7" x 10' 9"
Bedroom 2	2.95m x 2.72m	9' 8" x 8' 11"
Bedroom 3	3.48m x 2.15m	11' 5" x 7' 1"

*Computer generated images and floorplan have been produced for illustrative purposes only.
The dimensions have tolerances of + or -50mm and should not be used other than for general guidance. The floorplans shown are not to scale.

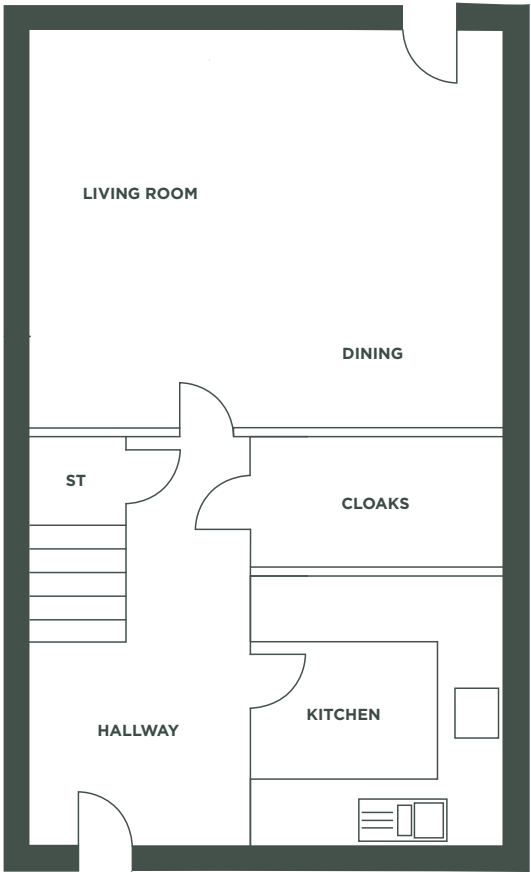


THE FLOOR PLANS

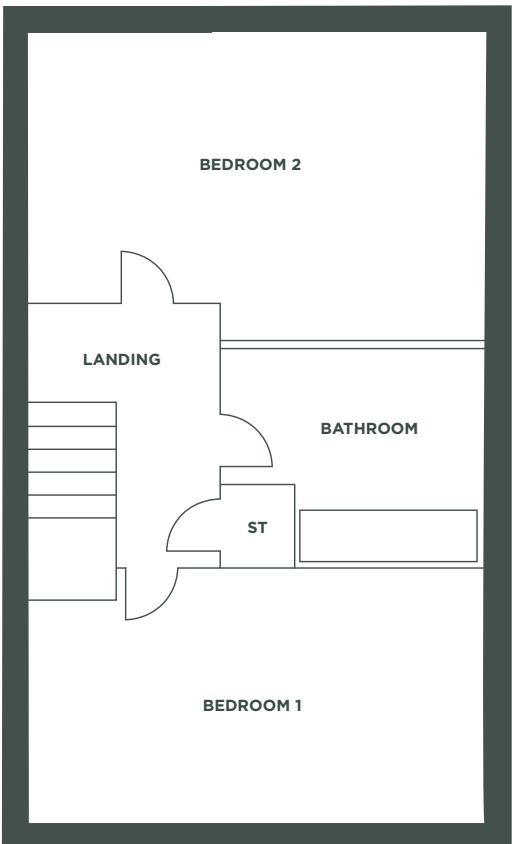
The Maple

Shared Ownership

GROUND FLOOR



FIRST FLOOR



GROUND FLOOR

Living / Dining Room	3.25m x 4.50m	10' 7" x 14' 8"
Kitchen	3.55m x 2.50m	11' 6" x 8' 2"

FIRST FLOOR

Bedroom 1	4.50m x 2.74m	14' 8" x 9' 0"
Bedroom 2	4.50m x 2.89m	14' 8" x 9' 5"

*Computer generated images and floorplan have been produced for illustrative purposes only. The dimensions have tolerances of + or -50mm and should not be used other than for general guidance. The floorplans shown are not to scale.

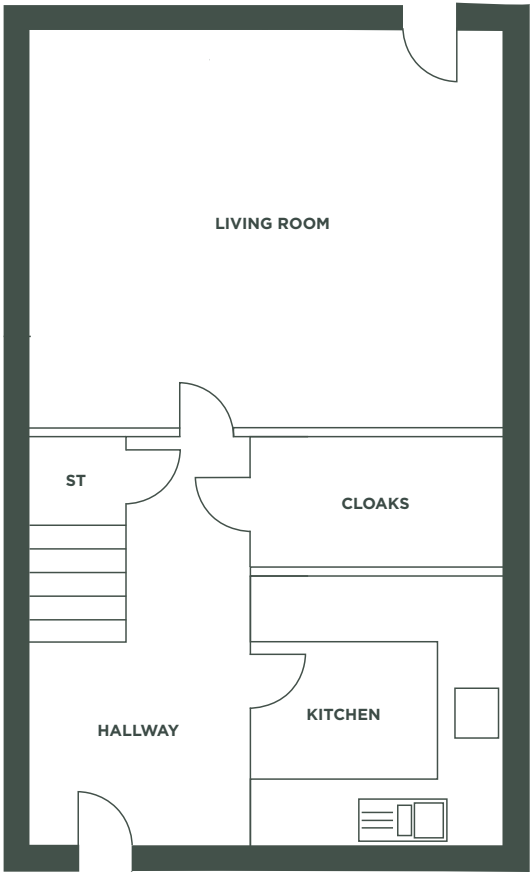


THE FLOOR PLANS

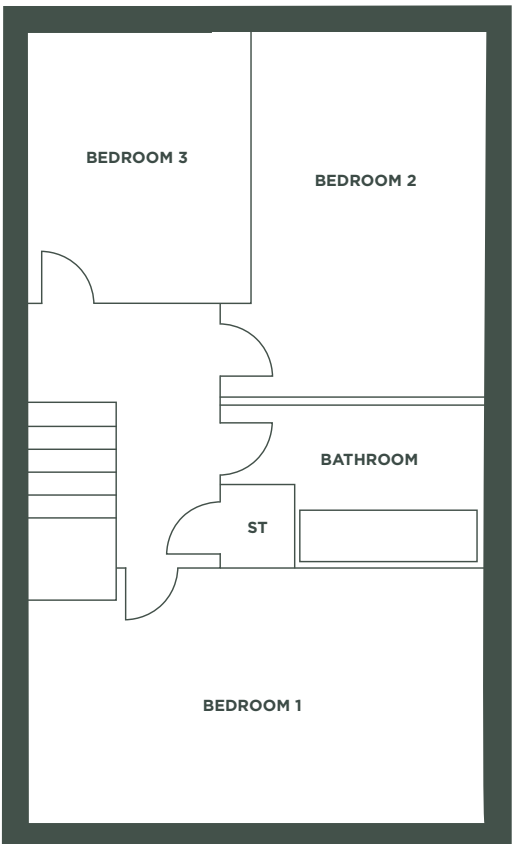
The Beech

Shared Ownership

GROUND FLOOR



FIRST FLOOR



GROUND FLOOR

Kitchen	2.52 x 2.96m	8' 3" x 9' 7"
Living Room	4.62m x 5.04m	15' 2" x 16' 5"

FIRST FLOOR

Bedroom 1	4.62m x 2.54m	15' 2" x 8' 3"
Bedroom 2	2.24m x 4.39m	7' 3" x 14' 4"
Bedroom 3	2.32m x 3.28m	7' 6" x 10' 8"

*Computer generated images and floorplan have been produced for illustrative purposes only. The dimensions have tolerances of + or -50mm and should not be used other than for general guidance. The floorplans shown are not to scale.



CERRIS
HOMES

that welcome home feeling

01782 854748 | cerrishomes.co.uk | e: newhomes@cerrishomes.co.uk | [f](#) [@](#) [in](#)

Cerris Homes, Kingsley, The Brampton, Newcastle-under-Lyme, Staffordshire, ST5 0QW

Cerris Homes is the trade name of Aspire Housing Limited, Kingsley, The Brampton, Newcastle-under-Lyme, Staffordshire ST5 0QW.
A registered society with the Financial Conduct Authority, Registration Number 31218R. Registered with the Regulator of Social Housing L4238.