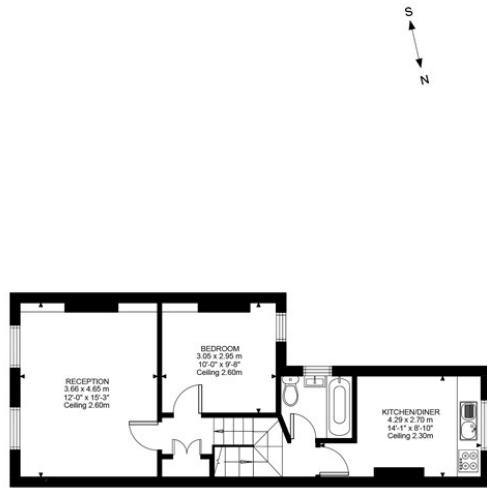




PCM

£1,800 PCM
Marmont Road
London, SE15 5TE

GARETH
JAMES



First Floor
506 ft²




Ground Floor
19 ft²

Marmont Road, SE15
Approximate Gross Internal Area
48.78 SQ.M / 525 SQ.FT

Illustration for identification purposes only. Not to scale.
Floor Plan Drawn According To RICS Guidelines.



Energy Efficiency Rating		Current	Potential
Very energy efficient - lower running costs			
(92 plus) A			
(81-91) B			
(69-80) C			
(55-68) D		68	75
(39-54) E			
(21-38) F			
(1-20) G			
Not energy efficient - higher running costs			
England & Wales		EU Directive 2002/91/EC	



Agents Note: Whilst every care has been taken to prepare these particulars, they are for guidance purposes only. All measurements are approximate and are for general guidance purposes only and whilst every care has been taken to ensure their accuracy, they should not be relied upon and potential buyers/tenants are advised to recheck the measurements

GARETH
JAMES

OFFICE ADDRESS
129 Bellenden Road
London
SE15 4QY

OFFICE DETAILS
02077324330
lettings@garethjames.com
<https://www.garethjames.com/>